



# VIII FINAL FANTASY®

**SQUARE ENIX™**

©2006 SQUARE ENIX CO., LTD. All Rights Reserved. CHARACTER DESIGN: Akihiko Yoshida. FINAL FANTASY, SQUARE ENIX, and the SQUARE ENIX logo are registered trademarks or trademarks of Square Enix Co., Ltd.



**SQUARE ENIX™**

**WARNING: READ BEFORE USING YOUR PLAYSTATION®2 COMPUTER ENTERTAINMENT SYSTEM.**

A very small percentage of individuals may experience epileptic seizures when exposed to certain light patterns or flashing lights. Exposure to certain patterns or backgrounds on a television screen or while playing video games, including games played on the PlayStation 2 console, may induce an epileptic seizure in these individuals. Certain conditions may induce previously undetected epileptic symptoms even in persons who have no history of prior seizures or epilepsy. If you, or anyone in your family, has an epileptic condition, consult your physician prior to playing. If you experience any of the following symptoms while playing a video game – dizziness, altered vision, eye or muscle twitches, loss of awareness, disorientation, any involuntary movement, or convulsions – IMMEDIATELY discontinue use and consult your physician before resuming play.

**WARNING TO OWNERS OF PROJECTION TELEVISIONS:**

Do not connect your PlayStation 2 console to a projection TV without first consulting the user manual for your projection TV, unless it is of the LCD type. Otherwise, it may permanently damage your TV screen.

**USE OF UNAUTHORIZED PRODUCT:**

The use of software or peripherals not authorized by Sony Computer Entertainment America may damage your console and/or invalidate your warranty. Only official or licensed peripherals should be used in the controller ports or memory card slots.

**HANDLING YOUR PLAYSTATION 2 FORMAT DISC:**

- This disc is intended for use only with PlayStation 2 consoles with the NTSC U/C designation.
- Do not bend it, crush it or submerge it in liquids.
- Do not leave it in direct sunlight or near a radiator or other source of heat.
- Be sure to take an occasional rest break during extended play.
- Keep this compact disc clean. Always hold the disc by the edges and keep it in its protective case when not in use. Clean the disc with a lint-free, soft, dry cloth, wiping in straight lines from center to outer edge. Never use solvents or abrasive cleaners.

Fill out this card and return it to be entered in our monthly drawing. You could win a cool game!

**REGISTRATION CARD - FINAL FANTASY® XII SLUS-20963**

FIRST NAME: \_\_\_\_\_ LAST NAME: \_\_\_\_\_

STREET ADDRESS: \_\_\_\_\_

CITY: \_\_\_\_\_ STATE: \_\_\_\_\_

PHONE NUMBER: ( ) \_\_\_\_\_ DAY  EVE  COUNTRY: \_\_\_\_\_

APARTMENT/SUITE NUMBER: \_\_\_\_\_

ZIP/POSTAL CODE: \_\_\_\_\_

MALE  FEMALE  AGE: \_\_\_\_\_

E-MAIL ADDRESS: \_\_\_\_\_

PARENT OR ADULT GUARDIAN (IF UNDER 18 YEARS OLD): \_\_\_\_\_

**CUSTOMER SUPPORT**

For customer support and technical support questions, please call (310) 846-0345 during the following hours of operation: Monday - Friday, 9:00 am - 6:00 pm, Pacific Standard Time.

No further purchase necessary. Each card qualifies for one monthly drawing. Two winners per month. Please fill in all information, or include all information on a 3x5 card and mail to: Square Enix, Inc., P.O. Box 6000, Clear Lake, MN 55319. One entry per person. Drawing to take place on or about the last day of each month. Winner will be notified by mail within 30 days of drawing. This contest void in Washington, Missouri, Florida, Ohio and other places where prohibited. Square Enix, Inc. reserves the right to determine the actual game, subject to availability. This contest may be terminated without notice. Sony Computer Entertainment America takes no responsibility for this offer.

**WHICH SQUARE ENIX™ GAMES DO YOU OWN?**

- |  |   |  |   |  |
|--|---|--|---|--|
| <input type="checkbox"/> FINAL FANTASY® VII                                      | <input type="checkbox"/> FINAL FANTASY TACTICS®                             | <input type="checkbox"/> SaGa Frontier®                            | <input type="checkbox"/> Parasite Eve®                                      | <input type="checkbox"/> Xenogears®        |
| <input type="checkbox"/> Brave Fencer® Musashi®                                  | <input type="checkbox"/> FINAL FANTASY® VIII                                | <input type="checkbox"/> FINAL FANTASY ANTHOLOGY®                  | <input type="checkbox"/> SaGa Frontier® 2                                   | <input type="checkbox"/> Front Mission® 3  |
| <input type="checkbox"/> Vagrant Story®  | <input type="checkbox"/> Legend of Mana®                                    | <input type="checkbox"/> Chrono Cross®                             | <input type="checkbox"/> Parasite Eve® 2                                    | <input type="checkbox"/> FINAL FANTASY® IX |
| <input type="checkbox"/> FINAL FANTASY CHRONICLES®                               | <input type="checkbox"/> FINAL FANTASY® X                                   | <input type="checkbox"/> Kingdom Hearts®                           | <input type="checkbox"/> FINAL FANTASY ORIGINS®                             | <input type="checkbox"/> UNLIMITED Saga®   |
| <input type="checkbox"/> FINAL FANTASY® X-2                                      | <input type="checkbox"/> Drakengard®  | <input type="checkbox"/> FRONT MISSION® 4                          | <input type="checkbox"/> STAR OCEAN® Till the End of Time™                  | <input type="checkbox"/> FINAL FANTASY® XI |
| <input type="checkbox"/> FINAL FANTASY® XI PC Version                            | <input type="checkbox"/> FINAL FANTASY® XI: CHAINS OF PROMATHIA®            | <input type="checkbox"/> KINGDOM HEARTS® 2                         | <input type="checkbox"/> FINAL FANTASY® XI: CHAINS OF PROMATHIA® PC Version |  |
| <input type="checkbox"/> FINAL FANTASY® XI: THE VANA'DIEL® COLLECTION PC Version | <input type="checkbox"/> KINGDOM HEARTS® CHAIN OF MEMORIES                  | <input type="checkbox"/> FULLMETAL ALCHEMIST® and the Broken Angel |   |  |
| <input type="checkbox"/> MUSASHI®: SAMURAI LEGEND™                               | <input type="checkbox"/> FULLMETAL ALCHEMIST® 2 Curse of the Crimson Elixir | <input type="checkbox"/> Radiata Stories™                          | <input type="checkbox"/> Romancing Saga™                                    |  |
| <input type="checkbox"/> Dragon Quest®VIII: Journey of the Cursed King™          | <input type="checkbox"/> Grandia®III  | <input type="checkbox"/> Kingdom Hearts® II                        | <input type="checkbox"/> VALKYRIE PROFILE®: LENNETH                         |  |
| <input type="checkbox"/> DIRGE OF CERBERUS™ -FINAL FANTASY® VII-                 | <input type="checkbox"/> DRAGON QUEST® HEROES: ROCKET SLIME™                |  | <input type="checkbox"/> VALKYRIE PROFILE® 2: SILMERIA                      |  |
| <input type="checkbox"/> DRAGON WARRIOR® I & II                                  | <input type="checkbox"/> DRAGON WARRIOR® III                                | <input type="checkbox"/> DRAGON WARRIOR® VII                       | <input type="checkbox"/> VALKYRIE PROFILE®                                  |  |
| <input type="checkbox"/> STAR OCEAN: THE SECOND STORY®                           | <input type="checkbox"/> GRANDIA® XTREME                                    |  | <input type="checkbox"/> GRANDIA®   |  |

- CHECK THIS BOX IF YOU DO NOT WISH TO BE CONTACTED BY SQUARE ENIX, INC.
- CHECK THIS BOX IF YOU DO NOT WISH TO BE CONTACTED BY SQUARE ENIX, INC.'S BUSINESS PARTNERS

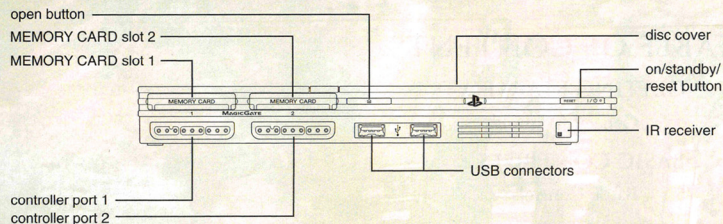
© 2006 SQUARE ENIX CO., LTD. All Rights Reserved.

Your limited warranty rights apply regardless of whether you submit this card.

For information and services by Square Enix, Inc., go to [www.square-enix.com](http://www.square-enix.com)



## GETTING STARTED



Set up your PlayStation®2 computer entertainment system according to the instructions supplied with your system. Check that the system is turned on (the on/standby indicator is green). Press the OPEN button to open the disc cover. Place the FINAL FANTASY® XII disc with the label side facing up in the disc holder, and then close the disc cover. Attach game controllers and other peripherals as appropriate. Follow the on-screen instructions and refer to this manual for information on using the software.

### MEMORY CARD (8MB)(FOR PLAYSTATION®2)

To save game settings and progress, insert a memory card (8MB)(for PlayStation®2) into MEMORY CARD slot 1 of your PlayStation®2 system. You can load saved game data from the same memory card or any memory card (8MB)(for PlayStation®2) containing previously saved games.

### GENERAL CONTROLS

ⓧ button	<ul style="list-style-type: none"> <li>Confirm a selection</li> <li>Talk with a nearby NPC (you can only talk with NPCs who have a talk icon displayed above them)</li> <li>Inspect an object (an action icon will appear above your head when you approach a sign, door, treasure chest, or other interactive object)</li> </ul>
○ button	<ul style="list-style-type: none"> <li>Cancel</li> <li>Return to the previous menu screen</li> </ul>
△ button	<ul style="list-style-type: none"> <li>Display the Party Menu</li> <li>Display the conversation log (a △ will appear in the log window when this option is available)</li> <li>Scroll quickly through lists in the Party Menu, etc. (when pressed in conjunction with the up/down directional buttons)</li> </ul>
□ button	<ul style="list-style-type: none"> <li>Talk with a nearby NPC (you can only talk with NPCs who have a talk icon displayed above them)</li> </ul>
↑ / ↓ buttons	<ul style="list-style-type: none"> <li>Move the menu cursor</li> </ul>
← / → buttons	<ul style="list-style-type: none"> <li>Target a foe or NPC</li> </ul>
left analog stick	<ul style="list-style-type: none"> <li>Walk (when slightly tilted)</li> <li>Run (when fully tilted)</li> </ul>
right analog stick	<ul style="list-style-type: none"> <li>Move camera</li> </ul>
L1 / R1 buttons	<ul style="list-style-type: none"> <li>Change pages</li> </ul>
L2 button	<ul style="list-style-type: none"> <li>Toggle zoom</li> </ul>
R2 button	<ul style="list-style-type: none"> <li>Zoom in and out of the map and license board</li> </ul>
Ⓞ button	<ul style="list-style-type: none"> <li>Return camera to default position behind character (this can also be done manually using the right analog stick)</li> </ul>
START button	<ul style="list-style-type: none"> <li>Pause the game</li> </ul>
SELECT button	<ul style="list-style-type: none"> <li>Display a map of your current location</li> </ul>

## NOTES



**TECHNICAL DIRECTOR**  
Hideyuki Kato

**MANAGER**  
Yukihiko Shibuya

## SQUARE ENIX, INC.

**QUALITY ASSURANCE MANAGER**  
David "Ribs" Carrillo

**ASSISTANT QA MANAGER**  
Mohammed A.C. Wright

**SENIOR QA COORDINATOR**  
Mathew Clift

**QA ASSOCIATES**  
Jason Sanders  
Glenn Lee

**QA COORDINATOR**  
Bryan D. Chen

**ASSISTANT COORDINATORS**  
Johnny Fournier  
Jeremy Goldsmith

**QA TEAM**  
Erik Carpenter  
Cris Y. Cheng  
Robert Dryburgh  
Darryl D. Duncan  
Lucas Goodman  
Darren S. Harvey  
Kevin Kim  
Eric Lea  
Noel Lynch  
Nick Madonna  
Scott Melzer  
Francisco Miranda  
Chintan Patel  
Joseph Pirante  
Thomas Rios  
Fredrick Sykes  
Noah Woo

**QA TRANSLATORS**  
Arthur T. Kawamoto  
Elijah Smolko

**LOCALIZATION & QA DIRECTOR**  
Yutaka Sano

**EXECUTIVE DIRECTOR OF COMMUNITY & SERVICE**  
Yasu Kurosawa

**SENIOR MANAGER OF OPERATIONS**  
Franko F. Fonseca

**INFORMATION CENTER MANAGER**  
Walter Brame

**GENERAL MANAGER**  
Koji Yamashita

**INFORMATION CENTER SUPERVISORS**  
Carl Hidalgo  
Sean Michael

**INFORMATION CENTER REPRESENTATIVES**  
Jereme Skelton  
Neil "Tak" Herrera

**PUBLIC RELATIONS**  
Sonia Im  
Charlie Sinhaseni  
Frederick K. Hashi

**PRODUCT MARKETING**  
Fernando Bustamante  
Felice V. Wu  
Philip Ser  
Issei Shimizu

**PROJECT COORDINATION**  
Kumiko Hakushi  
Naoko Yamamura-Rice  
Emi Maurer

**MARKETING COMMUNICATIONS**  
Patrick H. Cervantes  
Jonathan Cooperston  
Tim Law  
Wilbur Lin  
Parker Sapp

**SALES**  
Ron Kurtz  
Alaine C. de Leon  
Kanji Tashiro  
Traci Jones  
Shundea K. Brooks

**EXECUTIVE DIRECTOR, SALES & MARKETING**  
Shinji Futami

**SENIOR VICE PRESIDENT**  
Shinji Hashimoto

**VP, LEGAL AFFAIRS & GENERAL COUNSEL**  
Neal Black

**PRESIDENT & COO**  
Daishiro Okada

## SPECIAL THANKS

Mariko Suzuki (YOSHITAKA AMANO OFFICE)  
Yuki Someya (YOSHITAKA AMANO OFFICE)  
Kumiko Saeiki (Basiscapc CO.,LTD.)  
Shutaro Yokoyama  
Daisuke Tsumanuma  
Futoshi Katsuyama  
Nobuo Ito  
Naoto Uenaka  
Yusuke Matsui  
Madoka Tanaka  
Naoiko Yoshiyama  
Tetsuya Hiraoka  
Akira Kashiwagi  
Takashi Idogawa  
Kensuke Matsushita  
Masako Miyoshi  
Soushi Yoshida  
Izumi Tsukushi  
Hidemitsu Matsuzuka  
Miyako Kibe  
Kensuke Tanaka  
Kyoko Saito  
Kaori Shibayama  
Kenichi "Gustav" Iwao  
Hironobu Sakaguchi

ALL FINAL FANTASY XII STAFF  
ALL SQUARE ENIX STAFF

...and ALL FANS OF FINAL FANTASY

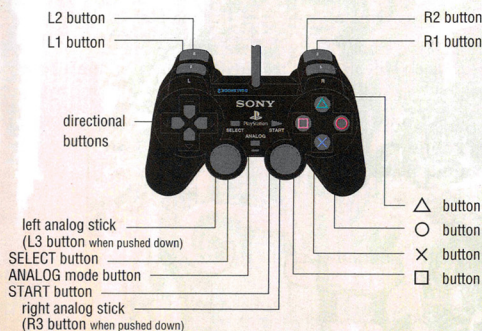


## EXECUTIVE PRODUCERS

Youichi Wada  
Akitoshi Kawazu

## BASIC CONTROLS

### DUALSHOCK™2 ANALOG CONTROLLER CONFIGURATIONS



## BATTLE CONTROLS

Please note that this game may be incompatible with controllers other than the DUALSHOCK®2 analog controller.

⊗ button	<ul style="list-style-type: none"> <li>• Display the Battle Menu</li> <li>• Inspect an object (an action icon will appear above your head when you approach a sign, door, treasure chest, or other interactive object)</li> </ul>
⊙ button	<ul style="list-style-type: none"> <li>• Cancel</li> <li>• Return to the previous menu screen</li> </ul>
△ button	<ul style="list-style-type: none"> <li>• Display the Party Menu</li> </ul>
⊕ button	<ul style="list-style-type: none"> <li>• Display/close the Battle Menu</li> </ul>
↑/↓ / ←/→ buttons	<ul style="list-style-type: none"> <li>• Move the menu cursor</li> </ul>
↑/↓ buttons	<ul style="list-style-type: none"> <li>• Change party leader (can only be used when the Battle Menu is not open)</li> </ul>
←/→ buttons	<ul style="list-style-type: none"> <li>• Target a foe, ally, or NPC</li> </ul>
left analog stick	<ul style="list-style-type: none"> <li>• Walk (when slightly tilted)</li> <li>• Run (when fully tilted)</li> </ul>
right analog stick	<ul style="list-style-type: none"> <li>• Move camera</li> </ul>
L1 / R1 buttons	<ul style="list-style-type: none"> <li>• Change target group (use to toggle between allies and foes when issuing battle commands)</li> </ul>
L2 button	<ul style="list-style-type: none"> <li>• Lock on to a target (while pressed down, the camera will center on the target the party leader is currently engaging)</li> </ul>
R2 button	<ul style="list-style-type: none"> <li>• Flee from battle (press this and run to attempt to escape from battle)</li> </ul>
R3 button	<ul style="list-style-type: none"> <li>• Return camera to default position behind party leader (this can also be done manually using the right analog stick)</li> </ul>
▶ button	<ul style="list-style-type: none"> <li>• Pause the game</li> </ul>
■ button	<ul style="list-style-type: none"> <li>• Display a map of your current location</li> </ul>

During play, the controller always remains in analog mode, as indicated by the illuminated red LED. The vibration function can be turned ON/OFF in the Config section of the Party Menu. The controller will only function when inserted into controller port 1.



## STARTING A GAME

After the game has been loaded in accordance with the instructions given on page 4 of this manual, a demo movie will play, after which the FINAL FANTASY XII title Screen will appear. Pressing the  $\otimes$  button during the demo movie will also call up the title screen. Select "New Game" if you wish to start FINAL FANTASY XII from the beginning. Select "Load Game" if you wish to continue playing from a previously saved game.

## ADJUSTING SETTINGS

When starting a new game, you will be given the option to adjust the config settings.

### • Controller Vibration

Toggle the DUALSHOCK®2 analog controller's vibration function ON/OFF.

### • Screen Shake

There are scenes during the game where the screen shakes. Use this setting to turn the effect ON/OFF.

### • Subtitles

Turn cut-scene subtitles ON/OFF.

### • Screen Size

Set the screen size to normal (4:3) or widescreen (16:9) aspect ratio.

### • Flicker Filter

Turn the screen flicker filter ON/OFF.

### • Sound

Change the game audio to monaural, stereo, or Dolby® Pro Logic II.

### • Screen Position

Adjust the horizontal and vertical position of the display using the directional buttons. A guide is also provided to help you adjust screen brightness.

### • Restore Defaults

Restore all settings to their default values.

The above settings can also be adjusted at any time from the Config section of the Party Menu. When you have finished adjusting the settings, select "Begin the Game" to start your adventure.

## SOUND SETTINGS

Adjusting the sound settings to match your audio environment will further enhance your gameplay experience.

### • Monaural

Suitable for audio/video equipment without stereo input/output.

### • Stereo

## US RECORDING

### RECORDING ENGINEERS STUDIOPOLIS

Eric Lewis  
Ernie Sheesley  
Kirk Rogers

### ASSISTANT RECORDING ENGINEER

Joe Moeller  
TECHNICAL SUPERVISOR  
Denny Densmore

### DIALOGUE EDITOR

Terry Reiff

### ADR EDITORS

Eric Lewis  
Ernie Sheesley

### RECORDING STUDIO STUDIOPOLIS

STUDIO MANAGER  
Laura Lopez

### DIALOGUE EDITORIAL STUDIOPOLIS

PRODUCER  
Alexander O. Smith

### LINE PRODUCER

Michael Hack

### VOICE DIRECTOR/CASTING DIRECTOR

Jack Fletcher

## MOTION CAPTURE

### CASTING Masayuki Sugahara (BE MINE)

### ACTORS' PRODUCTION MANAGEMENT INFRAMINCE CO.,LTD.

J.CLIP  
KIDT CREW  
SARAH PROJECT  
WAKAKOMA Pro  
YUGO OFFICE  
ZENITH INC.

## CONTRACTORS

### CG MOVIE CREATION & SUPPORT CGCG Inc.

Ivan C  
Sareana Sun  
Tsai Shui-Wen  
Steven Tsai  
Marry Wu  
Tony Wang  
Ally Liu  
Cheng So-Young  
Huang Burning  
Yang Po-chin  
Yang Kuo-Wei  
Fish Hong  
Fionn Yen  
Wu Li-Ya  
Wang Yao-Cheng  
Chang Pi-Ching  
Chiang Chu-Tzu  
Hsiao Feng-Yi  
Cody Hsieh  
Tony Fang  
Eric Wang  
Afen Fang  
Lu Tung-Yuan  
Wang Cheng-Yang  
Su Mei-Yao  
Paggy Liou

### LINDA Inc. / Griot Inc.

Hiroyuki Hayashida  
Masashi Sakamoto  
Kanako Tani  
Jitsuhisa Shibata  
Yuetsu Murakami  
Mamoru Kushiro  
Yasunobu Arahori  
Takaharu Tobe  
Nobuaki Ebihara  
Yoshihiro Ozawa  
Masashi Fujiura  
Tomohiro Yonemichi

### Slicon Studio

Koji Matsumoto

### Digital Frontier Inc.

2D FIELD & GADGET  
DESIGN SUPPORT  
KUSANAGI Co., LTD.  
Nobuhito Sue  
Hideyoshi Narita  
Ayu Kawamoto  
Yoji Nakaza

### MUSIC PRODUCTION Basiscape CO.,LTD.

## PROJECT MANAGEMENT

### LEAD PRODUCTION COORDINATOR

Hiroaki Kato

### PRODUCTION COORDINATOR

Hiroyuki Ogawa

### PRODUCTION ASSISTANTS

Yuko Fujii  
Emiko Nishiyama

## LOCALIZATION

### GENERAL MANAGER

Masashi Hiramatsu

### LOCALIZATION DIRECTORS

Satoko Kondo  
Tomoko Kondo

### LOCALIZATION COORDINATORS

Seiko Braswell  
Satoshi Toyoda

## PUBLICITY

### PUBLICITY PRODUCER

Yuka Naito

### PUBLICITY STAFF

Ayako Kawamoto  
Emiko Sato

### LOCALIZATION SUPERVISOR

Kazuyoshi Tashiro

### TRANSLATORS

Alexander O. Smith  
Joseph Reeder

### EDITOR

Morgan Morris Rushton

### PUBLICITY ASSISTANT

Shiho Tsuyuki  
Hiroyuki Toyama

### GENERAL PRODUCER

Koji Taguchi

## TECHNICAL SUPPORT

### MANAGERS

Shin Yamamoto  
Takayuki Komine

### ENGINEERS

Shingo Niwano  
Yasushi Shimizu  
Takayuki Arai

### COORDINATOR

Junko Kuroda

## LINE COORDINATORS

### MANAGER

Ken Narita

### STAFF

Takako Yamashita  
Miyuki Miyazaki  
Nobuyuki Kashihara

## LEGAL & INTELLECTUAL PROPERTY

### GENERAL MANAGER

Yasuhiko Hasegawa

### STAFF

Takahiro Fujii  
Hiroshi Harada  
Ayako Hino

## RATINGS

### RATINGS ADVISORS

Reiko Kondo  
Sueko Kogai

## QUALITY ASSURANCE

### COORDINATOR

Kiminori Ohya

### ASSISTANT COORDINATORS

Takafumi Matsui  
Kentaro Hayashi

### TECHNICAL ENGINEERS

Kazuya Okamoto  
Hisato Iwatsuki

### TECHNICAL ASSISTANT

Yusuke Sadamasa

### TESTERS

Yoshito Nabeshima  
Yusuke Kitamura  
Kazuki Yasuda  
Hidefumi Sakama  
Kengo Murata  
Mitsugu Kobayashi  
Susumu Kurihara  
Masaki Nakamura

### Ryouta Minami

Shintaro Gunji  
Noriyoshi Ohta  
Kenji Nishikawa  
Toru Saito  
Ai Sato  
Kentaro Noguchi  
Jun Okazaki  
Mei Ito  
Kousuke Sone  
Masaki Takatsu  
Takafumi Jakura  
Takaaki Hagiwara  
Tomomi Chigira  
Ellie Horiuchi  
Yuiki Mizuno  
Mao Fujimura  
Kunihiro Matsue  
Yuraro Nagatomo  
Daisuke Kobayashi  
Yasuhiro Yamada  
Kazumasa Oshida  
...and All QA Staff

## SET &amp; PROP DESIGNERS

Hiroto Ide  
Takayuki Hayashi  
Masumi Hakamada  
Eiji Kitada  
Takafumi Nishimura  
Sanae Nakanishi  
Seth Thompson  
Takuya Suzuki  
Taku Watanabe  
Tomohiko Osugi  
Keiji Sakamoto

## ANIMATION DESIGNERS

Yoko Abe  
Masayo Tateishi  
Satoshi Naito  
Kazuhiko Kosono  
Masahiro Nishimura  
Hikaru Murakami  
Atsushi Osako  
Tomomi Moriyasu

## MOTION CAPTURE DESIGNERS

Tomoya Suzuki  
Hiroko Masuda  
Hiroki Minami  
Keiko Imamura

## SOUND

ADDITIONAL COMPOSITION  
Hayato Matsuo  
Masaharu Iwata

## SYNTHESIZERS

Keiji Kawamori

## PROGRAMMER

Minoru Akao

## TOOL PROGRAMMER

Satoshi Akamatsu

## MOVIE SOUND EDITORS

Shojiro Nakaoka  
Makoto Ise

## SOUND EDITORS

Kenichi Mikoshiba  
Natsuko Sugiyama  
Kazuhiro Hosoe  
Rieko Shimura

## DIALOGUE EDITOR

Natsuko Sugiyama

## OPENING &amp; ENDING THEMES

COMPOSER  
Hitoshi Sakimoto

ORCHESTRAL ARRANGEMENT  
Hayato Matsuo

PRODUCER  
Yuji Saito

## VFX DESIGNERS

Shuntaro Furukawa  
Ayako Kuroda  
Yasuko Asakura  
Ren Kikuchi  
Soichi Shirakabe  
Kaoru Chikaoka  
Makoto Waragai

## CG ENGINEERS

Kotaro Beppu  
Keisuke Miyazaki  
Taku Wakisaka  
Hirofumi Kawai  
Genichi Kawada  
Hiroki Miyazaki  
Hironaka Sato  
Masashi Nakata  
Manabu Ishizaki

## VISUAL WORKS COORDINATORS

Hazuki Fujimoto  
Ryosuke Inagaki  
Saika Aoki  
Momo Nakabayashi  
Norimichi Kurosawa  
Atsuko Hashimoto  
Hisako Sakurai

## MOVIE PRODUCERS

Hiroshi Kuwabara  
Satoshi Tsukamoto

## PROJECT MANAGER

Masayuki Tanaka

## PROJECT COORDINATOR

Masashi Kitagawa

## PROJECT ASSISTANT

Kazuki Hamamoto

## MIXING STUDIO

408 THX suite  
(THX pm3 certified)  
at Sony PCL Inc.

## MIXING ENGINEER

Kazutaka Someya

## ASSISTANT ENGINEERS

Yuka Kitazawa  
Asako Odajima  
Katsuhisa Sadayasu

## POST PRODUCTION MANAGER

Chiaki Ikejima

## DIRECTOR

Masaru

RECORDING ENGINEER  
Toshiyuki Yoshida

MUSICIAN COORDINATOR  
Toshiaki Ota

## PIANO

Masato Matsuda

## PERCUSSION

Midoriri Takada

## PERCUSSION

Tomoko Kusarai

## PERCUSSION

Marie Oishi

## TRUMPET

Kazuya Honma Group

## TROMBONE

Osamu Matsumoto Group

## HARP

Hiroyuki Minami Group

## TUBA

Kiyoshi Sato

## FLUTE

Takashi Asahi

## FLUTE

Yoshio Kizu

## "KISS ME GOOD-BYE"

(FEATURED IN FINAL FANTASY XII)

## COMPOSER/PRODUCER

Nobuo Uematsu

## VOCALS/PIANO/LYRICS

Angela Aki

## ARRANGEMENT

Kenichiro Fukui

## STRINGS

Gen-ittesu Group

## GUITAR

Mitsuhiro Ohta

## SYMPHONIC POEM "HOPE"

Taro Hakase  
Hitoshi Sakimoto  
Yuji Toriyama  
Katsumi Ohtani

## OBOE

Satoshi Shoji

## OBOE

Keiko Narita

## CLARINET

Tadashi Hoshino

## CLARINET

Satoshi Kobayashi

## BASSOON

Josuke Ohata

## STRINGS

Masatsugu Shinozaki Group

## HARP

Tomoyuki Asakawa

## CONDUCTOR

Koji Hatshima

## RECORDING STUDIO

Victor Studio

## COORDINATION

IMAGINE Inc.

## BASS

Akira Yamamoto

## DRUMS &amp; PERCUSSION

Isao Arima

## RECORDING &amp; MIXING

ENGINEER

Kenji Nakai

## RECORDING STUDIO

ONKIO HAUS / STUDIO 1043

Miho Kitagawa  
Robby Wada  
HATS UNLIMITED CO.,LTD.  
Ein Associates

## SUPPORTING CAST

RAMINAS  
Nick Jameson

ANASTASIS, DALAN  
Dwight Schultz

MIGELO, GILGAMESH  
John DiMaggio

GARIF GREAT-CHIEF  
Michael Chinyamurindi

VENAT  
Anita Carey

GERUN KING  
Bernice Stegers

BA'GAMNAN  
Steve Blum

KYTES  
Conner Demita

HAVHARO  
Chris Edgerly

ADDITIONAL VOICES  
John Demita  
Scott Menville

Jonathan Nichols  
Phil Proctor  
Jill Talley

## CG STUNT ACTORS

Mark "Cadogan" Iacampo  
Jay "Noc" Noyes

Keiichi "Stephan" Tada  
Yukie "Fox" Yamada

Suitable for audio/video equipment with 2-channel input/output.

## • Dolby® Pro Logic II

This game is presented in Dolby® Pro Logic II. To experience FINAL FANTASY XII in dynamic surround sound, connect your game console to a sound system with Dolby® Pro Logic (for 4 channel sound) or Dolby® Pro Logic II (for 5 channel sound) decoding.

Please refer to your sound system's instruction manual for further details.

Dolby, Pro Logic, and the double-D symbol are trademarks of Dolby Laboratories.

## SAVING AND LOADING

## • Saving

At least 100KB of space is required on a memory card (8MB)(for PlayStation®2) in order to save your game. Refer to page 15 on how to save your game while playing.

## • Loading

To continue playing from a previously saved game, select Load Game at the title screen and choose the MEMORY CARD slot that contains your data. After selecting the slot, your save file(s) will appear on the screen. Choose the one you wish to load and press the  $\otimes$  button.

Insert a memory card (8MB)(for PlayStation®2) into either MEMORY CARD slot to save or load data.

## EXITING A GAME

To end a game, press the START button to pause. While paused, pressing the  $\square$  button will return you to the title screen. Please note that exiting the game in this manner will not save your data. Make sure to save your progress before quitting.

## GAME OVER

When all of your characters have been KO'd or otherwise incapacitated, the game will end and return to the title screen. Select Load Game to resume play from your most recent save point.



## REALTIME RENDERING PROGRAMMING

**MAP RENDERING**  
Akihiro Yamaguchi

**CHARACTER MOTION**  
Naoki Hamaguchi

**CHARACTER MODEL**  
Daiki Hoshina

## ART DESIGN

Tonny WaiMan Koo  
Akiyoshi Masuda  
Takashi Honjo  
Shiho Tamura  
Airi Yoshioka  
Ryoma Ito  
Masateru Ikeda  
Kiyoshi Arai

**VISUAL EFFECTS**  
Yoshinori Tsuchida  
Daiki Hoshina  
Naoki Hamaguchi

**MENU**  
Shinichi Fujisawa  
Noriyasu Arata  
Mitsuru Nagai

Chikako Nakano  
Nao Ikeda  
Akiyoshi Kontani  
Yoshihiro Hirota  
Ayumi Namae  
Nobuya Aoki  
Kazunari Kajio

## STORYBOARD

Shinsaku Kozuma  
Kunihiko Noguchi

## 3D MAP & BACKGROUND DESIGN

Manabu Daishima  
Yukiko Sasaki  
Kazushi Urata  
Takato Ito  
Shinichi Mochizuki  
Hirokazu Takano  
Takeishi Sanda  
Hideaki Morita  
Daisuke Komatsu  
Kana Yamazaki  
Norifumi Nagaoaka  
Tsuoyoshi Okahisa  
Hiroyuki Sano  
Jun Sakurai  
Tatsuhiko Okamoto  
Hirotaki Mitsuhashi  
Shin Inaka  
Rei Fukuzawa  
Tsutomu Inagaki

Motohiro Murakami  
Takayuki Yoshikawa  
Rinosuke Kawai  
Yasunori Yanagawa  
Tohru Ohshira  
Daichi Nakagawa  
Yoshiyuki Shikano  
Masato Shida  
Kohji Takino  
Tsuoyoshi Wada  
Nabuyuki Suzuki  
Shinpei Murakami  
Takeshi Kawamorita  
Kohki Ishinuma  
Saeko Terada  
Yasuyuki Kawamata  
Mayumi Furuzawa  
Takeo Sasaki  
Subaru Ganbe

## REALTIME MODEL DESIGNERS

Eiichiro Nakatsu  
Shinya Senzaki  
Makoto Yagishita  
Yuji Mitsuishi  
Toru Shiozaki  
Nozomu Nishiiri  
Kazumichi Kimura  
Yoshinari Hirata  
Minako Tsuchiya

Noriaki Kayanuma  
Shohei Muta  
Takeshi Miyazawa  
Masahiko Mitsunami  
Rika Ojima  
Keiichiro Takahashi  
Mitsuharu Fushie  
Chiho Kawase  
Noriyuki Komoda

## TEXTURING

**LEAD TEXTURE DESIGNERS**  
Masaki Kazeno  
Kohji Machida  
Ryotaro Hashimoto  
Haruya Ishii  
Keiji Inoue  
Takuo Ueda  
Nobuyoshi Mihara

**TEXTURE DESIGNERS**  
Ikumi Hachiro  
Seiji Namase  
Nao Amanao  
Rie Koyama  
Yutaka Kasama  
Tatsuru Nakaza  
Masato Muramatsu  
Tomomi Fujino

## MOTION DESIGN

**PLAYER CHARACTER**  
**BATTLE MOTION**  
Tsunataro Yoshida  
Takahiro Sugita  
Yasuyuki Sogame  
Reiko Kitaichi  
Yuicé Wakamoto

**BATTLE MOTION**  
Satoru Uchida  
Ryo Hirao  
Daigo Nakamura  
Osamu Honma  
Tomohiro Naka  
Tadashi Soeda  
Jun Kusaka  
Mika Anzai  
Yoichiro Hori  
Ryuichi Onuma

**EVENT MOTION**  
Yasuhide Hino  
Mieko Saka  
Yu Segoe  
Masaki Imamura  
Kazuhiro Kimura  
Ryoma Araki  
Yukihide Kimura  
Hisashi Ohshio  
Yoshiaki Iizuka  
Takeshi Oda  
Toshiaki Watanabe  
Satomi Tsuchida  
Hiroko Miura

**EVENT MOTION & MOTION CAPTURE**  
Kaoru Minemoto  
Sei Ikeda  
Mitsuaki Sato

**FACIAL MOTION**  
Hanae Karasawa  
Tomoyuki Arai

## MENU DESIGN

**VISUAL DESIGN & LAYOUT**  
Satomi Hongo  
Takeshi Tateishi  
Yuka Miyamoto  
Koichi Ebe

**CHARACTER EFFECTS**  
Tajiri Tsuchiya  
Nobuki Ando

## VISUAL EFFECTS DESIGN

Noriko Ikeda  
Fumiko Hoshino  
Yuko Hatae

Mayumi Kubota  
Makoto Ohta  
Naoto Endo

## CG MOVIES

**CHARACTER MODEL SUPERVISORS**  
Akira Iwata  
Kimitoshi Tsumura

**EDITOR**  
Keiichi Kojima

**CHARACTER TECHNICAL SUPERVISORS**  
Akihiro Tsuchiya  
Tetsuhiro Kitagawa  
Mitsuharu Fukai

**SEQUENCE LEADS**  
Hiroyuki Honda  
Hirosi Fujiwara  
Takeshi Tateishi  
Kazuhiro Shimada

**SET & PROP SUPERVISORS**  
Hirosi Kamohara  
Kazuyuki Ikumori

**CROWD SIMULATION LEADS**  
Fred T.Y. Hui  
Kenichi Isaka

**ANIMATION SUPERVISORS**  
Koichiro Shiratori  
Hirotaka Sawada

**CHARACTER MODEL DESIGNERS**  
Mamoru Tagata  
Tadahiro Inoue  
Ken Yuasa  
Naomi Horigome  
Takashi Nakano  
Takeshi Maruyama  
Toshihide Funato  
Yuji Yamazaki

**MOTION CAPTURE SUPERVISOR**  
Junichi Hashiya

**VFX SUPERVISORS**  
Hideki Mizoguchi  
Koji Tanaka

**CHARACTER TECHNICAL DESIGNERS**  
Mio Tagiri  
Yoshihiro Ikuta  
Masahiro Hamada  
Yujiro Tada  
Jun Usui

**LIGHTING SUPERVISOR**  
Kaori Sato

**COMPOSITE SUPERVISOR**  
Yasuharu Yoshizawa



# CREDITS

## DIRECTORS

Hiroshi Minagawa  
Hiroyuki Ito (Game Design)

MAIN SYSTEM & EVENT PROGRAMMER DIRECTOR  
(NORTH AMERICAN VERSION)  
Takashi Katano

LEAD REALTIME RENDERING PROGRAMMER  
Yoshinori Tsuchida

PROGRAMMING SUPERVISOR  
Taku Murata

MAIN CHARACTER DESIGN & BACKGROUND DESIGN SUPERVISOR  
Akihiko Yoshida

ART DIRECTION  
Hideo Minaba  
Isamu Kamikokuryu

VISUAL DESIGN & CHARACTER TEXTURE SUPERVISOR  
Hiroshi Minagawa

VISUAL EFFECTS DIRECTOR  
Juro Mifune

BACKGROUND VISUAL EFFECTS  
Yoshinori Ogura

LEAD MOTION DESIGNER  
Takeo Suzuki

EVENT MOTION DESIGNER  
Hiroaki Saotome

HI-POLYGON FACIAL MODELS & TEXTURES  
Takahiro Matsutira

HI-POLYGON FACIAL MOTION  
Takeshi Sadohara

BATTLE SYSTEM DESIGN  
Kazutoyo Maehiro

EVENT DIRECTION  
Jun Akiyama

SCENARIO  
Daisuke Watanabe  
Miwa Shoda

LEAD IN-GAME EVENT DESIGNER  
Takeshi Iwabuchi  
Masahiro Kataoka

LEAD MAP SYSTEM DESIGNER  
Kazuhiro Kataoka

LEAD MENU SYSTEM DESIGNER  
Yuichi Murasawa

SOUND EFFECTS DIRECTOR  
Tomohiro Yajima

MOVIE DIRECTION  
Eiji Fujii

IMAGE ILLUSTRATION  
Yoshitaka Amano

MUSIC PRODUCTION & COMPOSITION  
Hitoshi Sakimoto

STORY & CONCEPT  
Yasumi Matsumo

## CAST

VAAN  
Bobby Edner

PENELO  
Cat Taber

BALTHIER  
Gideon Emery

FRAN  
Nicole Fantl

ASHE  
Kari Wahlgren

BASCH  
Keith Ferguson

VAYNE  
Elijah Alexander

LARSA  
Johnny McKeown

GABRANTH  
Michael Rodgers

CID  
John Lee

AI-CID  
David Rasner

REDDAS  
Phil LaMarr

## MOTION ACTORS

VAAN  
Kouhei Takeda

PENELO  
Yuna Mikuni

BALTHIER  
Sean Ryan

## GAME DESIGN

IN-GAME EVENT DESIGN  
Mizue Tanaka  
Yusuke Matsuda  
Minoru Miura

CUT SCENE EVENTS  
Hidehiro Tanba  
Yuichi Nakamura  
Yaeko Sato  
Ryoko Kato  
Sayako Ohno  
Yusuke Kodama  
Shota Shimoda  
Masaru Taniguchi  
Rie Suzuki

## SYSTEM PROGRAMMING

BATTLE  
Takashi Isowaki  
Noritsugu Mochizuki

REALTIME CAMERA  
Satoshi Ogata

CG TOOL SUPPORT  
Atsushi Ebisawa

ONDORÉ  
Tom Kane

VOSSLER  
Nolan North

RASLER  
Andrew Philpot

REKS  
Yuri Lowenthal

EMPEROR GRAMIS  
Roger L. Jackson

GHIS  
Mark Wing-Davey

BERGAN  
Gary Martin

DRACE  
Julia Fletcher

ZARGABAATH  
Simon Templeman

JOTE  
Michelle Arthur

MJRN  
April Stewart

FRAN  
Hiroko Harada

ASHE  
Mei Yoshikawa

BASCH  
Makoto Onaga

DIIALOGUE  
Kyoko Kitahara

BATTLE SYSTEM  
Hiroshi Tomomatsu  
Genki Yamashita  
Kazuyuki Miura

MAP SYSTEM  
Motoharu Tanaka  
Takanaki Hirose  
Naomi Fukui

DEVELOPMENT TOOLS  
Satoshi Ogata  
Noritsugu Mochizuki

DATABASE TECHNICAL SUPPORT  
Kenichi Matsudo

## A WORLD CALLED IVALICE...

AN AGE WHEN MAGICK WAS COMMONPLACE  
AND AIRSHIPS PLIED THE SKIES...

## OUR TALE BEGINS.

As war looms on the horizon, the mighty Archadian Empire begins a campaign to subjugate its neighbors. The small kingdom of Dalmasca shares their fate.

Two years after its fall, in the capital city of Rabanastre, the people line the streets to wait for the appointment of the new consul from Archadia.

To Vaan, a young man living on the streets of Rabanastre, the Empire is a hated enemy who took the life of his brother, the only family he had left. Vaan hatches a plot to break into the palace and take back the spoils of conquest from Dalmasca's occupiers.

He gets more than he bargained for when he meets Princess Ashe, the sole surviving heir to the Dalmascan throne, thought dead since the war.

Our story follows Ashe, Vaan and his friend Penelo, the sky pirate Balthier, and his partner Fran. Accompanying them is Basch, a captain of the Dalmascan army who turned traitor and slew his king.

Join them on an adventure spanning Ivalice that traces the mysteries behind the Archadian Empire's invasion.

**VAAN****HUME, 17 YEARS OLD**

*A boy who sees freedom in the skies.*

Living in the Rabanastre slums, Vaan maintains an air of hope even under the oppressive rule of the Empire. But he longs for more: a life without borders or authority. He dreams of becoming a sky pirate, free to go where he will.

**ASHE****HUME, 19 YEARS OLD**

*A princess who had lost everything.*

The only child of King Raminas and sole heir to the Dalmaskan throne, Ashe is believed dead following the invasion. She meets Vaan and the others under the most unlikely of circumstances.

Ashe knows all too well she lacks the power to right the wrongs committed against her and her kingdom, but she will not allow herself to admit defeat.

**BASCH****HUME, 36 YEARS OLD**

*A loyal knight branded as traitor.*

A captain in the Order of the Knights of Dalmasca, Basch achieved renown as a gallant and brave hero credited with countless victories on the battlefield. He is a man of justice who cannot abide inequity.

Unlike the other captains, who are chosen from the aristocracy, Basch is of common blood and enjoys the love of the people, until he inexplicably murders the King on the eve of a treaty-signing with Archadia. He is led away in chains.

What could drive so loyal a man to slay his oathsworn liege?

**Yamoor's Gambits**

Would you like to improve the efficiency of your party members' actions during battle? Then hurry over to Yamoor's Gambits and pick up a few specialized targets. Be sure to stop by when your travels bring you back to Rabanastre, as they are always updating their selection of reasonably priced merchandise.

**YOUR CLAN**

During your adventures, you will obtain a special item called a Clan Primer. This handy guide grants admission to the Clan Hall of Clan Centurio, allowing you access to prime information on hunts all across Ivalice.

**What are Hunts?**

In many towns and villages, you will happen upon large notice boards displaying "bills" requesting the capture, extermination, or exorcising of certain terrible beasts. After contacting the petitioners who post these bills, off you go on the hunt! If successful, they will often reward you with gil, weapons, armor, or other loot.

**Clan Centurio**

It is said that over one hundred clans exist across Ivalice. One of those operating out of Rabanastre is Clan Centurio, led by the eccentric moogler, Montblanc. You can visit the Clan Hall to learn of rare hunts available only to clan members, as well as obtain information on your clan rank and hunts you have accepted.

**Clan Rank**

Your rank within Clan Centurio rises as you defeat foes on your adventures and successfully complete hunts. When you achieve a new rank, you will be presented with a gift from the clan leader and be granted access to new items in the exclusive clan shop located in the Muthru Bazaar.

**Clan Primer**

The Clan Primer is a comprehensive record of your travels in Ivalice. It contains information on your accomplishments within the clan, as well as important information on hunts that you have accepted. It also contains a bestiary of foes you have defeated, and various adventuring hints.

## EXPLORING RABANASTRE

The following is information about Rabanastre, the town in which you begin your adventure. The locations below can all be found on your Location Map by pressing the SELECT button.

### RABANASTRE SHOPPING GUIDE

#### The Sandsea

Located in Rabanastre's bustling East End, the Sandsea has quenched parched throats and filled empty bellies for generations, earning itself a place in the heart of many a weary traveler. Adventurers from throughout Dalmasca journey here to view the notice board, where bills for the hunting of monsters, called "marks," are posted.

#### Panamis's Protectives

From thick metal armor that protects its wearers from the most powerful blows, to enchanted robes woven with mystical linens said to enhance a wearer's bond with the arcane, Panamis's Protectives guarantees the best selection of armor in the region. Stop by and check out their magick-resistant helms, gilt breastplates, and sturdy shields.

#### Amal's Weaponry

Stocking a wide variety of weapons for novice and master alike, Amal's Weaponry has a little something for everyone. To new adventurers, Amal recommends his selection of simple swords and daggers. To those who wish to keep their distance from the heat of battle, he suggests one of his fine ranged weapons. He even carries a few unique rods and staves for those who prefer something off the beaten path.

#### Migelo's Sundries

A successful adventurer is one who is prepared for anything, and prepared you will be after browsing through the extensive list of Migelo's wares. So whether you are a seasoned traveler or a fledgling newly flown, stop by Migelo's Sundries before setting off into the wild.

#### Batahn's Technicks

Do you find yourself constantly running out of MP in the middle of battles? Are you tired of bland, ordinary magicks? Then Batahn may have what you're looking for! Technicks are quick and easy to use, require no MP, and are, most of all, unique. Once you have saved up enough license points, stop by Batahn's and see if he can accommodate your needs.

#### Yugri's Magicks

MP gradually accumulate inside one's body through absorption of faint traces of Mist occurring naturally in the air. Don't let it go to waste! Powerful curative magicks to heal your companion's wounds, time magick capable of manipulating the flow of battle, deadly arcane magic to deal untold damage to your enemies – Yugri's stocks only the finest in tomes.

## PENELO

### HUME, 17 YEARS OLD

Vaan's friend.

Like Vaan, Penelo calls Rabanastre's Lowtown home. She watches over Vaan, trying to keep him from getting into too much trouble.

Though she lost her family in the war with the Empire, Penelo is ever cheerful, making her way by doing odd jobs in and around the city.

She enjoys the lighter side of life, but Penelo is not altogether unfamiliar with battle. While she remains untested in a true fight, her brothers, who belonged to the Order, taught her the fundamentals of combat.

Penelo believes that in perseverance, there is hope.

## BALTHIER

### HUME, 22 YEARS OLD

A dashing sky pirate.

He would describe himself as a noble thief, stealing only from those who deserve it. He goes where he pleases, swearing fealty to no one.

While roaming the skies of Ivalice with Fran, his viera partner, he still makes time to charm the ladies with his silver tongue and put wrongs to right—grinning all the while.

## FRAN

### VIERA, AGE UNKNOWN

A master of weapons.

A viera warrior, Fran is as much at ease with a sword as she is her bare hands. Her proficiency with a blade is matched only by her skill with a wrench, as she also handles the maintenance of Balthier's airship, the Strahl.

The lifespan of the viera is far greater than that of humes, and many secrets lie hidden in her long history. Yet, the divide of race does nothing to diminish the bond of trust between her and Balthier.

## EXPLORING IVALICE

Ivalice spans three main continents: Valendia, Ordalia, and Kerwon. Here is some advice to help you on your travels:

### BASIC MOVEMENT

Use the left analog stick to move your character. Tilt the stick slightly to walk, and fully to run.

### CAMERA MOVEMENT

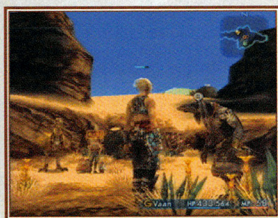
Use the right analog stick to rotate the camera around the party leader. Pressing the **R3** button will reset the camera directly behind the party leader. You can also lock and center the camera on the party leader's current target by holding down the **L2** button.

Adjusting the camera during battle allows you to confirm the positions of your other party members, as well as scan the surrounding area for foes. Using the camera to your advantage will assist you in heated battles with multiple targets.



### ACTION ICONS

When moving about an area, sometimes an exclamation mark (!) will appear over your character's head. This is called an "action icon." When this icon appears, it is an indicator that something important such as a door, switch, or treasure is nearby. When you approach the object, the action icon will change. Press the **X** or **○** button to interact with the object.



### TALK ICON

You can only speak with NPCs who have a talk icon above their heads. To begin a conversation, approach an NPC and press either the **X** or **○** button.

#### • Conversation Log

When a **△** appears in the log window, you can press the **△** button to review previous pages of text. Use the **△** and **X** buttons or the up/down directional buttons to change pages.

## LEARN ACTION RANGES!

As mentioned earlier, a weapon's attack range is determined by its category. While melee weapons such as daggers and swords have limited range, ranged weapons such as crossbows and guns can deal damage to distant or flying enemies. Only ranged weapons, magicks, and select technicks can be used to defeat these foes. Note that magicks and technicks also have varying ranges of effectiveness.

You can determine whether or not your party leader is close enough to a target to perform the desired action by checking the color of the target guide (arrow) stretching in front of him. If the arrow is yellow, the target is within range; if it is red, it is not. All other party members, regardless of active gambits, will automatically move within range of their targets.

## KEEP AN EYE ON YOUR STATUS!

Foes often possess attacks that cause harmful status effects. If left untreated, these effects could hamper a character's performance, or even knock one out of a battle.

AILMENT	DESCRIPTION	TREATMENT
Oil	Increases damage dealt by Fire magicks	• Handkerchief
Disease	Prevents recovery of HP	• Vaccine
Poison	Deadly toxin gradually deals damage over time	• Antidote
Sap	Gradually drains HP	• Regen
Stop	Prevents all movement or action	• Chronos Tear
Immobilize	Prevents movement	• Remedy*
Disable	Prevents action	• Remedy*
Stone/Petrify	Turns a character to stone when the count reaches 0	• Gold Needle
Doom	Automatically KO's a character when the count reaches 0	• Remedy*
Sleep	Prevents movement or action	• Alarm Clock
Confuse	The character cannot tell friend from foe and cannot take commands	• Smelling Salts
Blind	Lowers weapon accuracy	• Eye Drops
Silence	Prevents magick use	• Echo Herbs
Slow	Increases the amount of time needed to execute actions	• Haste

\*The healing properties of remedies can be improved by obtaining special licenses.

\*\*In addition to items, there are also magicks that remove some of the above status effects.

## TIPS

Below are a few pieces of advice to help you along on your adventure:

### USE LIBRA!

Obtainable on the license board, Libra is a technick that allows you to not only see the name of a foe when targeting it, but also its HP/max HP, level, and weaknesses. It also reveals the location of hidden traps. There are several different types of traps in dungeons and fields around Ivalice, most of which have detrimental effects. Libra is quite useful when trying to avoid these obstacles.

In addition to the technick, there are also accessories that give players the Libra status effect when equipped.

### CHECK NAME COLOR!

When none of your party members have Libra activated, you can still make an estimate of a target's strength by viewing the color of its name in the information window.

Blue	An easy target
Yellow	A tough target, but not impossible to defeat
Red	An incredibly tough target, far beyond your party's current level

### SELL YOUR LOOT!

Most monsters do not carry gil, so to earn money you must often sell items that you find during your travels. The majority of the loot that you find on foes cannot be used by your party, so after confirming that you do not require an item, sell it to one of the many shopkeepers peddling their wares across Ivalice.

Sometimes, after selling loot to a shop, new bazaar goods will become available for purchase. The contents of most bazaar goods remain a mystery until they are obtained, so there is some risk involved when buying. However, it is rumored that there are some rare objects that can only be obtained from the bazaar...

### CONSIDER EQUIPMENT BONUSES!

Many weapon and armor categories confer unique bonuses. For example, each category of weapon has a different attack range and some categories allow for a higher percentage of multiple attacks or higher parry rate. Armor, on the other hand, often offers various stat boosts and added effects. For example, certain equipment from the Mystic Armor category boosts magick-related attributes such as magick power or maximum MP. It is always wise to consider the strengths of a character when deciding which equipment and weapon licenses to obtain.

## VIEWING MAPS

There are three types of maps: the Minimap, the Location Map, and the World Map.

### MINIMAP

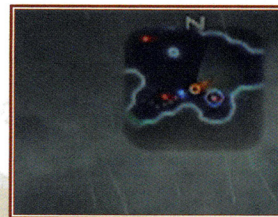
This small map appears in the upper right-hand corner of the screen and gives a simplified view of the immediate area surrounding your character.

#### • Reading the Minimap



Your current position. The red arrow points in the direction you are facing. The green cone indicates the direction of the camera.

BLUE DOTS	RED DOTS	GREEN DOTS
Party members	Foes	NPCs you can speak with




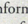
### LOCATION MAP

Whether traveling through an area or engaging in battle, pressing the SELECT button will call up the Location Map. The Location Map shows each zone within an area, as well as connections between zones, important locations such as shops, and occasionally your destination.

Location Maps can be purchased from Cartographers' Guild vendors or found inside ornate urns.

#### • Reading the Location Map


**CURRENT POSITION:** The flashing  indicates your current position. Zones that you have traveled through will appear light gray, while zones you have yet to explore will be a darker gray. If you have not found or purchased a Location Map, only places that you have walked through will be displayed.

**AREA INFORMATION:** Various icons on the map convey information about the selected area. Use the directional buttons to select different zones, and press the  button to bring up a list of important locations within that zone. When an item in the list is selected, the corresponding icon on the Location Map will flash.

**ZOOM:** Press the **L2** or **R2** button to zoom in and out.

The lines between zones on Location Maps represent the connections from one zone to another. These connections appear as dotted blue lines as you move through an area.

#### • World Map

Selecting "World Map" from the Party Menu will open a map of Ivalice. From this map you can confirm the locations of areas you have already visited or for which you have obtained maps. Select an area using the directional buttons and press the  button to view its Location Map.

## TRAVELING THE WORLD

There are several ways to make your way around Ivalice:

### AFOOT

Compared to other types of transportation, this one will require the most time. However, if your goal is gathering information or collecting treasure, walking through an area will reap the most rewards, especially if it is your first time there.



### CHOCOBOS

In several villages and towns across Ivalice you will find chocobo stables where, for a small fee, you can hire a chocobo for riding. Controlling a chocobo is similar to traveling afoot, though there are a few differences. A chocobo's speed is significantly higher than that of a character afoot, and you will not be attacked by monsters while riding. However, you will only be allowed to ride a chocobo for a limited amount of time. When that time

runs out, you will automatically dismount. After dismounting, nearby monsters may attack, so it is recommended that you keep an eye on the clock in the lower right of the screen when riding through dangerous areas.

Also, you can dismount at any time by pressing the **○** button. Note that once you have dismounted, you will not be able to remount, regardless of how much riding time remained prior to dismounting.

#### • Sprinting

Pressing **⊗** while riding a chocobo will give you an added boost of speed for a limited time. You can sprint up to three times.

In addition to hiring from the stables, there are other methods of obtaining a chocobo. However you come by one, you would do well to give these charming yellow birds a try as it is rumored that there are places only accessible to chocobos.

### AIRSHIPS

As the story progresses, you will have the opportunity to make use of the airships that connect various cities and towns across Ivalice. Not only are airships among the fastest methods of transportation, they also offer many other services as well, such as onboard shopping.

equipped weapon until the target has been defeated. There is no need to re-input the Attack command when the charge time gauge resets. If gambits are turned ON, a character will continue to execute the set commands as long as the gambit conditions are met.

### 6. Other Actions During Battle

Gambits can be overridden at any time by inputting commands from the Battle Menu. All of an ally's gambits can also be switched OFF from the same menu. However, please note that if the party leader is positioned too far away from other allies, tasks such as leader changes or battle command input may not be executable.

#### PARTY COMPOSITION

You can instantaneously change your party leader at any time by pressing the up/down directional buttons when the Battle Menu is not open. In the event your party leader is KO'd, gameplay will stop and you will be required to select a new leader before proceeding. If you have more than three characters available, you can call up reserve members using the Party command in the Party Menu.

#### • Fleeing

If you wish to cancel all commands and flee from battle or simply avoid confrontation with aggressive targets, pressing and holding down the **R2** button will cancel all current ally actions and prevent the execution of any further actions (including gambits) until the button is released.

Most foes only move and act within a limited area, their "territory." A foe will often chase you if you choose to flee battle; however, many give up when they reach a certain distance from their original positions.

Please note that while it is easier to avoid attacks while fleeing, you will still be vulnerable to them. Also, be careful when running, as you may stumble across other aggressive monsters in your path.

### 7. End of Battle

When all nearby targets have been defeated, the battle will conclude and the EXP/LP amount earned will appear above the fallen enemy. On occasion, enemies will drop items. Move your character over the item icon to pick it up and place it into your inventory.

#### • Battle Chains

Defeating the same type of foe in succession results in a "battle chain." The current chain count is briefly displayed in the lower right-hand corner of the screen immediately after you defeat a foe, and continues to rise until you defeat a different type of foe, enter a town, or touch a save or gate crystal. The higher the battle chain, the better chance your party will have of obtaining items after defeating a foe. In addition, there are several levels of battle chain, with higher levels improving drop rates, and increasing the chances of finding rare items, as well as adding beneficial effects, such as Cure, to the items when you pick them up.



## FLOW OF BATTLE

### 1. Finding a Foe

Foes with a red HP gauge are aggressive and will attack your party if they spot you. If possible, it is wise to check a target before engaging in battle. If you use the technick “Libra” or have an accessory with the Libra effect equipped, you will be able to view target information such as HP and level in the upper left-hand corner of the screen.

Enemies with a green HP gauge will not attack your party unless you attack first. However, the gauges of certain enemies have been known to change from green to red, even without violent provocation.

### 2. Selecting an Action

Pressing the  $\times$  or  $\square$  button will call up the Battle Menu. Here you can choose commands such as Attack or Magicks & Technicks to perform on selected targets. Use the left/right directional buttons to toggle between party members.

Characters who have their gambits turned ON will automatically carry out the actions assigned to them by their gambits without waiting for a battle command.



### 3. Selecting a Target

After selecting an action, a window will appear in the lower left-hand corner of the screen listing all nearby targets. At this point, a red ring will appear around the target currently selected from the list. When performing an action on party members, such as casting Cure, a blue ring will appear around the selected target. When a target has been selected, pressing the  $\times$  button will initiate the action.



### 4. Target Lines

When allies or enemies initiate actions, colored lines will appear, connecting them to their targets. These are known as “target lines.” Red target lines indicate enemy actions against allies. Blue lines indicate allies’ actions against enemies. Green lines indicate healing actions such as casting Cure or using potions.

### 5. Into the Fray!

After selecting an action, the “charge time gauge” displayed to the left of a character’s name will begin to fill. When the gauge is completely filled, the character will execute the action. Once Attack has been selected, a character will continue to automatically attack the target with his

## SAVE CRYSTALS

Located in towns, fields, and dungeons across Ivalice are large blue crystals known as “save crystals.” Pressing the  $\times$  button when near one will fully restore all party members’ HP and MP, remove harmful status ailments and revive any characters who have been KO’d. You will also be given the opportunity to save your game. By selecting “Save” you will be taken to the save screen. After selecting the appropriate MEMORY CARD slot, select the save file to which you wish to write your data.

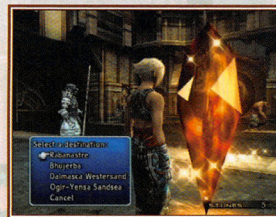


It is highly recommended you take care when overwriting save data. There will be instances where you will not be able to leave an area until completing a certain task. If you are not sure that your party can accomplish that task at their current levels or with the equipment they possess, it may be wise to save to a new file before entering the area rather than overwriting previous data.

## TELEPORTATION

During your travels you will often come across large orange crystals known as “gate crystals.” If you possess a “teleport stone” you can use it to instantly teleport to any other gate crystal you have touched in the past. Each teleportation will consume one teleport stone.

As with save crystals, gate crystals can also be used for saving your game and healing your party.

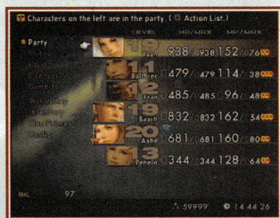


In addition to the methods listed above, there are also other modes of transportation unique to certain areas. Locating these will assist you on your journey.



## THE PARTY MENU

Pressing the **△** button while adventuring or in battle will call up the Party Menu. Many different tasks can be performed within this menu, such as viewing your characters' stats, equipping weapons and armor, and adjusting game settings.



### PARTY

Use this command to add and remove members from your current party. After selecting a character, use the **×** button or the left/right directional buttons to add or remove him from the party. Characters whose pictures are highlighted and offset to the left are members of the active party. A party can include up to three active members. The remaining reserve members can be called to action at any time using the Party command.

Note that while attempting to adjust party composition during battle, members who are targeted or performing an action cannot be removed from the party until they are no longer targeted or the corresponding action is complete.

#### • Guest Members

As you proceed through the game, there will be times when other characters temporarily join your party. While these “guests” are considered party members, they will act according to their own will. Guest members do not gain experience, cannot be given orders, cannot be removed from the party, and cannot have their equipment adjusted.



### STATUS

Use this option to view the current stats and status effects of your characters. Press the **LT** or **RT** buttons to cycle through characters.

## READING THE BATTLE SCREEN

- 1 Help message
- 2 Combat log/target info
- 3 Target line
- 4 HP gauge
- 5 Target guide
- 6 Battle Menu
- 7 Charge time gauge
- 8 Gambit status
- 9 Current/max HP Current MP



#### • Help Message

Information about the currently selected command.

#### • Combat Log/Target Info

Information about actions performed by allies and foes. When a foe is targeted, various information such as the target's name is displayed.

#### • Target Line

A line connecting a target with an ally or foe who is currently performing an action on that target. The color of the line varies with target and action type.

#### • HP Gauge

A simplified HP gauge showing a target's current hit points. The color of the gauge varies with the type of target.

#### • Target Guide

An arrow extending from the party leader indicating whether or not a target is within range. A yellow arrow indicates the character is within range to perform the selected action. A red arrow means that the character is too far from the target.

#### • Battle Menu

A list of battle commands called up by pressing the **×** button. Select a command with the up/down directional buttons. Toggle between allies with the left/right directional buttons. An ally's gambits can also be turned ON/OFF from this window.

#### • Charge Time Gauge

A gauge indicating how much time remains before a character will perform an action.

#### • Gambit Status

A stylized “G” is displayed when a character's gambits are turned ON.

#### • Current/Max HP Current MP

Current HP is displayed on the left, maximum on the right. Next to these numbers, the character's current (but not maximum) MP is also shown. Open the Party Menu to view the character's maximum MP.



## BATTLE

FINAL FANTASY XII is proud to introduce the revolutionary Active Dimension Battle (ADB) system, combining the ease of turn-based RPGs with the excitement of real-time action.

### THE BASICS

#### • Active Dimension Battle

The ADB system removes the transition between exploration and battle. No longer are battles fought in a closed environment. Now, whole areas are your battlefields. Terrain, party member location, and obstacles all influence how a battle is fought. Also, because you can see foes before engaging them, you have the opportunity to avoid unwanted conflicts.

Each type of monster has its own territory and behavioral patterns. Some foes will attack your party the moment they spot you, others will leave you alone unless provoked, while still others fight among themselves or prey on weaker monsters.

#### • Battle Commands & Gambits

When a battle begins, simply selecting the Attack command once for each character will order them to engage the specified target and continue fighting until the target has been defeated. It is not necessary to reselect the command after every hit. If you have gambits activated, your characters will automatically carry out those commands.

Remember that even if gambits are activated, those orders can be overridden at any time by issuing a command from the Battle Menu. Also, all of an ally's gambits can be switched ON/OFF from the same menu.

#### • Battle Modes

There are two battle modes available in FINAL FANTASY XII: Wait and Active. In Wait mode, the action is paused whenever the Battle Menu is open, allowing you to organize your strategies without having to worry about an enemy's relentless attacks. In Active mode, the action continues regardless of whether or not the Battle Menu is open. This mode is recommended for skilled players who seek thrilling, fast-paced confrontations.

The battle mode can be changed at any time from the Config screen found within the Party Menu.

Paying attention not only to a monster's attributes, but also to the terrain on which you fight, will help ensure victory when fighting powerful foes. The battlefield is always changing, and it is wise to adjust your gambits and strategy to meet the demands of the situation.

## STATS

LEVEL	The character's current level.
HP	The character's current/maximum hit points. If a character's HP reaches zero, the player is KO'd and unable to participate in battle. Max HP increases as a character gains levels or obtains certain licenses.
MP	The character's current/maximum Mist points. Mist points are required to cast spells. Max MP increases as a character gains levels.
LP	The number of license points a character currently has to spend on acquiring new licenses. Defeat foes to earn LP.
EXP/NEXT	The character's current number of experience points and the number of points needed to reach the next level. Defeat foes to earn EXP.
Attack Power	The character's attack power. The higher the number, the more physical damage the character is capable of dealing to an enemy. Attack power is based mainly on a character's weapon.
Defense	The character's defense rating. The higher the number, the less damage the character will take from physical attacks. Defense is based mainly on a character's armor.
Magick Resist	The character's resistance to magick. The higher the number, the less damage the character will take from magick-based attacks. Magick resist is based mainly on a character's helm.
Evade	The character's ability to evade physical attacks. The higher the number, the higher the probability an enemy's attack will miss or the character will successfully parry or block. Evade is based mainly on a character's shield.
Magick Evade	The character's ability to evade magick. The higher the number, the higher the probability an enemy's magick will not be effective on the character. Magick evade is based mainly on a character's shield.
Strength	Determines the power of most physical attacks. Strength increases as a character gains levels or obtains certain licenses.
Magick Power	Determines the potency of various magicks. Magick power increases as a character gains levels or obtains certain licenses. Magick power also affects the attack power of some weapons.
Vitality	Determines the character's resistance to various status ailments as well as the time required for recovery. Vitality increases as a character gains levels.
Speed	Determines the amount of time required to perform various actions. Speed also affects the attack power of some weapons.

There are some weapons, armor, and accessories that affect the above attributes when equipped.

Character development in FINAL FANTASY XII is based largely on the acquisition of "licenses." Licenses are required to equip weapons and armor, learn magicks and technicks, and enhance a character's abilities. For a detailed description of the license system, please refer to page 20.

## EQUIP

Use this command to change the equipment of your party members. You can manually remove or equip each character's weapon, off-hand item, helm, armor, and accessory, or choose "optimize" to automatically equip a character with the strongest equipment available.

To equip items manually, first select "Equip" from the menu. Next, select the type of item you wish to equip. When selecting weapons, you can cycle through weapon categories using the left/right directional buttons or the **L1/R1** buttons.

When a piece of equipment in the item list is highlighted, the item's effect on a character's attributes is displayed. A number in red indicates that the equipment will lower an attribute, while a number in blue indicates an increase.

Equipment listed in gray is either currently equipped by another character or cannot be equipped due to a lack of the proper license. View the chart on the far right of the screen to determine whether or not a character has acquired the license necessary to equip a certain item.



### • Reading the Equip Screen

- 1 Character whose equipment you have chosen to change
- 2 Character's current equipment
- 3 Change in attributes caused by equipping the selected item
- 4 List of items in your party's inventory
- 5 Chart indicating which characters can equip the selected item

Weapon	Equip one-handed, two-handed, and ranged weapons in this slot
Off-hand	Equip shields (when a one-handed weapon is equipped) or ammunition (when a ranged weapon is equipped) in this slot
Helm	Equip headgear to increase magick resist in this slot
Armor	Equip armor to increase defense in this slot
Accessory	Equip accessories with various effects in this slot

Weapons and armor are divided into a number of different categories, each having unique stats and attributes. Use LP to acquire licenses that best suit a character's strengths and weaknesses.

## SAMPLE GAMBITS

Gambits can be used to speed up or improve the efficiency of battles, as well as give you an advantage in heated situations. Below are a few examples of gambits that may help you in your adventures:

### TARGETS

**ON** Ally: HP < 70% **Cure**

Along with targets for individual characters or enemies, there are also specialized targets for certain situations. Using the target best suited to your current situation will ensure maximum effectiveness.

The gambit above will cause the character to cast Cure on any party member whose HP has fallen below 70% of its maximum. The character will not carry out this command unless the conditions are met, allowing you to concentrate on other aspects of the battle without worrying about everyone's HP.

In addition to HP-related targets, there are also MP-related and status-related ones, as well as targets that exploit foes' weaknesses (e.g. Foe: earth-vulnerable).



### ACTIONS

**ON** Foe: flying **1000 Needles**

In addition to Attack and Magicks, Technicks and Items can also be set as actions. By combining proper actions and targets, you can build gambits that will make the best use of your items and MP, or deal the most damage to your foes. The example above will initiate the ranged technick, "1000 Needles," when the character is confronted by a flying enemy (an enemy that cannot be attacked with melee weapons). Preparing gambits for several situations can help increase the overall pace of the game while maximizing an individual character's potential.



### PRIORITIZATION

**ON** Foe: party leader's target **Attack**

**ON** Ally: HP < 40% **Cure**

The order of gambits in the gambit list also represents their priority. A character will never execute a gambit lower in the list as long as the conditions for a higher one are met. Likewise, if conditions for a gambit high on the list are not met, the next gambit down is given priority. The example above has the character attacking the same target as the party leader, and then casting Cure on an ally with less than 40% HP. However, as long as the leader has a target, the character will never cast the spell. In this case, the character will only cast Cure when the leader's target has been defeated. To ensure that the character casts Cure during a battle, you would have to move the Cure gambit above the Attack gambit.

## CONFIGURING A GAMBIT

1. First, select a target from the categorized list that appears on the left.

2. There are many categories to choose from, some catering to fairly specific situations. These consist of party-specific (e.g. Ally: Penelo), HP/MP-specific (e.g. Ally: MP < 70%), and status-specific (e.g. Ally: status = Slow) targets, in addition to many others. Adjusting targets to match the strengths and weaknesses of allies and foes will greatly benefit you on the battlefield.

3. After assigning a target, your next task will be to select the action to be performed on the target. Actions consist of commands like Attack and license-based abilities such as magicks and technicks. You can also assign the use of items in your inventory.

4. Chosen magicks and technicks will be performed according to the targets you have assigned. The same is true for items. However, such actions will only be initiated if you have the necessary MP or appropriate item in your inventory.

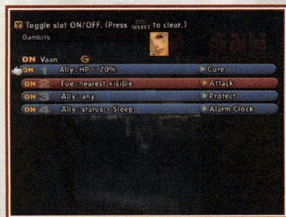
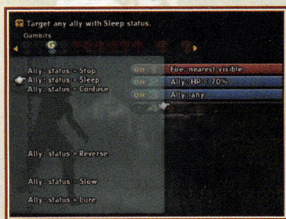
5. By highlighting a gambit and pressing the  $\otimes$  button once, you can adjust its position in the list with the up or down directional buttons. Press  $\otimes$  again to confirm its new position. A gambit's position in the list determines its priority.

6. Gambits will activate in the order of their listed priority. As long as the conditions for a higher priority gambit are met, any gambits of lower priority will not be activated. If priority rankings are not set properly, certain gambits may

never activate. If you run into problems with gambits, try adjusting their priority.

7. You can turn a gambit ON/OFF by selecting it and pressing the  $\otimes$  button twice. When OFF, the gambit will be displayed in dark gray. Turn off individual gambits when you feel their effects may be detrimental to a battle's progress. Turn off all gambits when you wish to proceed without engaging in any battles at all.

Remember that gambit actions can be overridden at any time by issuing a command from the Battle Menu.



## Action List

When selecting a character in the Party Menu, pressing the  $\odot$  button calls up that character's action list. The action list displays the magicks, technicks, Espers, and quickenings the character has obtained. Magicks, etc., listed in gray have yet to be learned. Press the  $\otimes$  or  $\odot$  button to advance through the list. Use the directional buttons to select and display a short summary of each action.

## LICENSES

Use this command to spend license points and obtain new licenses. Character development in FINAL FANTASY XII is based largely on the acquisition of "licenses." Licenses are required to equip weapons and armor, learn magicks and technicks, and enhance a character's abilities.

License points (LP) are earned along with experience points when you defeat an enemy. Refer to page 22 on how to use LP to obtain licenses.

## GAMBITS

Use this command to configure a character's gambits. Gambits are customizable commands that determine how a character will fight during battle. For more information on customizing and configuring gambits, please refer to page 24.

## WORLD MAP

Use this command to view the World Map, as well as any Location Maps you possess.

## INVENTORY

Use this command to view the items you have obtained.

## CLAN PRIMER

Use this option to view the Clan Primer, a comprehensive adventuring guide used by adventurers across Ivalice. Useful information such as hunt records, traveler's tips, and more can be found within its pages. You will obtain the Clan Primer after completing a certain task. Once you have received it, it is recommended that you check it often for hints on a variety of subjects.

## CONFIG

Use this command to adjust various battle and game settings.

When lists such as the weapons list contain too many items to display on one screen, you can use the  $\odot$  button in conjunction with the up/down directional buttons to quickly advance through the pages.

## LICENSES

Character development in FINAL FANTASY XII is based largely on the acquisition of “licenses.” Licenses are required to equip weapons and armor, learn magicks and technicks, and enhance a character’s abilities.

## THE BASICS

In addition to enabling a character to equip various items or cast potent magicks, there are also licenses to boost maximum HP or increase a character’s number of gambits. Licenses can be obtained on the “license board” by using “license points” (LP) earned when defeating foes. Each character has a license board; however, the layout of the board is the same for all characters.

Simply obtaining a license for a magick or technick does not automatically allow a character to use that ability. Before it can be used, the corresponding magick or technick must be purchased or found. Once you have acquired a magick or technick, any of your characters with the proper license will be able to use it.

Licenses for ability enhancements do not require any items and are effective immediately after being obtained.

## CHOOSING LICENSES

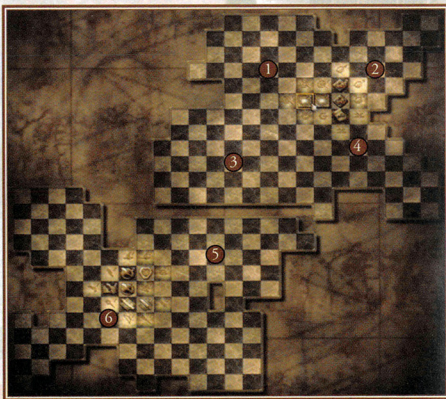
You are free to choose which licenses each character acquires. There are several categories of licenses, and using LP to obtain them will gradually open up new licenses on the same area of the board. These newly unlocked licenses will often be more powerful than previous ones and thus require more LP to acquire. To ensure smooth adventuring, you should focus character license acquisition on the areas in which you wish them to excel.

## LICENSE BOARD LAYOUT

The license board is loosely divided into six different areas:

- 1 Magicks
- 2 Accessories
- 3 Augments
- 4 Technicks
- 5 Armor
- 6 Weapons

If you wish to make a character skilled in magick, it would be wise to allot most points to licenses in category 1. On the other hand, if you prefer a character who excels in physical attacks, it would be better to focus on obtaining licenses in category 6.



## GAMBIT CONFIGURATION

Select “Gambits” from the Party Menu and select a character to open the gambit configuration screen.

### • Reading the Gambit Configuration Screen

- 1 Selected character
- 2 ON/OFF switch
- 3 Target
- 4 Action
- 5 Gambit slot



### • ON/OFF Switch

Switches all gambits ON/OFF. When switched ON, the character will automatically perform the assigned actions when the target conditions are met.

Even when gambits are switched ON, predefined actions can be overridden by manual commands from the Battle Menu. Gambits can also be switched ON/OFF directly from the Battle Menu.

### • Target

Assigns a target such as a party member or a foe. Gambit targets must be purchased or found.

### • Action

Assigns an action to be performed on a selected target. If a character has not obtained the corresponding license, the action will be displayed in gray.

### • Gambit Slot

A gray slot indicates a gambit that has been switched OFF, or has not been assigned a target and action. A blue slot indicates an action that involves an ally, while a red slot indicates an action that involves a foe.

## GAMBITS

Gambits are customizable commands that can direct characters to automatically perform certain tasks during battle or while adventuring.

### THE BASICS

Gambits consist of two different components, one being the “target” which represents the character/foe an action will be carried out on, and the other being the “action” to be performed on the selected target. Both must be assigned a condition before the gambit can be activated.

Assignable targets consist of party members and foes, as well as various specialized cases, for example “Ally: MP < 40%,” which targets allies with less than 40% of their maximum MP. These targets must be either purchased at a gambit shop or found in treasure chests. Once you have obtained a target, your whole party will be able to use it.

Assignable actions consist of commands such as Attack, Magicks, Technicks, and Items. With the exception of Attack, your party must have obtained a magick, item, etc. before you will be allowed to assign it as an action. An action will appear in each character’s gambit action list the moment it is obtained. However, it will remain unusable (in gray) until the character has obtained the corresponding license.

You can increase a character’s number of gambit slots by obtaining new ones from the license board.

There is no one way to configure your gambits. You should always build gambits that best suit the current situation. You can also turn ON/OFF each character’s gambits at any time. Sometimes it is wiser to turn off all gambits during a heated battle to prevent unnecessary actions that may be detrimental to your chances of victory.

## THE LICENSE BOARD

The license board can be displayed by selecting “Licenses” from the Party Menu and choosing a character.



- 1 Character name/available LP
- 2 License description
- 3 Licenses already obtained
- 4 Available licenses
- 5 Locked licenses

### • License Board

The layout of the board is the same for all characters.

### • Available LP

The current amount of LP the character has to spend on new licenses.

### • License Description

A description of the currently selected license.

### • Licenses Already Obtained

Licenses already obtained by a character are displayed in color.

### • Available Licenses

Licenses that have yet to be obtained by a character are displayed in light gray. The number in the lower left-hand corner of an available license is the amount of LP required to obtain it.

### • Locked Licenses

Detailed information regarding locked licenses remains hidden until an adjacent license has been obtained.

You can press the **L1** or **R1** buttons at any time to cycle through the license boards of each character.

## OBTAINING LICENSES

1. Open the board of the character for whom you wish to obtain licenses. Use the **LS1** and **RT** buttons to cycle through your party members.



2. On the board you can see which licenses the selected character has obtained so far. Use the directional buttons to select a license. A ★ mark in the license panel description indicates that it has already been obtained. Gray text indicates magicks, technicks, armor, weapons, etc. that have yet to be acquired.

3. Only those licenses adjacent to previously obtained licenses can be viewed and obtained. The number in the bottom left hand corner of each indicates the amount of LP required to obtain it. Select one of these licenses to view a detailed description.

4. Locked licenses cannot be obtained, regardless of how many LP a character may have. Selecting one will display the LP cost and the category of the license.



5. Obtaining a new license will unlock those adjacent to it. The more licenses unlocked in one direction, the more powerful the licenses will become. To learn potent magicks or equip powerful weapons, you typically must learn lesser licenses first.

The licenses you choose for your characters will directly affect their performance on the battlefield. Raising balanced characters is one path you may wish to take; however, raising six characters with individual strengths may make your adventuring easier. For example, why not create a paladin-type character who excels in swordsmanship as well as healing magic? Or how about a black mage, excelling at damage dealing, or a white mage specializing in mending your party's wounds? The possibilities are endless. Oftentimes, a balanced party of unique individuals can be much more effective than a party of average ones.

In addition to normal licenses, the board also hides licenses for Espers and special attacks known as “quickenings.”

Licenses for summoning Espers only appear on the license board after your party has defeated one. As with normal licenses, Esper licenses require LP to obtain; however, be aware that each Esper can only be obtained and summoned by a single character.

Quickenings are special attacks unique to each character in your party. Quickenings are hidden about the board and only appear when a nearby license has been obtained. The locations of all the quickening licenses are the same on all license boards, however, when a character learns a quickening, that license will be removed from all other characters' boards.

## MIST

When a character obtains an Esper or quickening license, the option “Mist” will be added to the Battle Menu. By using “Mist Charges,” the character will be able to summon Espers or perform quickenings, special attacks capable of dealing considerable damage to your foes.

### • Mist Charges

When a new Esper or quickening is obtained, a new MP gauge will be combined with the original one. This new gauge will possess the same maximum MP limit as the original. A character may obtain up to three of these gauges, called “Mist Charges.” Mist Charges are required when summoning an Esper or performing quickenings, with the number of Mist Charges required depending on the selected Esper or quickening's rank. Using a Mist Charge spends all the MP within a gauge.

### • Mist Chains

When a quickening is performed, the screen switches to quickening mode. While these attacks can be performed alone, chaining several together presents an opportunity to deal massive damage to a target.

At the bottom of the quickening mode screen, a timer and a list of available quickenings is displayed. By pressing the proper button combinations within the allotted time, you will be able to perform multiple attacks. The quicker you are able to input the combinations, the more time you will have left to perform the next. When the timer runs out, your Mist chain will end.

Pressing the **R2** button while in the quickening mode screen shuffles the quickening list. At times, a “charge” option will appear. Selecting this refills a Mist Charge, allowing continued use of quickenings.



## ESPERS AND QUICKENINGS