

REWRITE THE ROCKY SAGA,
PUNCH BY PUNCH

ROCKY

LEGENDS



PlayStation 2



UBISOFT

Ubisoft, Inc. - 625 Third St. - Third Floor - San Francisco, CA 94107

© 2004 Ubisoft Entertainment. All Rights Reserved. Ubisoft, ubi.com, and the Ubisoft logo are trademarks of Ubisoft Entertainment in the U.S. and/or other countries. "Rocky"™ - "Rocky V"™ & © 1976-2004 Metro-Goldwyn-Mayer Studios Inc. Developed by Venom Games Ltd. "PlayStation" and the "PS" Family logo are registered trademarks of Sony Computer Entertainment Inc. The ratings icon is a trademark of the Entertainment Software Association. Manufactured and printed in the U.S.A.



322153-MNL

FREE
2-DAY SHIPPING!

Buy online and avoid the lines with **FREE 2-day shipping** from the Ubisoft Store. Enter 2DAYFREE at checkout! Spend your time playing this game, while we deliver the next one, shipped FREE!

*To redeem this coupon, go to <http://store.ubi.com> and enter Coupon Code 2DAYFREE at checkout. Offer expires April 30, 2005. Offer applies to your next purchase at the Ubisoft Store. Products subject to availability. May not be combined with any other promotional offers or discounts, applied to previous orders, substituted, exchanged, sold, or redeemed for cash or other goods or services. Limit one per customer. Offer valid on orders with U.S. shipping destinations only. Offer only available at <http://store.ubi.com>. Sony Computer Entertainment America takes no responsibility for this offer.

APE ESCAPE: PUMPED & PRIMED



UBISOFT

WARNING: READ BEFORE USING YOUR PLAYSTATION®2 COMPUTER ENTERTAINMENT SYSTEM.

A very small percentage of individuals may experience epileptic seizures when exposed to certain light patterns or flashing lights. Exposure to certain patterns or backgrounds on a television screen or while playing video games, including games played on the PlayStation®2 console, may induce an epileptic seizure in these individuals. Certain conditions may induce previously undetected epileptic symptoms even in persons who have no history of prior seizures or epilepsy. If you, or anyone in your family, has an epileptic condition, consult your physician prior to playing. If you experience any of the following symptoms while playing a video game — dizziness, altered vision, eye or muscle twitches, loss of awareness, disorientation, any involuntary movement, or convulsions — **IMMEDIATELY** discontinue use and consult your physician before resuming play.

WARNING TO OWNERS OF PROJECTION TELEVISIONS:

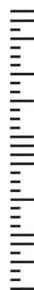
Do not connect your PlayStation®2 console to a projection TV without first consulting the user manual for your projection TV, unless it is of the LCD type. Otherwise, it may permanently damage your TV screen.

USE OF UNAUTHORIZED PRODUCT:

The use of software or peripherals not authorized by Sony Computer Entertainment America may damage your console and/or invalidate your warranty. Only official or licensed peripherals should be used in the controller ports or memory card slots.

HANDLING YOUR PLAYSTATION®2 FORMAT DISC:

- This disc is intended for use only with PlayStation®2 consoles with the NTSC U/C designation.
- Do not bend it, crush it or submerge it in liquids.
- Do not leave it in direct sunlight or near a radiator or other source of heat.
- Be sure to take an occasional rest break during extended play.
- Keep this compact disc clean. Always hold the disc by the edges and keep it in its protective case when not in use. Clean the disc with a lint-free, soft, dry cloth, wiping in straight lines from center to outer edge. Never use solvents or abrasive cleaners.



UBISOFT™

Leader Registrations Ubisoft
PO Box 67560
Albuquerque, NM 87193



TECHNICAL SUPPORT

Before contacting Ubisoft's Technical Support Department, please first read through this manual. Also browse through our FAQ listings or search the support database at our website, <http://support.ubi.com>. Here you will find the most recently updated information since the game's release.

Whenever you contact the Technical Support Department, please include the following information or have it available if you are calling:

- Full product title
- Game console you are using

Support Over the Internet

This is the best way to find answers to common issues with our games. Our Frequently Asked Questions list is available 24 hours a day, 7 days a week and contains the most up-to-date Technical Support information available. We update the Support pages on a daily basis, so please check here first for solutions to your problems: <http://support.ubi.com>.

Contact Us by Webmail

Due to high volumes of spam, viruses, and other non-support-related contacts, we no longer offer support via standard email. However, we do provide something better, webmail. By taking your questions directly through our website, we have completely eliminated all spam contacts. As a result, we are able to respond to your questions much more quickly than we could through standard email. To send us a webmail, simply log into our site at <http://support.ubi.com>.

From this site, you will be able to enter the Ubisoft Solution Center, where you can browse through our lists of Frequently Asked Questions (FAQ), search our database of known problems and solutions, and send in a request for personal assistance from a Technical Support representative by using the **Ask a Question** feature on the Frequently Asked Questions page. Most webmail contacts are responded to within two business days.

Contact Us by Phone

You can also contact us by phone by calling **(919) 460-9778** (for our customers in Quebec we provide French language support at (866) 824-6515). Please note that this number is for technical assistance only. No gameplay hints or tips are given over the Technical Support line. When calling our Technical Support line, please make sure you are in front of your gaming system and have all of the necessary information listed above at hand.

Be advised that our Technical Support representatives are available to help you **Monday through Friday from 9 am–9 pm Eastern Time** (French language support available from 7 am–4 pm EST).

While we do not charge for technical support, normal long distance charges apply. To avoid long distance charges, or to contact a support representative directly after these hours, please feel free to browse our Frequently Asked Questions lists or to send us a webmail. Webmail questions usually receive a response within two business days.

Contact Us by Standard Mail

If all else fails you can write to us at:

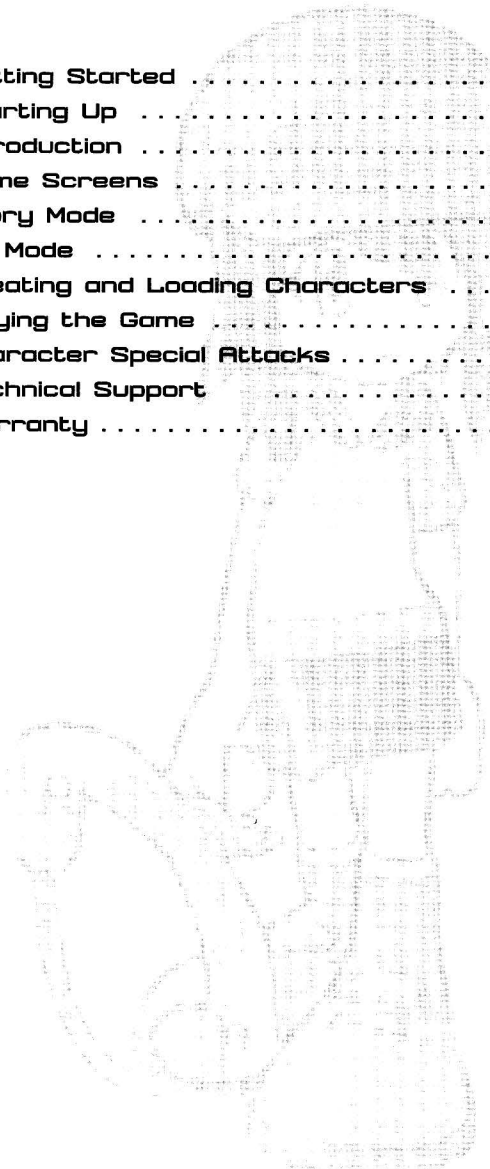
Ubisoft Technical Support • 3200 Gateway Centre Blvd. • Suite 100 • Morrisville, NC 27560

Return Policy

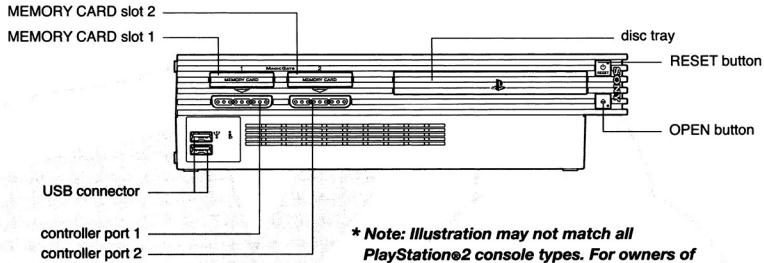
Please do not send any game returns directly to Ubisoft before contacting Technical Support. It is our policy that game returns must be dealt with by the retailer or online site where you purchased the product. If you have a damaged or scratched CD, please visit the FAQ listing for your game and get the latest replacement policy and pricing. We will not accept unsolicited returns/exchanges without prior approval and an RMA (Return Materials Authorization) number from a support representative.

TABLE OF CONTENTS

Getting Started	2
Starting Up	3
Introduction	4
Game Screens	7
Story Mode	8
VS Mode	12
Creating and Loading Characters	13
Playing the Game	16
Character Special Attacks	23
Technical Support	36
Warranty	inside back cover



GETTING STARTED



*** Note: Illustration may not match all PlayStation®2 console types. For owners of SCPH-70000 series PlayStation®2 systems, refer to the setup instructions supplied with your system.**

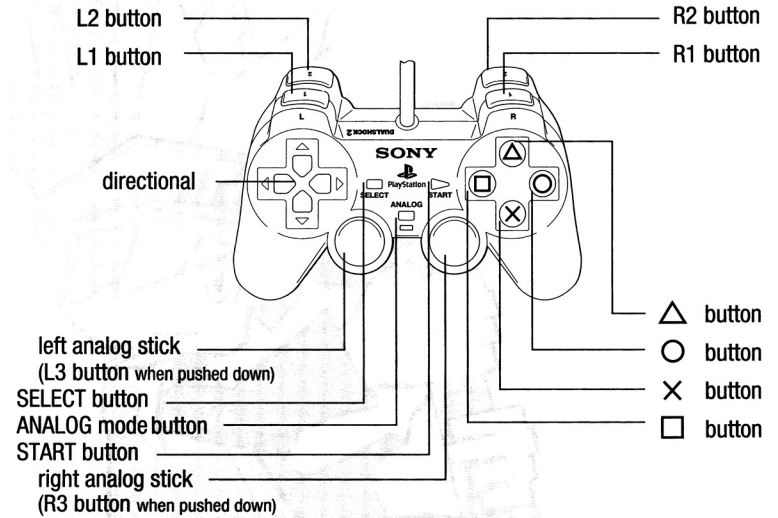
Set up your PlayStation®2 computer entertainment system according to the instructions in its Instruction Manual. Make sure the MAIN POWER switch (located on the back of the console) is turned ON. Press the RESET button. When the power indicator lights up, press the OPEN button and the display will open. Place the Ape Escape®: Pumped & Primed™ disc on the disc tray with the label side facing up. Press the OPEN button again and the disc tray will close. Attach game controllers and other peripherals, as appropriate. Follow on-screen instructions and refer to this manual for information on using the software.

Memory Card (8MB)(for PlayStation®2)

To save game settings and progress, insert a memory card (8MB)(for PlayStation®2) into MEMORY CARD slot 1 of your PlayStation®2 system. You can load saved game data from the same memory card or any memory card (8MB)(for PlayStation®2) containing previously saved games.

Notes:

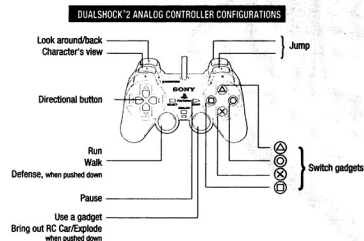
DUALSHOCK®2 ANALOG CONTROLLER CONFIGURATIONS



Basic Menu Controls

- Press the directional buttons to browse or cycle through the different options.
- Press the (X) button to select a button, go to the next screen, or change the current option.
- Within any submenu, press the (△) button to return to the previous screen.

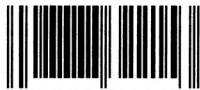
Gameplay Controls



These are the basic commands for the default controller configuration (controller setting 1). Transport gadgets have different controls. Please see the "Gadgets" section.

© 2004 Sony Computer Entertainment Inc. All Rights Reserved. Ape Escape is a registered trademark of Sony Computer Entertainment Inc. Pumped & Primed is a trademark of Sony Computer Entertainment Inc. Ubisoft and the Ubisoft logo are trademarks of Ubisoft Entertainment in the U.S. and/or other countries. The typefaces included herein are partially developed by DynaComware. The MPEG data in this software was made by TMPGenc. COPYRIGHT©Hiroiyuki Hori / Pegasys Inc., All Rights Reserved.

Ape Escape®:
Pumped & Primed™
 Proof of Purchase



0 08888-32215 3

INTRODUCTION

It's time for the High-Tech Tournament! Spike, the Professor, and their friends must battle evil monkeys to keep them from world domination. Get pumped and primed for crazy battles, wacky gadgets, and tricky moves. Let the tournament begin!

Characters



Spike

Spike once saved the Earth from the evil monkey Specter using a supply of gadgets. This is his first time entering the tournament, which he's joined along with the Professor and Natalie.



Professor

He's a scientist who has invented many gadgets including the Peak Point Helmet. He is Natalie's grandfather and a very good friend of Spike's.



Natalie

She is the Professor's granddaughter. She's very strong-minded and cheerful and always treats Spike like a kid.



Casi

Casi is the computer program the Professor created. She works as the Professor's assistant.



Specter

This monkey mistakenly wore a defective Peak Point Helmet and thus became evil. His ambition to control the Earth has been thwarted many times by Spike and his friends. This time, Specter will fight Spike and his friends to help the Pipo Monkeys win the tournament.



Jake

Jake is Spike's best friend. He's a nice, polite kid. However, his mind is now controlled by Specter, and he has become Spike's toughest rival.

Gadget Combo Attacks

Tron Gush: Dash Hoop + Stunclubs

Dark flames shoot out of the ground.

Tron Cannon: Dash Hoop + Slingshot

It throws a huge, dark ball at your target and does damage when it hits!

Darkness Stream: Dash Hoop + Dragonfly

It generates a tornado that sucks in everybody around you.

Dark Shout: Dash Hoop + RC Car

It makes everyone around you scream and drop what they're doing.

Transport Gadgets

Pochi (S Mode)

A well-balanced, stable boat.



Top Speed: 3

Acceleration power: 3

Endurance: 3

Handling: 3

Pochi (D Mode)

Its special attack can fire consecutive shots and do big damage if it succeeds. Be careful you don't run out of bullets!



Speed: 3

Endurance: 3

Attack power: 1

Consecutive shots: 5

Bullet guidance: 2

Bee Tron

This can fire lots of shots at once. Choose the perfect moment to use it.



Speed: 3

Endurance: 3

Attack power: 1

Consecutive shots: 5

Transport Gadgets

Floater Boat

Its speed is always stable and its handling ability is pretty good.



Top speed: 1
Acceleration power: 4
Endurance: 1
Handling: 4

WaterMech

Take advantage of the WaterMech's speed to zip up close to a target and unload on it with the three-bullet cannon.



Speed: 4
Endurance: 1
Attack power: 1
Consecutive shots: 5
Bullet guidance: 2

Trike Tank

Its endurance is low, but it's fast. Try to make consecutive hits while dodging your opponent's attack.



Speed: 4
Endurance: 1
Attack power: 1
Consecutive shots: 4



March On, Pipotron!

Members

Tron Red

He can strike really hard. Once he gets close enough to a target, he's untouchable!

Tron Blue

His attacks are balanced. His Dash Hoop is super high speed!

Tron Yellow

His projectile attack is very strong! You should keep your distance when he's attacking!



Pipo Monkeys

These monkeys became a little smarter by wearing the Peak Point Helmet the Professor invented. They are Specter's followers.



Team Monkey

These five Pipo Monkeys in different-colored pants will team up and participate in the tournament. Each monkey has a different specialty and together they aim for victory!



Pipotron

These three mysterious monkeys suddenly decided to participate in the tournament this time. It is rumored that they have something to do with a mysterious stranger...



Helga

She's only in elementary school, but she won the last tournament. She uses gadgets invented by her father, a scientist. It seems like she's on a more important mission this time...



Mystery Man

This mysterious stranger seems to be planning something bad behind the scenes. Will he make the tournament go in an unexpected direction?

Setting Up Multitap (for PlayStation®2)

To play the game with three to four people, you need a multitap (for PlayStation®2) and controllers for all players. Please connect your multitap (for PlayStation®2) to controller port 1.

Players should be assigned to the multitap (for PlayStation®2) controller ports as follows:

Controller port 1-A: Player 1 (1P)

Controller port 1-B: Player 2 (2P)

Controller port 1-C: Player 3 (3P)

Controller port 1-D: Player 4 (4P)

If you connect a multitap (for PlayStation®2) to the PlayStation®2 console during gameplay, you need to reinsert the memory card (8MB)(for PlayStation®2) from MEMORY CARD slot 1 into MEMORY CARD slot 1-A, and the memory card (8MB)(for PlayStation®2) from MEMORY CARD slot 2 into MEMORY CARD slot 1-B. Reinsert the memory card (8MB)(for PlayStation®2) from MEMORY CARD slot 3 into

MEMORY CARD slot 1-C, and the memory card (8MB)(for PlayStation®2) from MEMORY CARD slot 4 into MEMORY CARD slot 1-D.

When a multitap (for PlayStation®2) is used, controllers connected to controller port 2 won't work.

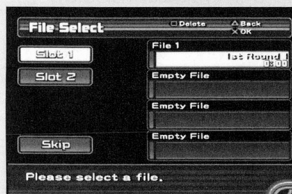
The mode indicator is always red. You can set the vibration by going to Vibration in the Options menu.

Loading and Saving Games

Loading Games



To load a game, insert a memory card (8MB)(for PlayStation®2) containing saved games into MEMORY CARD slot 1. You can then select the game you want to play from the File Select screen.



If this is your first time playing Ape Escape: Pumped & Primed, you'll need to create a new save file. To do this, insert a memory card (8MB)(for PlayStation®2) into MEMORY CARD slot 1 and select an empty progress profile. You need at least 125 KB of free space on your memory card (8MB)(for PlayStation®2) to save a new game.

If you create a new save file, you can start a new game from the beginning. If you select an existing file, you can continue your previous game. If you select Skip and start the game, the results won't be saved.

Saving Games

To be able to save a game, you must first insert a memory card (8MB)(for PlayStation®2) into MEMORY CARD slot 1. Your game will save automatically as you play. Just be sure to keep your memory card (8MB)(for PlayStation®2) in the same MEMORY CARD slot you chose when loading the game. Please be careful if you change the memory card (8MB)(for PlayStation®2) during gameplay. You will not be able to copy saves from one memory card (8MB)(for PlayStation®2) to another. If you are playing a game that is already saved on a memory card (8MB)(for PlayStation®2), you cannot resave it onto another memory card (8MB)(for PlayStation®2).

Monkey-marine

If Pipo Black uses this gadget, the speed of consecutive shots increases.



Speed: 3
Endurance: 3
Attack power: 3
Consecutive shots: 3
Bullet guidance: 2

Spec Tank

It has well-balanced features. Pipo Black handles this gadget very well.



Speed: 3
Endurance: 3
Attack power: 3
Consecutive shots: 3



Hit 'em Hard, Helga!
Special Attack Skills

Helga can launch consecutive attacks with her Stunclubs. Just keep hitting the right analog stick.

Gadget Combo Attacks

Sunshine Arrow: Slingshot + Stunclubs

It fires a strong, whirling arrow that does big damage when it hits.

Ripple Storm: Slingshot + Dragonfly

Jump up in the air and shower the ground with arrows.

Spin Shot: Slingshot + Dash Hoop

Fire arrows while spinning.

Homing Arrow: Slingshot + RC Car

Fire arrows that automatically chase the people around you.

Members

Pipo Red (angry eyes)

Hard puncher – and he can lay down a series of punches!

Pipo Black (sunglasses)

He can fire a machine gun five times in a row!

Pipo Green (goggles)

He can fly really high with the Dragonfly!

Pipo Blue (sad eyes)

He's a Dash Hoop professional!

Pipo Aqua (sad eyes)

He gets double points if he wins first place!

Gadget Combo Attacks

Goliath Eye: Stunclubs + Slingshot

A secret weapon; Goliath fires laser beams from his eyes.

Battleship Shoot: Stunclubs + Dragonfly

It fires lots of missiles from the sky.

Monkey UFO: Stunclubs + Dash Hoop

Ride on a UFO and fire light rays.

Goliath Hand: Stunclubs + RC Car

Goliath's fist falls from the sky.

Transport Gadgets

Swan Boat

It can go really fast but takes a long time to accelerate – be careful!



Top speed: 4

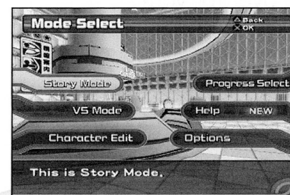
Acceleration power: 1

Endurance: 3

Handling: 3

GAME SCREENS

Mode Select Screen



The Mode Select screen appears after the File Select screen. From here you can select one of the following options:

Story Mode: Play through the game's storyline with up to two players.

VS Mode: Battle in VS mode with up to four players.

Character Edit: Create a character or change your character's name or equipment.

Progress Select: Change saved games or create new game files.

Help: Learn more about the game controls and rules.

Options: Change the game settings. From this menu, you can make the following adjustments:

- **Sound Output:** Output of music and sound effects. You can select stereo or mono sound.
- **Vibration:** You can turn the vibration function of the DUALSHOCK®2 analog controller on or off.
- **BGM Volume:** Music volume.
- **SE Volume:** Volume of sound effects.

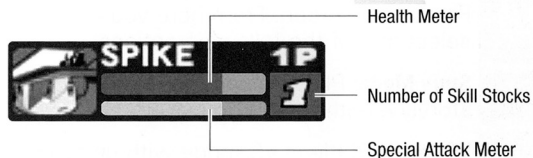
In-Game Interface

The in-game interface changes depending on what level you are playing and what gadgets you're using, so this sample screen doesn't show everything. But typically, here's where you look for info on your character's status, equipment, and collectable items.



Status Screen

"1P" to "4P" is displayed next to your character's name, and "COM" is displayed for computer characters. Keep an eye on your Health Points (HP). If they go down to zero, it's game over for you!



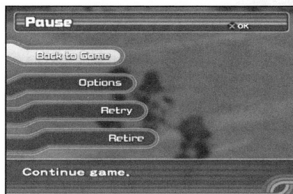
Split-Screen Play

When more than two players are playing together, the game screen gets divided up.



Pause Screen

If you press the START button during the game, the Pause menu will be displayed. Here you can make the following choices:



Back to Game: Return to your game.

Options: Change the game settings.

Retry: Restart the same level.

Retire: Quit the game and go back to the Tournament Select screen.

STORY MODE

The High-Tech Tournament

Battle to win the tournament! You need to pass all the levels in order from the first elimination round. If no players pass a level, everyone has to go back and start that level again.

Input Control: Dragonfly + Slingshot

It confuses other people's movement control.

Gravity Control: Dragonfly + Dash Hoop

It makes other people move slowly for a while.

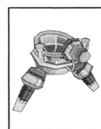
Time Control: Dragonfly + RC Car

It stops time and makes other people unable to move.

Transport Gadgets

Floating Saucer

As long as you can deal with its poor handling, it moves at a decent speed.



Top speed: 3

Acceleration power: 4

Endurance: 3

Handling: 1

Dive Capsule

Its bullets easily hit targets.



Speed: 3

Endurance: 2

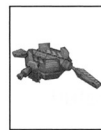
Attack power: 2

Consecutive shots: 1

Bullet guidance: 5

Blitz Ball

Its best feature is that it can hit a target somewhat easily. Since its endurance is pretty low, you have to handle this gadget wisely.

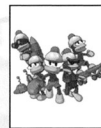


Speed: 3

Endurance: 2

Attack power: 2

Consecutive shots: 1



No Mercy, Team Monkey!

Different monkeys have different skills, so make sure you pick the right Team Monkey member for each level!

Transport Gadget

Jungle Raft

This raft has very high acceleration power! Even if you slow down a little bit, it can easily catch up.



Top Speed: 1
Acceleration power: 5
Endurance: 1
Handling: 3

Bana-marine

The Bana-marine's endurance is low, but it can dash out of reach of your rivals. It fires very accurately.



Speed: 4
Endurance: 1
Attack power: 2
Consecutive shots: 3
Bullet guidance: 4

Trolley Tank

Speed is the selling point of this gadget. Endurance is very low, so be careful not to take too many attacks.



Speed: 4
Endurance: 1
Attack power: 2
Consecutive shots: 3



Get Tricky, Casi!

Special Attack Skills

Casi's Stunclubs can fire a bullet like a Slingshot. Also, since she's nimble, she can make a threefold jump! She can easily jump over tall obstacles.

Gadget Combo Attacks

Gadget Control: Dragonfly + Stunclubs

It makes other people unable to use their gadgets for a while.

First round:

First half: four levels
Second half: four levels

Second round:

First half: four levels
Second half: four levels

Semifinals:

First half: three levels
Second half: three levels

Finals:

First half: three levels
Second half: three levels

Victory!

The first four levels in round 1 are Stunclubs 1, Dragonfly 1, Slingshots 1, and Boats 1. You get level points when you pass each level. Once you get the total number of points needed to pass the round, you can go to the next round!



Points Accumulated
Requirement Indicators

Character Select



1P and 2P can choose their characters from the Character Select screen.



Load Character: You can play with a character you created in the Character Edit screen. Please select a character to load.

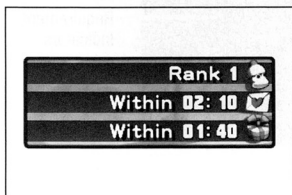
Trial Character: You can try out characters here, but you can't get fans or gifts.

When everybody is ready, press the START button and go on to the Tournament Select screen.

Tournament Select



Select the tournament you want to try from this screen.



Clear Points: Lists the total points you need to pass each tournament.

Retry: You can retry a tournament you have already played. For these tournaments, you can only pick one level from each tournament.

Information: Learn more about the fans and gifts available for each stage by scrolling to a stage name and pressing the button.

Tournament Title: View the requirements for winning each tournament. Please select Help to get details.



Start Game: This will take you to the Gadget Select screen.

Help: If this is your first time playing a tournament, go to the Help section to see the game controls.

Options: Change the game settings.

Retire: Quit the game and return to the Tournament Select screen.

Gadget Select



Before starting a level, be sure to check out the gadgets you can use!

Change Gadgets: You can change the gadgets assigned to the , , , and button. Just select the gadget you want to change and use the directional buttons to switch to a different gadget. If you select the gadget again, the new gadget will be equipped.

Iron Angler

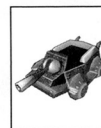
Attack power and endurance are very high, but since it's huge, it can't really dodge bullets. Be careful!



Speed: 2
Endurance: 5
Attack power: 5
Consecutive shots: 1
Bullet guidance: 4

Armored Cannon

It moves pretty slowly, but it has very high attack power!



Speed: 2
Endurance: 5
Attack power: 5
Consecutive shots: 1



Get 'Em, Pipo Monkeys!

Special Attack Skills

If you use the right analog stick as soon as you make a spin attack with the Stunclubs, you can do a somersault attack.

Gadget Combo Attacks

Monkey Bazooka: Stunclubs + Slingshot

It fires a Pipo monkey as a bullet. If it hits, it does damage!

Pipo Wave: Stunclubs + Dragonfly

A group of monkeys swarms and kicks everybody out.

Banana Rocket: Stunclubs + Dash Hoop

You can ride on a banana-shaped vehicle. If you ram into an opponent, the opponent takes damage!

Monkey Dance: Stunclubs + RC Car

A group of monkeys shows up from nowhere and attacks a target you throw a banana at.

Fly Tank

It moves fast, but since it's big, it can't dodge bullets well.



Speed: 5
Endurance: 2
Attack power: 2
Consecutive shots: 3



Throwdown Time, Professor!

Special Throwing Attack

This is a special Stunclubs attack. You can throw an opponent!

Gadget Combo Attacks

Plasma Control: RC Car + Stunclubs

Make a plasma ball by tilting the right analog stick. It explodes when you press the R3 button.

Wave Barrier: RC Car + Slingshot

Make a barrier around you, and you won't be hit for a while.

Large Detonation: RC Car + Dragonfly

Big explosions damage you as well as the people around you.

Cancel Limiter: RC Car + Dash Hoop

Speed, jump power, and attack power will go up for a while.

Transport Gadgets

Drum Boat

It's very strong and can take any attack. Don't slow down and just go wild!



Top speed: 4
Acceleration power: 1
Endurance: 5
Handling: 1

See Combo Attack: You can look at the combination of combo attacks and gadgets and set combos by pressing the L1 button.

Change Team Players: For Team Monkey and Pipotron, you can select an attacker from each team. You should pick a monkey with abilities useful for each level.

Once you've finished selecting gadgets, press the START button. When everyone is ready, let the game begin!

Level Rules

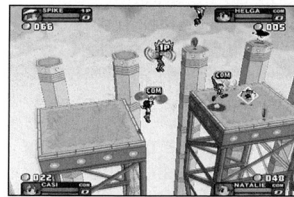
The High-Tech Tournament has many levels, each with different rules. Make sure you remember all the rules for each level.



Battle Rule: Battle with gadgets such as the Stunclubs, Slingshot, Tank, and WaterMech. If you survive, you win!



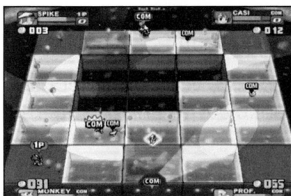
Race Rule: Race against each other. If you reach the goal first, you win!



Bonus Rule 1: You must collect coins in this level. The course automatically moves forward, and if you can't keep up with its speed and fall off the screen, you sustain damage. Whoever collects the most coins wins.



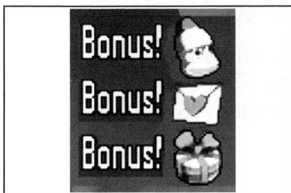
Bonus Rule 2: You must collect as many coins as possible within a time limit. Good luck!



Bonus Rule 3: If you break a floor by making the RC Car explode, coins will pop up from the broken floor in this stage. Everything else is the same as in Bonus Rule 2.

Level Results

You can see your rankings, points, and bonuses at the end of each level.



Bonus Icons: If your edited character does really well, you can get fans, fan letters, or gifts! Go to the Monkey Fan Club to see them.

Rankings: The total rankings for the tournament are displayed. After you finish all the tournament levels, the results will be automatically saved. Remember, your

memory card (8MB)(for PlayStation®2) must still be inserted in the MEMORY CARD slot you selected from the File Select screen in order for auto-save to work.

VS MODE

Multiplayer Tournaments



Up to four players can battle against each other in VS mode! You can battle in any tournament you played in Story mode. As you progress in Story mode, more tournaments become available in VS mode.

To start a tournament, select a character for battle. Choose an entry slot using the directional buttons and press the (X) button to enter the tournament.

You can also enter computer (COM) characters in the tournament. After you select a computer character, be sure to choose a difficulty level for him or her. If you press the (□) button, all empty slots will be filled with COM characters.

To begin, press the START button. More than two characters must enter to start VS mode. The character with the best score at the end of a tournament wins.



Nail the Prize, Natalie!

Special Attack Skills

By swinging the Stunclubs with precise timing, you can make a strong threefold attack. If they hit successfully, they can do big damage!

Gadget Combo Attacks

Flash Beam: Slingshot + Stunclubs

Make everyone around you faint. It doesn't do any damage.

Ground Shock Beam: Slingshot + Dragonfly

Fly in the air and throw bombs.

Dash Hoop Overboost: Slingshot + Dash Hoop

Attack everyone around you by swinging the Stunclubs.

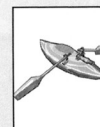
Bear Bomb: Slingshot + RC Car

Fire bear-shaped bombs.

Transport Gadgets

Mech Canoe

It's a super-high-speed, boat-type gadget that's very useful if you can handle it.



Top speed: 5

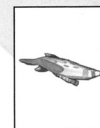
Acceleration power: 3

Endurance: 3

Handling: 1

Dive Board

Attack power is somewhat low, but it's very fast and easy to use.



Speed: 5

Endurance: 3

Attack power: 2

Consecutive shots: 3

Bullet guidance: 1

Gadget Combo Attacks

Dimension Break: Stunclubs + Slingshot

Swing the Stunclubs down hard.

Hurricane Crush: Stunclubs + Dragonfly

While doing a spin slash, you will fly up.

Sonic Revolution: Stunclubs + Dash Hoop

Unleash a high-speed spin slash against opponents around you.

Thunder Crack: Stunclubs + RC Car

The Stunclubs strike lightning.

Transport Gadgets

Boat

The boat is well-balanced. Be careful not to get hit.



Top speed: 3
Acceleration power: 3
Endurance: 3
Handling: 3

WaterMech

This gadget can swim freely in the water. It's very solid and has no weaknesses.



Speed: 3
Endurance: 3
Attack power: 3
Consecutive shots: 3
Bullet guidance: 2

Tank

The tank is very stable in any situation. It can fire powerful bullets!



Speed: 3
Endurance: 3
Attack power: 3
Consecutive shots: 3

Creating Custom Tournaments

You can also create an original tournament by combining up to eight of your favorite levels.



Set Frame: If you select a set frame you want to add a level to, the cursor moves to the table on the right side.

Done: Select this after you finish editing your tournament.

Stage: If you set this to Random, a different level appears every time.

Data from edited tournaments won't be saved. If you turn off your PlayStation®2 system, the data will be gone.

CREATING AND LOADING CHARACTERS

You can create and name custom characters using the Character Edit option. If you play with a custom character, good things may happen!

- Monkey Fan Club will support you! If you perform well on a level, more monkeys will join the Monkey Fan Club, and you'll receive fan letters and gifts.
- You can get bonus gadgets! Any bonus gadgets your custom character gets as gifts can be used in the Equipment Change option.

To use a custom character, please select Character Load from the Character Select screen of Story mode or VS mode.

To delete a custom character, select its character file and press the button.

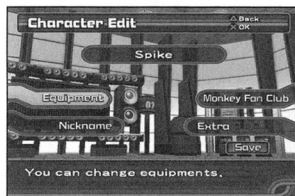
Creating Custom Characters

Select Character Edit from the Mode Select screen and you will be taken to the File Select screen. Pick a slot to create a new character.

Select a character file first. Then, select a base character in the Type Select screen. Next, give the character a nickname in the Nickname screen. You can use the directional buttons or left analog stick to select a letter, and then press the button to confirm your choice. If you make a mistake, you can delete the last letter using the button.

When you're done, select Done in the lower right corner of the screen. You will then proceed to the Character Edit screen. Once you're there, don't forget to save!

Character Edit Screen



Character Edit: You can change the settings of your custom character or see its results. You can also replay BGM and movies.



Equipment Change: Change your edited character's equipment in the Equipment Change screen.



Nickname: Change your custom character's nickname using the same steps you used to create a new character.



Monkey Fan Club: If you get fans, fan mail, or gifts, you can see them all here. You can also see your records for each stage.



Extra: Listen to BGM or watch movies.

Save: Once you change the settings of your custom character, please don't forget to save. To save your edited character's settings, the memory card (8MB)(for PlayStation®2) must be inserted in the same MEMORY CARD slot you selected in the File Select screen.

Tank Controls



What Is a Tank?

It's a powerful war vehicle you can use only in specific levels. Its performance varies depending on which character is using it.

Move Forward

If you move the left analog stick and right analog stick forward together, the tank moves forward. If you move them backward, the tank moves backward.

Change Direction

If you move the left analog stick forward or the right analog stick backward, the tank makes a right turn. If you do the opposite, the tank makes a left turn.



Fire Bullets

Fire bullets at your rivals using the L2 button, L3 button, R2 button, and R3 button. If they hit, they do big damage! You have 10 bullets.

Deadly Special Shot

If you hold the L2 button, L3 button, R2 button, or R3 button down for a bit and then release it, you will activate the Tank's special attack: Deadly Special Shot. Each Deadly Special Shot uses one stock skill.

CHARACTER SPECIAL ATTACKS



Strike 'em Down, Spike!

Special Attack Skills

By tilting the right analog stick right after performing a spin attack with the Stunclubs, you can attack an opponent with the Stunclubs while turning a somersault!

WaterMech Controls



What Is a WaterMech?

It's a gadget that lets you swim freely in the water in specific levels. It can fire missiles. The performance level varies depending on which character is using it.

Swim

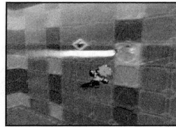
Tilt the left analog stick in the direction you want to swim.

Change Direction

If you tilt the right analog stick, you can change the direction your character is facing. If you move the right analog stick up, the character will look down. If you move it down, the character will look up.

Fire Bullets

Attack opponents using the L2 button, L3 button, R2 button, and R3 button! You have 10 bullets.



Deadly Special Shot

If you hold the L2 button, L3 button, R2 button, or R3 button down for a bit and then release it, you will activate the WaterMech's special attack: Deadly Special Shot. One stock skill is used up every time you make this shot.

Monkey Fan Club



You can get to the Monkey Fan Club from the Character Edit screen. Here, you can check out your gifts and fan mail, and see the Fan Club Members' List. Fans who have just joined the club or sent you fan letters or gifts will be labeled as new.

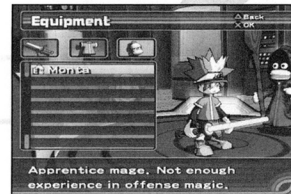
Next to each fan's name are an icon, a level name, and a score.

Icon: If you get a new fan, fan letter, or gift, the icon becomes brighter.

Level name/result: This shows the level where you got this fan. It also shows the best score from that level.



Equipment Change



You can use bonus gadgets you got from your fans using the Equipment Change option in the Character Edit screen. For items that are already equipped, the letter E is displayed in yellow next to the icon. From the Equipment Change screen, you can make the following edits:

Gadget: Select the gadgets you want to use. You can't use more than one of the same type.

Wear: Change your edited character's outfits!

Summon Pipo Monkeys: You can change which Pipo Monkey is summoned when you use the Summon Monkey command.

PLAYING THE GAME

Basic Actions



Run/Walk: left analog stick

If you tilt the left analog stick only a little bit, you can walk very slowly.

Jump: R1 button/R2 button

If you press the R1 button/R2 button again while you're already jumping, some characters will jump higher. If you are attacked and slammed against the wall, jump right away! That way you can recover your balance.

Defense: L3 button

Be aware that you can't block strong attacks.



Look Around/Back: L2 button

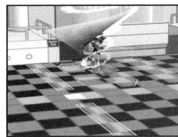
In some levels, you can look around with the L2 button. It's useful for finding everyone!

Camera Select: L1 button

In some levels, you can change the camera view with the L1 button.

Special Attacks: ○ button + × button; ○ button + △ button; × button + □ button; △ button + □ button

If you press two consecutive buttons at the same time, you can make deadly special attacks. When you make a special attack, one skill stock is used.



Gadget Combo Attack

Depending on the combination of gadgets assigned to the two buttons you press, you can perform various Gadget Combo Attacks. Each character has different combo attacks (see the Character Special Attack section).

Special Attack Gauge and Skill Stock

If your attack successfully hits your opponent, the Special Attack Gauge will increase. You can use up to three skill stocks.

What Is an RC Car?

It's a radio-controlled gadget. It can pick up items and coins, make explosion attacks, and more!

Summon an RC Car

The RC Car will appear near your character if you press the R3 button.

Move

The RC Car moves in the direction the right analog stick is pointing. While moving the RC Car with the right analog stick, you can move your character with the left analog stick at the same time.



Explosion

The RC Car explodes if you press the R3 button. It does big damage to everyone around it.

Boat Controls

What Is a Boat?

It's a gadget you use to move on the surface of the water in specific levels. Its performance level varies depending on which character is using it.

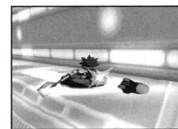
Move Forward

By turning the left analog stick and right analog stick to the outside at the same time, you can move forward. If you turn them to the inside, you can move backward.



Make a Turn

If you turn the left analog stick to the outside or the right analog stick to the inside, the Boat makes a right turn. If you turn them the opposite way, the Boat makes a left turn.



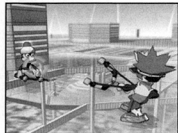
Fire Bullets

Shoot bullets at your rivals using the L2 button, L3 button, R2 button, and R3 button!

Deadly Special Shot

If you hold the L2 button, L3 button, R2 button, or R3 button down for a bit and then release it, you will activate the Boat's special attack: Deadly Special Shot. One stock skill is used up every time you make this shot.

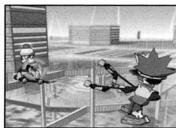
Shoot a Bullet



Tilt the right analog stick to pull the string in that direction, and release the string to fire! If you fire items you pick up in a level, you can do bigger damage!

Lock On

The bullet will automatically aim at the opponent nearest to you. A blue target mark will appear on the targeted character.



Sharp Shooting

Press the L2 button to enter first-person view mode. While you're looking, you'll see a round, red mark. Move it over your target with the left analog stick and fire away!

Dash Hoop Controls



What is a Dash Hoop?

It's a gadget that helps you run fast. You can hurl yourself with this gadget.

Dash

You can dash by spinning the right analog stick!

Hurl Yourself

If you hurl yourself at an opponent while making a dash, you can knock down the opponent and do damage!



Run up a Slope

During a dash, you can easily run up even steep slopes.

RC Car Controls



Summon Monkey

If you select two gadgets not used for the Gadget Combo Attacks, you can summon a monkey. You can pick a different Pipo Monkey to summon using the Equipment Change option in the Character Edit screen.



Items



HP Recovery

HP recovers a little bit.



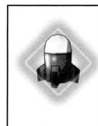
Skill Stock

One more skill stock for the Special Attack Gauge is added.



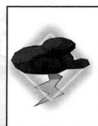
Fire Suit

If you touch another character after taking this item, you can inflict fire damage.



Top Buster

Bombs are thrown at the character who is currently in first place.



Lightning

Lightning strikes all the characters except the one who takes this item.



Banana Peel

Scatter banana peels around you to give others the slip. If you step on one yourself, you will also slip, so be careful!



Flak Jacket

You won't take any attack damage for a while.



Cloaking Jacket

You'll be invisible from others for a while.



Power Shot

You will get 10 stronger projectiles. If you are riding on a transport gadget, you get 10 regular projectiles.



Speed Up

You will get a short burst of speed on your transport gadget.

Using Gadgets

Select the best gadget for each level using the Gadget Select screen. First, assign a gadget to each button: ○ button, × button, △ button, □ button.

Basic Gadget Controls

Use Gadgets (right analog stick)

You can use gadgets with the right analog stick. Each gadget requires a different control. Master them all!

Switch Gadgets (○ button/× button/△ button/□ button)

When you press each of these buttons during the game, the gadget in your hand will switch to the one assigned to the button.

Stunclub Controls



What Are Stunclubs?

They're a gadget used to hit something. You can attack characters nearby with it.

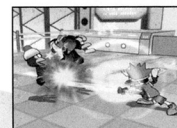
Attack Forward

Your character attacks in whatever direction the right analog stick is pointing.

If you successfully hit an opponent, you can do damage!

Spin Attack

If you spin the right analog stick around, you can do big damage to opponents around you!



Special Attack Forward

If you keep the R3 button pressed down for a bit and then release it, your character will perform a Special Attack Forward. Each character performs a different attack.

Dragonfly Controls

What Is a Dragonfly?

It's a gadget that lets you fly high. It's very useful in Course tournaments!

Fly

If you spin the right analog stick around, you can rise into the air and fly while the Dragonfly is spinning.



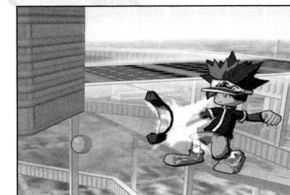
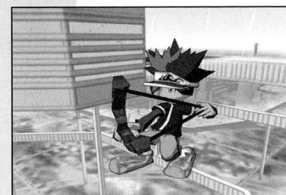
Jump Far

If you use the Dragonfly right after making a jump, you can jump far!

Recover Balance

If you spin the Dragonfly when you are off balance, you can recover your balance.

Slingshot Controls



What Is a Slingshot?

It's a gadget that sends a bullet flying. Target and shoot at an opponent who's far away!