



NINJA

COMMANDO™

NINJA COMMANDO USER'S MANUAL

NINJA COMMANDO
USER'S MANUAL

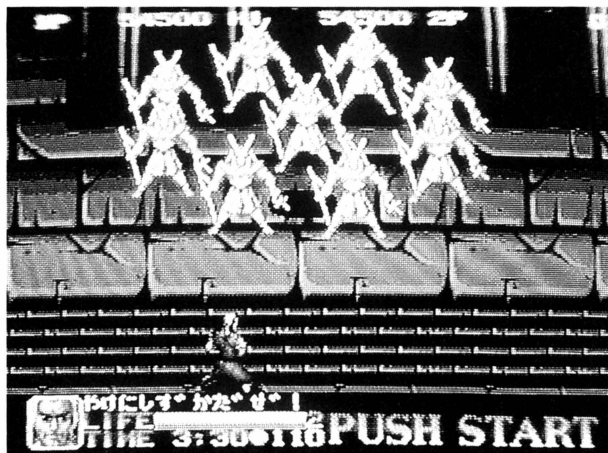
✧ NINJA ✧ COMMANDO

"SPIDER", A MERCHANT OF DEATH, PLANS TO INVOLVE
THE FUTURE WORLD IN A SWIRLING BATTLEFIELD,
DISTURBING THE PAST WITH HIS TIME MACHINE.
NOW NINJAS WORLDWIDE WILL UNITE TO
PROTECT HISTORY
FROM "SPIDER'S" EVIL PLAN.



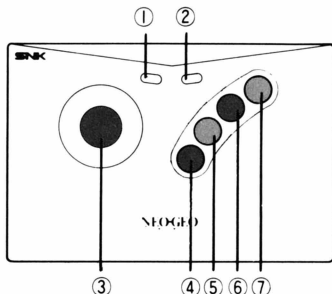
CONTENTS

GAME STORY.....	1
CONTROLS/SAVE & LOAD	3
GAME SCREEN.....	4
CONTENTS OF THE GAME	5
HEROES	6
ITEMS.....	7
DEATH BLOW.....	8
CREATE THE STAGES.....	11
ENEMY CHARACTERS.....	14
INSTRUCTION OF CARTRIDGE AND MEMORY CARD.....	16



CONTROLS/SAVE & LOAD

NINJA COMMAND CONTROLS



- ① SELECT BUTTON...PAUSE
 - ② START BUTTON...STARTS
 - ③ JOYSTICK.....MOVEMENT
 - ④ A BUTTON.....SHOT
(Power increases by holding down button)
 - ⑤ B BUTTON.....BACKWARD SOME
RSAULT
 - ⑥ C BUTTON.....NINJA TRICKS
(Consumes some energy)
 - ⑦ D BUTTON.....NOT USED
- * If you press the A button during the backward somersault, you can throw a knife.

SAVE & LOAD

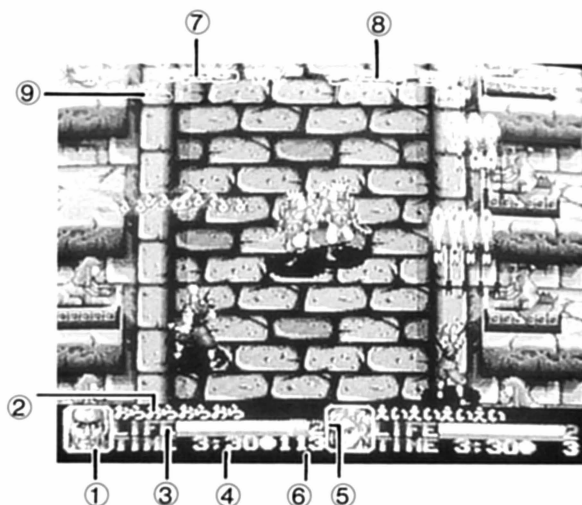
●SAVE

Before starting the game, insert the memory card into the console, and after the game ends the "SAVE SELECTION" will appear on the screen. choose YES or NO and press the A button to confirm.

●LOAD

Turn the power on and insert the memory card. When the "MEMORY CARD LOAD" screen appears, choose YES or NO and press the A button.

GAME SCREEN



● PICTURE DISPLAY ●

- ① Heroes present face
- ② Dialogue of characters. Hero's burning heart.
- ③ Hero's life gauge. If you lose all your strength, you will lose one life.
- ④ Time limit for one player. If time expires, you will lose one life.
- ⑤ Number of hero's lives remaining.
- ⑥ Number of coins collected by hero.
After the end of the stage, you will recover some of your life level depending on how many coins are collected.
- ⑦ Score
- ⑧ High score
- ⑨ Number of scrolls collected. You can temporarily transform to invincible beast.

CONTENTS OF THE GAME

●THE AIM OF THE GAME●

Control Joe, Rayar, or Ryu and use the shot, and ninja tricks. Use the death blow to break the traps set in each era. Beat the merchant of death, Spider, and secure a peaceful future.

●HOW TO START GAME●

Press start button of controller 1 or 2 to start game. Press start button of controllers 1 and 2 to start 2 player game.

●LEVEL SELECT●

EASY

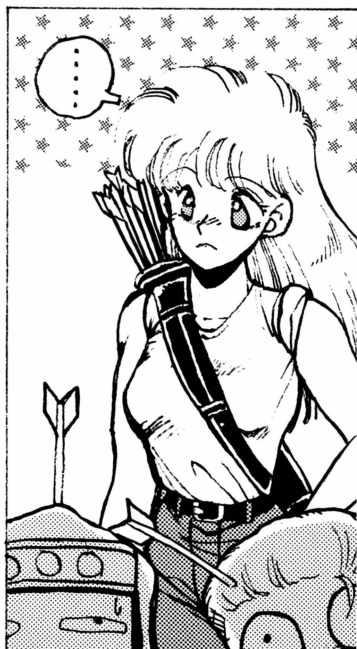
NORMAL Use the joystick to
HARD select level and press
MVS the A button.

●BUY-IN●

Another player can buy-in the game by pressing start button of other controller during 1 player play.

●CONTINUE●

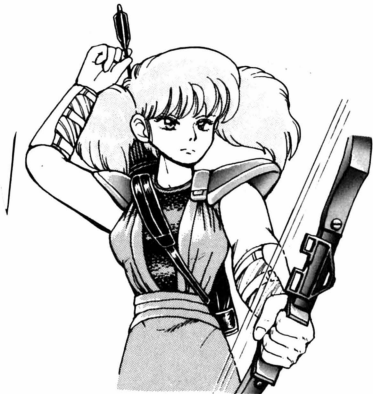
You can continue by pressing the start button during the continue countdown, even when no lives remain.



HEROES

JOE TIGER

He is an American descendant of the Japanese Kouga Ninjas. He is good at quick attacks and throws a knife as his weapon. Power up can increase attack to up to 13 directions.



RAYA DRAGON

She is a Britain interested in Ninja skills. She mastered the Iga Ninja trick and is good at archery with a spirit-tipped arrow as her weapon. Power up can increase arrow attack to up to 6 at a time.

RYU EAGLE

A descendent of the Fuma Ninja clan and is known as the "32nd Kotaro Fuma". Master of the spirit handling trick that uses his body as his weapon. Power up creates a bigger and stronger burst depending on its level.



ITEMS

SUSHI



MEAT



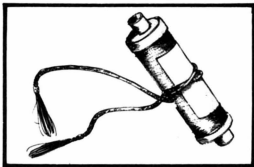
COLA



BANANA

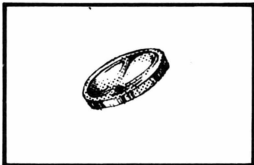


SUSHI·MEAT·COLA·BANANA Recover life



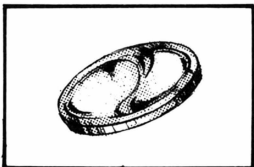
SCROLL

If you get three scrolls, you can temporarily transform into an invincible ninja.



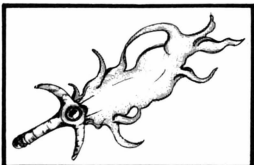
COIN(SMALL)

After the stage ends, you can recover your life level depending on how many coins you collect.



COIN(BIG)

Effective as five small coins.



FIRE SWORD

It makes the sword emit fire for a certain time.

* If there is no power item, it is a continuous shot.

DEATH BLOW

JOE TIGER

NINJA TRICK

[FIRE ATTACK]

Burns all enemies with a single strike.

DEATH BLOW

[THUNDER TRICK]

Joystick ↓ when his body shines ↑ +A button. Fire a temporary thunder bolt.

[TORNADO ATTACK]

Joystick ↓ ↘ → +A button. A plasma ball will appear to create tornado around hero.

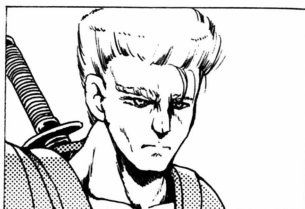
[DOUBLE TORNADO ATTACK]

Joystick ↖ ← ↙ ↘ → ↘ +A button.
Bears two tornadoes at one time.
One of the best Kouga Ninja tricks. This destructive force is superior to the fire attack.

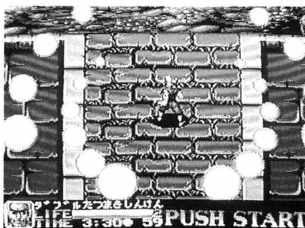
TRANSFORMATION

With three scrolls, Joe will transform into a tiger. No enemy will remain.

On any character, pressing the A button while executing the backward somersault will shoot the backward somersault shuriken. This attack is very powerful.



THUNDER TRICK



DOUBLE TORNADO ATTACK

RAYAR DRAGON

NINJA TRICK [MIZINGAKURE]

You can destroy almost every character with a bomb blast.

DEATH BLOW [FIRE PHOENIX ATTACK]

Use the joystick until the spirit rises, and when the body shines, use the joystick + A button.

[FLAME TRICK]

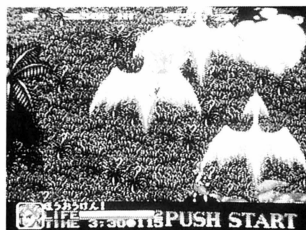
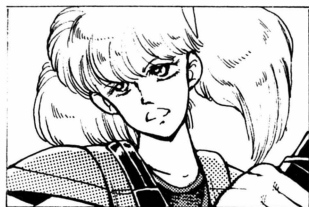
Press A button continuously. Divide and dazzle the enemy.

[FIRE WALL]

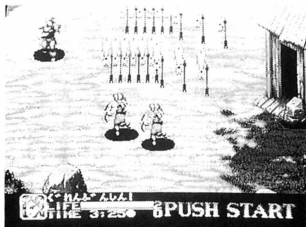
Joystick ↓ + A button. Create the fire wall to avoid enemy attack.

TRANSFORMATION

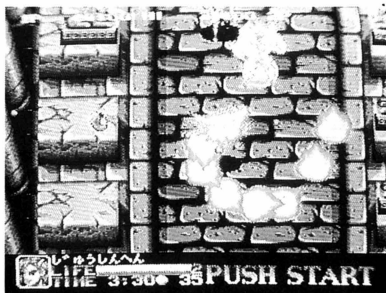
With three scrolls, Rayar will transform into the dragon. No enemy will remain.



FIRE PHOENIX ATTACK



FLAME TRICK



TRANSFORMATION

RYU EAGLE

NINJA TRICK

[BLACK HOLE]

Save the spirit to the limit, and release a high density power ball. It lasts for a short time, and it will not increase more than a parablack hole.



DEATH BLOW

[BURSTING KING'S ATTACK]

Joystick ↓ until the spirit rises up, and when the body shines, joystick ↑ + A button.



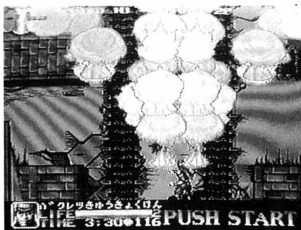
BURSTING EMPTY AIR ATTACK

[BURSTING EMPTY AIR ATTACK]

Joystick ↓ ↘ → + A button, to make the vacuum air attack from both sides of the heroes.

[BURSTING ULTIMATE ATTACK]

Joystick ↑ ↙ ↘ ↖ ↗ ↓ + A button. It is three times stronger than the bursting king's attack. It has been a long time since anyone has used it.



BURSTING ULTIMATE ATTACK

TRANSFORMATION

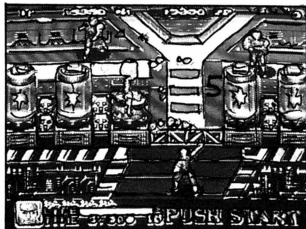
With three scrolls, Ryu will transform into an eagle. No enemy will remain.

CREATE THE STAGES

●STAGE 1●

INFILTRATE MARS CORPORATION

The secret base of "Spider", and a compound military industries head office. There is thought to be a small time machine hidden somewhere in the corporation. The mission was to obtain the machine to investigate each period of time. There heroes caught in a "Spider's" trap were blown away beyond space and time.



From here,
the next three eras are at random.

○STAGE 1○

PRIMITIVE AGE

Originally, no one existed in this period. Now, primitive men were found. They have to be the subordinates of "Spider". The mission is to avoid the primitive men and the dinosaur's continuous attack to move ahead.

○STAGE 2○

EGYPT ERA

Is it the pharaoh's curse, or the "Spider's" plot? In the strange atmosphere, ancient egyptian soldiers began to attack. Their attack is strong, and they are sure to be a tough fight.

○STAGE 3○

JAPANESE CIVIL WAR ERA

We have no time lose! The Samurai infest Japan, and the Ninjas will be on the attack. How could it be? Even women were joining in the fight. At last, the Fuma ninja's old enemy, Nobunaga, was waiting to attack. Is he the real Nobunaga? He could be one of the "Spider's" men.

●STAGE 5●

THE ERA OF THREE COUNTRIES



"Spider" was crushed. Ninja commando succeeded in their mission! Or did they? "Rofu", the hero of this period, was sent to the last fort of Asia.

●STAGE 6●

WORLD WAR 2

"Spider's" last fort, Europe, and the last step for Ninja Commando to succeed.

"Spider" brought the future's most advanced heavyweight tank, and set out for the final conflict against the commandos.



●LAST STAGE●

SITE OF MARS CORPORATION(FUTURE)

"Spider" has escaped, and no one remained in the building. However, as long as the computer exists, the second or third boss might show up. At the risk of earth's future, the final war would begin.



ENEMY CHARACTERS

NOBUNAGA



SNIPER

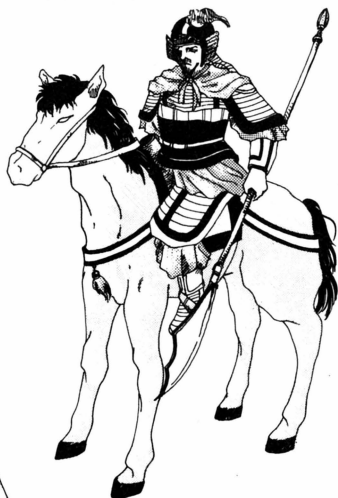


NINJA

GRENADIER



CAVALRY



FIRE DRAGON

SPEAR COMPANY



[ATTENTION]

- This product can only be used on the NEO GEO.
- Do not disassemble!!
Contains high precision parts!
- Avoid dropping or other strong shocks.
Keep away from extreme temperatures.
- Do not touch terminal.
Avoid exposure to water and dust.
- Damage may be caused if cleaned with thinner or benzine.
- After game play, pull AC adaptor from outlet.

[MEMORY CARD PRECAUTIONS]

- Insert the memory card as the arrow shows.
- During load/save for memory card, do not insert or pull out the memory card or game cartridge.
Do not shut off the main switch!
- Keep water and dust away from the connector of NEO•GEO memory card.

NEO
ADVANCED ENTERTAINMENT SYSTEM
GEO

SNK
ALPHA