



NEO-GEO SYSTEM NGH-009 NINJA COMBAT USER'S MANUAL

NINJA
COMBAT™

NGH-009

From out of the darkness and into the light,
come two great warriors with the power,
discipline and strength to conquer the many
evil Ninjas that have been released from the
wicked Ninja Fortress.

Master your weaponry skills and use your
Ninpo Magic wisely as you begin the
NINJA COMBAT!

(INDEX)

| | |
|---------------------------------|----|
| HOW TO PLAY / SAVE & LOAD | 3 |
| GAME SCREEN | 4 |
| GAME CONTENTS | 5 |
| MAIN CHARACTERS | 6 |
| ITEMS | 7 |
| STAGES | 8 |
| ENEMY CHARACTERS | 10 |
| CAUTIONS | 12 |

■ EXPLANATION OF CONTROLLER

① SELECT BUTTON

Pause.

② START BUTTON

Push to start.

③ 8-way joystick

Use to control direction of character & cursor.

④ A BUTTON

ATTACK/You can use NINPO MAGIC when you hold down until power is full.

⑤ B BUTTON

Jump.

⑥ C BUTTON

Flying leap attack.

⑦ D BUTTON

Not used.

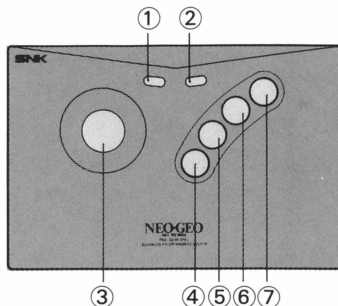
Ⓢ (B BUTTON + A BUTTON)

Jumping attack.

Ⓢ (C BUTTON + A BUTTON)

Flying leap.

※ Demo screen is cancelled by pushing A Button.



SAVE & LOAD

■ SAVE & LOAD (Memory card is used for saving and loading)

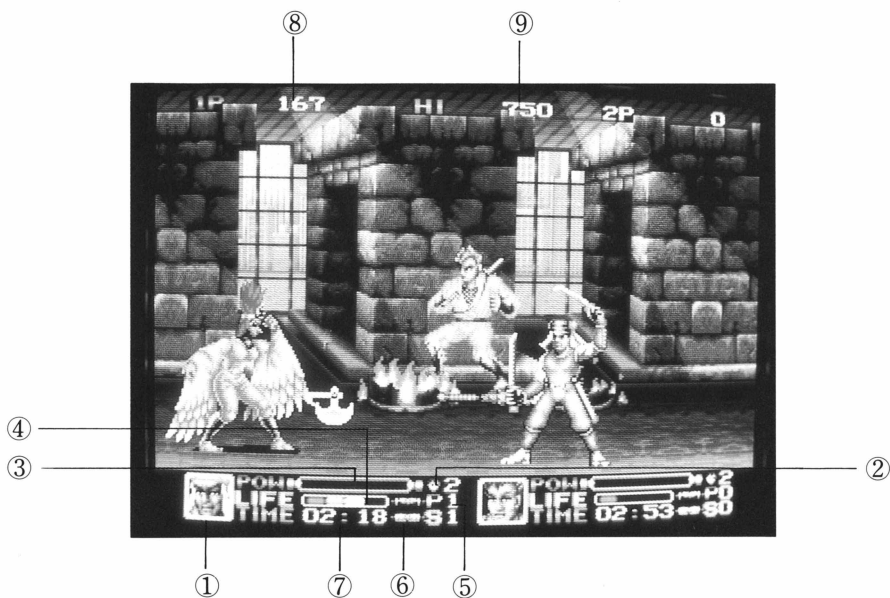
[SAVE] Insert memory card into the hardware before starting game.

It will automatically save the game play when the continue countdown reached 0.

[LOAD] Turn the power on for the hardware and insert Memory card.

When you push the start button, the data is loaded.

(Data will not be loaded when you insert the Memory card after pushing the start button.)



■ INDICATION OF THE GAME SCREEN

① PLAYER'S CHARACTER

② LIVE'S REMAINING

③ PLAYER'S POWER GAUGE

NINPO MAGIC can be used when you hold down the A Button until power gauge is full.

④ PLAYER'S LIFE GAUGE

It decreases when you are wounded.

When you use NINPO MAGIC, scale decreases by one.

When your scale is empty, you lose one life.

⑤ GREEN POWER SCROLL

Green power number increases when you find POW items.

⑥ BLUE SPEED SCROLL

Blue speed number increases, making character move faster.

⑦ Fixed time for each player. He loses one hero when TIME reaches 0.

⑧ PLAYER'S SCORE

⑨ HIGH SCORE

■ GAME CONTENT

Form the Ninja combat team with Musashi, Kagerow and Genbu. Fight together as one through the many tough battles of evil Ninjas to reach "Genyosai" and defeat him, for he is the most wicked Ninja of them all.

■ HOW TO START THE GAME

Game starts when you push the start button for either Player 1 or Player 2. When you push both start buttons for Player 1 and Player 2, simultaneous play will begin.

■ BUY IN

When you push the start button on your second or additional controller during the game play for Player 1, Player 2 can join in at any time.

■ CONTINUE

You can resume game play from the stage where you finished last when you push the start button during the continue screen even if you have no life.



MAIN CHARACTERS



J O E

Survivor of SHINOBI FAMILY.
He is excellent in the art of Shuriken and can use weapons that the enemy has. He can move quickly and attack enemies by turning a backward summersault.

☯ NINPO MAGIC-FIRE DRAGON



HAYABUSA

Survivor of SHINOBI FAMILY.
He is excellent in the art of Shuriken and can use weapons that the enemy has. He can move quickly and attack enemies by turning a backward summersault.

☯ NINPO MAGIC-POWER THUNDER

MUSASHI

Survivor of SHINOBI FAMILY.
He has had a spell cast upon him by "GENYOSAI", which temporarily clouds his judgement in joining your NINJA COMBAT Team. He slashes his two swords together which send out a strong wounding light. He moves quickly and attacks enemies by leaping with a tornado spin.

☯ NINPO MAGIC-STRONG CUTTING GHOST LIGHT



KAGEROW

Mysterious woman ninja called KU-NOICHI. She uses a sword which emits tornados. She dodges enemies' attack by turning backward summersault and attacks enemies turning cartwheels.

6 ☯ NINPO MAGIC-KAGEROW MAGIC



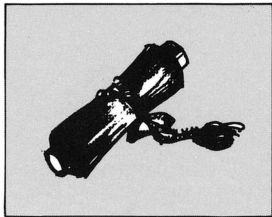
G E M B U

Once he also stood in the hero's way as an enemy, now he joins their team learning that he had been deceived by GENYOSAI.

He defeats by strong sumo attack.

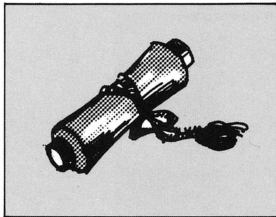
☯ NINPO MAGIC
-STOMPS GROUND WITH MIGHTY FORCE

■ KIND OF SCROLL



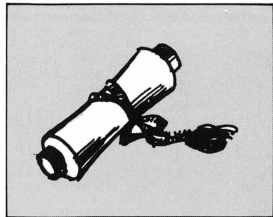
[GREEN SCROLL]

Attack power increases up to 2 points.



[BLUE SCROLL]

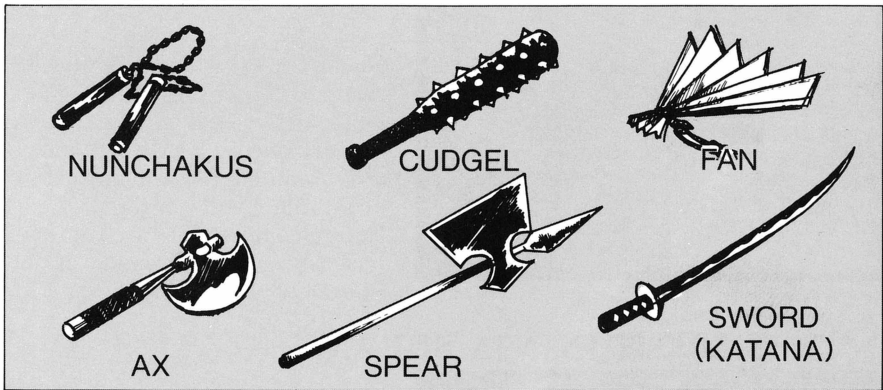
Speed increases up to 2 points.



[YELLOW SCROLL]

Bonus life is awarded.

■ KIND OF ITEM



■ OTHER ITEMS

When you destroy enemies or obstacles, various items will come out.

(Scroll, soda, hamburger, etc.)

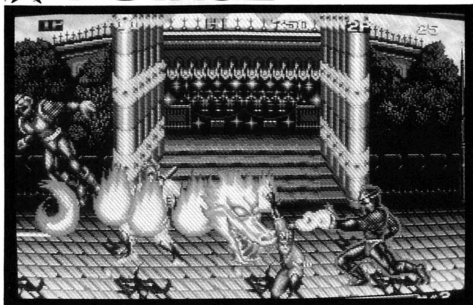


[SODA]

Life will be recovered by one scale.

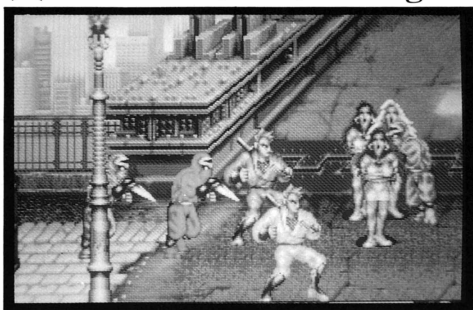
STAGES

✧ 1-STAGE [NINJA PARK]



Amusement park in the suburbs of New York City. Joe and Hayabusa received information that the SHADOW FAMILY is causing chaos and ruining the amusement park. A NINJA GANG will attack one after another joined by the cursed Musashi.

✧ 2-STAGE [Revenger of KUNOICHI]



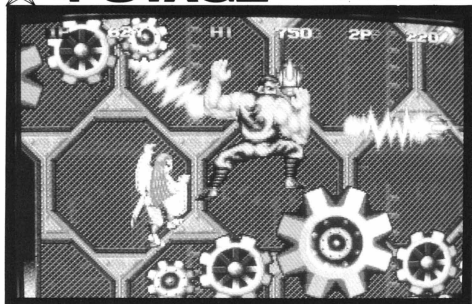
New York City, downtown by the riverside. There is evidence of violent activity and destruction by the SHADOW FAMILY. Women are screaming for help at the foot of a bridge, you must save them! But remember, this area has already been in the hands of the SHADOW FAMILY.

✧ 3-STAGE [NINJA SUBWAY]



Notorious New York Subway. SHADOW FAMILY has already been here too. Hero jumps onto a train on route to the enemy. Beware!

✧ 4. STAGE [NINJA TOWER]



Joe and Hayabusa form the NINJA COMBAT Team with MUSASHI, KAGEROW and GENBU.

You must invade the hideout of the enemy...the evil "NINJA TOWER!"

✧ 5. STAGE [.....?]

✧ 6. STAGE [.....?]

✧ 7. STAGE [.....?]



ENEMIES CHARACTERS



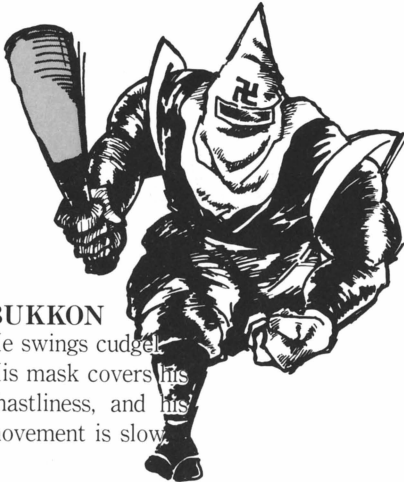
GAI
He draws his sword when approached by hero, beware of his jumping attack.



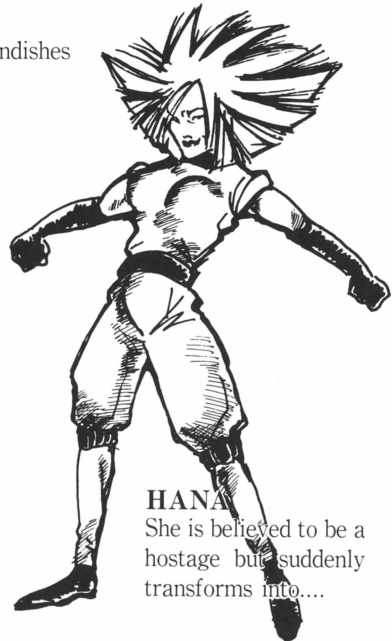
DEBRA
Fat man holding ax. Use caution as he brandishes his ax to take your hero's life.



NINKEN
They attack in groups. They have human bodies and the faces of wolves. Running in a low stance is the characteristic of this pack of NINKENS.



BUKKON
He swings cudgel. His mask covers his ghastliness, and his movement is slow.



HANA
She is believed to be a hostage but suddenly transforms into....



IRON BALL NINJA, ITAIZO
(4th stage boss)

Both arms are equipped with iron balls to attack.
He moves at tornado speed.



BIRDWOMAN NINJA, BIBILNBI
(2nd stage boss)

She was raised by a great flock of birds from her childhood. Her strong legs and winged arms enable her to attack from high up in the sky. *NINPO MAGIC-TORNADO ATTACK.



MECHANIZED NINJA
(3rd stage boss)

Mechanized Ninja who is completely clad in armor, stoops to transform into a metal ball to roll over hero.

【ATTENTION】

- This product can only be used on the NEO GEO Rental System.
- Do not disassemble !!
Contains high precision parts!
- Avoid dropping or other strong shocks.
Keep away from extreme temperatures.
- Do not touch terminal.
Avoid exposure to water and dust.
- Damage may be caused if cleaned with thinner or benzine.
- After game play, pull AC adaptor from outlet.

【MEMORY CARD PRECAUTIONS】

- Insert the memory card as the arrow shows.
- During load/save for memory card, do not insert or pull out the memory card or game cartridge.
Do not shut off the main switch!-
- Keep water and dust away from the connector of NEO•GEO memory card.

NEO-GEO IS A TRADE MARK REGISTERED BY SNK.

SNK CORPORATION