

FINAL FANTASY™



Explorer's Handbook





This official seal is your assurance that Nintendo® has reviewed this product and that it has met our standards of excellence in workmanship, reliability, and entertainment value. Always look for this seal when buying games and accessories to ensure complete compatibility with your Nintendo Entertainment System®

This game is licensed by Nintendo® for play on the



Nintendo and Nintendo Entertainment System are trademarks of Nintendo of America Inc.

Thank you for selecting the Final Fantasy™ Game Pak for your Nintendo Entertainment System.®

PRECAUTIONS

- 1) This is a high precision Game Pak. It should not be stored in places that are very hot or cold. Never hit it or drop it. Do not take it apart.
- 2) Avoid touching the connectors. Do not get them wet or dirty. Doing so may damage the Game Pak and/or the Control Deck.
- 3) Do not clean with benzene, paint thinner, alcohol or other such solvents.
- 4) Store the Game Pak in its protective sleeve when not in use.
- 5) Always check the Game Pak edge connector for foreign material before inserting the Game Pak into the Control Deck.

Note: In the interest of product improvement, Nintendo Entertainment System specification and design are subject to change without notice.

⚠ WARNING ⚠

DO NOT USE WITH FRONT OR REAR PROJECTION TV

Do not use a front or rear projection television with your Nintendo Entertainment System® ("NES") and NES games. Your projection television screen may be permanently damaged if video games with stationary scenes or patterns are played on your projection television. Similar damage may occur if you place a video game on hold or pause. If you use your projection television with NES games, Nintendo will not be liable for any damage. This situation is not caused by a defect in the NES or NES games; other fixed or repetitive images may cause similar damage to a projection television. Please contact your TV manufacturer for further information.

Table of Contents

How to Begin Your Final Fantasy Adventure	2
Your Adventure Begins	4
Begin at Castle Coneria	5
Outfit Your Trek in Coneria	9
Journey to the Temple of Fiends	17
Rescue the Princess at the Temple of Fiends	27
Meanwhile, Back in Coneria	30
To the North Bridge	32
How to Organize an Adventure Party	34
The Cave of Matoya	38
Go to Pravoka!	41
Castle of Elf	47
Go Shopping in ElfLand	50
The Dwarf Cave	52
Find Astos	54
The Marsh Cave	55
Return to the Northwest Castle	56
Return Matoya's CRYSTAL	57
Wake the Sleeping Prince	58
Remember All the Locked Doors?	59
Help Nerrick	60
The Town of Melmond	61
Titan's Tunnel	63
Enter the Earth Cave	64
Pass Through Titan's Tunnel	65
Visit Sarda	66
Solve the Mystery of the Earth Cave	67
Crescent Lake	68
Gurgu Volcano	70
The Ice Cave	72
The Ryukahn Desert	73
Soar Over the Entire World	74
Class Change	75
White Magic	76
Black Magic	78
Index	80

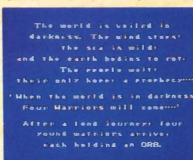
How To Begin Your Final Fantasy Adventure

Insert your Final Fantasy Game Pak into your NES as described in your NES control deck manual. Turn the POWER on and you're ready to embark on your journey!

① Select "NEW GAME" or "CONTINUE"

After you turn the POWER on, a small portion of the Final Fantasy story will be shown. Press the START button on controller #1 to advance to the CONTINUE/NEW GAME screen. Use the **+** Control Pad to select NEW GAME (CONTINUE is used to continue a saved game) and press the START Button. The basic controller functions are as follows:

- +** Control Pad — Move party and select options
- A** Button — Talk, search, or enter selections
- B** Button — Cancel/Go back one screen
- Select** — Change marching order
- Start** — Bring up status screen



The world is united in darkness. The wind weeps the sea is wild! and the earth begins to rot. The people wait! their only hope a prophecy...
"When the world is in darkness from Mardians evil conquest"
After a long journey four young warriors arrive each holding an ORB.



RESPOND RATE

On the CONTINUE/NEW GAME screen, you can change the RESPOND RATE by using left and right on the **+** Control Pad. A rate of 1 will result in a slow message speed. A rate of 8 is very fast.

HOW TO SAVE (IMPORTANT!)

Your Final Fantasy Game Pak is equipped with a battery that allows you to SAVE your game in order to CONTINUE at a later time. It is a good idea to SAVE your game often. The easiest way to SAVE is to stay at an INN. You can also SAVE by using a HOUSE, CABIN, or a TENT. These will be explained later. Always hold in the RESET button when turning the power off!



2 ASSEMBLING YOUR PARTY

After you select NEW GAME, you will see the screen shown below. Use the + Control Pad to choose a character type (occupation) starting with the upper left character. Refer to page 34 for more information about each character type.

CHARACTER TYPES

Each of the different character types has its advantages. For instance, the Fighters are good at using weapons, but a Magician may have trouble with some weapons. As you learn more about the game, you will find the characters that will work best for you.



ENTER THE NAMES

A letter selection screen will appear. Using the + Control Pad and the A Button, spell out each character's name (up to four letters.) If the name is less than four letters, use the space below the 'T'. Repeat the process for all four characters. Then press the A Button to start the game.

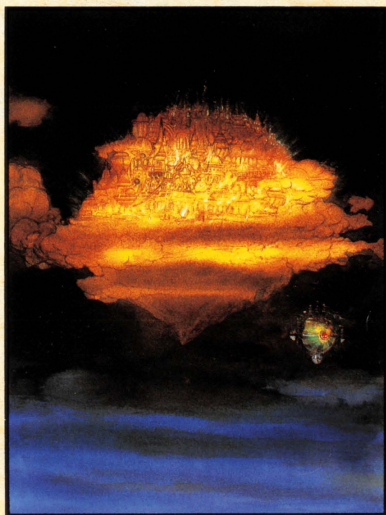


Sample the Game With the Default Party

To get into the game quickly, just press the A Button repeatedly until the game starts. Later, you will want to rename them, but it's a good way to sample the game.



Using the default party will allow you to get into the game quickly.



Your Adventure Begins . . .

Your Four Warriors begin their quest at the entrance to Coneria, the Dream City. Within sight are many geographical features of this world. It is important to understand the terrain in order to guide your adventure party on its quest.

Castle

The pleas of the people within the castle will guide your quest. Use their information wisely.



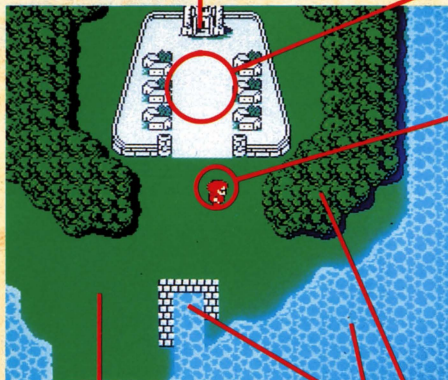
Town

The townspeople will also assist you on your quest. The use of their SHOPS, INNS, and CLINICS is vital.



Hero

Your adventure party's lead character.



Grassy Plains

Travel here is unlimited.



Forest

Travel here is limited to foot traffic only.



Port

At ports your SHIP can dock, allowing you to explore new lands, or to return home.



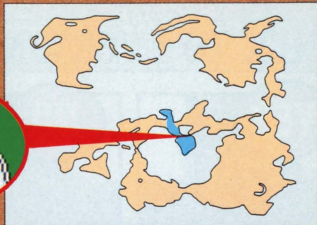
Ocean

To navigate the oceans and seas you must use your SHIP.



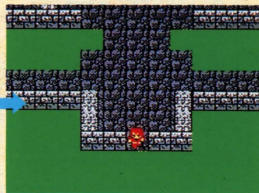
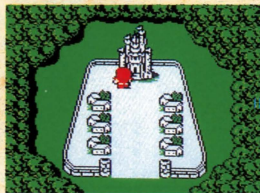
Begin at Castle Coneria

The Castle Coneria is where your journey begins. Inside, find people to guide your quest. Solve their puzzles and mysteries, and return after doing so to receive your rewards.



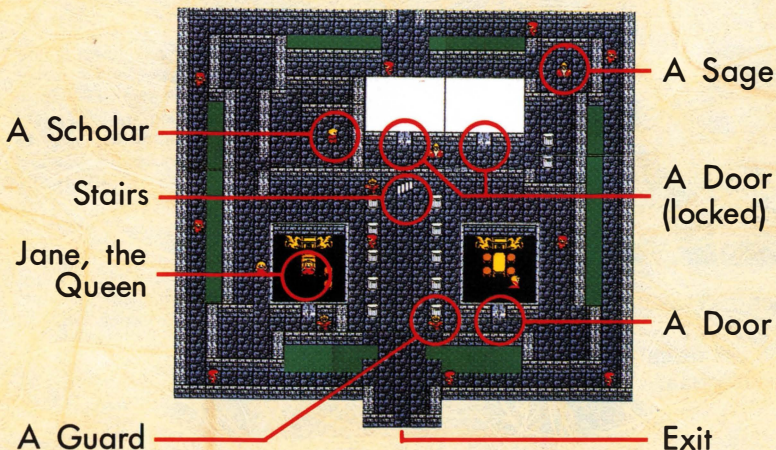
Enter the Castle

Walk into the castle to enter. As you enter the castle, the screen will close on the castle scene. When it re-opens you will be inside the castle.



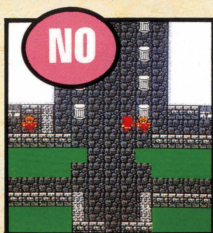
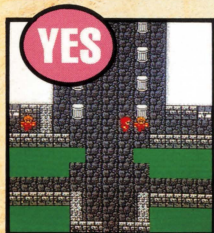
CASTLE CONERIA — 1ST FLOOR

This castle is two stories tall. Explore the ground floor making sure to talk to everyone. Keep an eye out for the staircase leading to floor 2.



Gain information

TALK TO EVERYONE



While in a castle, town, cave or dungeon you must talk to everyone, even animals! To do this simply face towards them and press A. Make sure to search out all the inhabitants of any area you visit. The gathering of information is basic to the playing of any Adventure Game. When you wish to cancel the conversation press A again.



Face the guard to begin your conversation. Press A to talk. Then press A again when you finish reading the message.

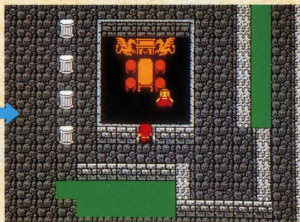
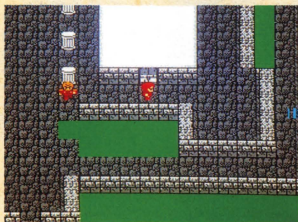


You will meet a great variety of people as you travel on. Some will tell you all that you need to know while others will present a mystery.

Use the door

ENTER THE CLOSED ROOMS

Many areas will be closed off to your view upon first entering the castle. Do not worry though, many of these can be opened to reveal what is hidden inside. If a door does not open, push A to investigate the trouble.



Walk towards the door, and continue through. The ceiling will disappear allowing you to guide the Warriors to what awaits inside.

Face the Queen, and press A. She will reveal her dilemma.

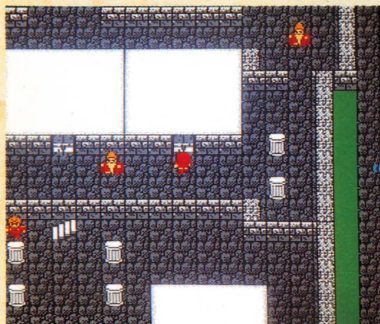


Princess Sara has been kidnapped!

Stairs and Doors

OPEN THE LOCKED DOORS

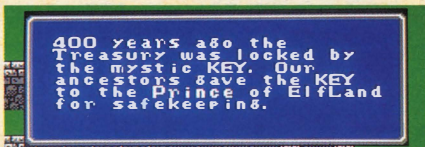
Not all of the doors that you will encounter can be opened at the beginning of your adventure. Some of those doors were locked long ago to keep out unauthorized personnel, and inexperienced Light Warriors. Luckily for you, those that locked the door left the key. Unfortunately the key was sent to a distant city.



You push and push against the door, but it just won't open.



Pushing A to investigate, you find that the door has been locked.

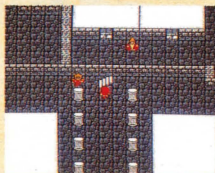


To enter the treasury you must locate the mystic KEY. After the Elf Prince gives it to you, return here to gain access.

Use The Stairs

CLIMB TO THE SECOND FLOOR

To climb up or down a stairway, walk across the top of it. The screen will close on the current scene, re-opening on that of the next floor. Make sure to search out and investigate all of the stairways that you find on your travels.



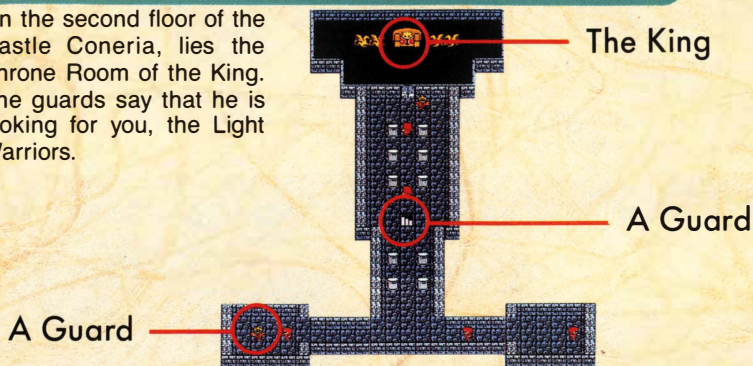
Walking over the Up staircase will take you to the next floor. Now, a whole new floor of this castle can be investigated.



Walking over the Down staircase will return you back one floor, but don't do this until you've examined this new floor.

CASTLE CONERIA — 2ND FLOOR

On the second floor of the Castle Coneria, lies the Throne Room of the King. The guards say that he is looking for you, the Light Warriors.



Proceed To The Throne

MEET THE KING

On the second floor you will find clues telling you of a missing princess. Search every corner to receive every clue.

LIGHT WARRIORS... Just as I'd wished, Garland has kidnapped the Princess. Please help me!

The King pleads for the rescue of Sara, his daughter.

Reports say that Garland holds the Princess in a Temple to the northwest.

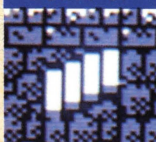
It's no great mystery where Garland hides. Go get him.

Use The Stairway

RETURN TO FLOOR 1

Walking directly over a stairway will allow you to go up or down, depending on the stairs direction.

GOING UP



GOING DOWN

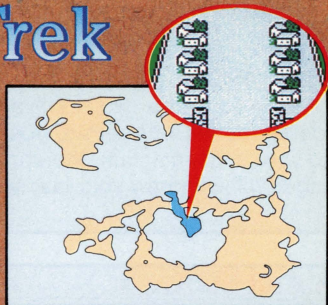


NOTEBOOK

- The Princess needs to be rescued.
- Garland has kidnapped the Princess and hides to the Northwest in the Temple of Fiends.
- The Treasury is locked and the Elf Prince holds the Key.

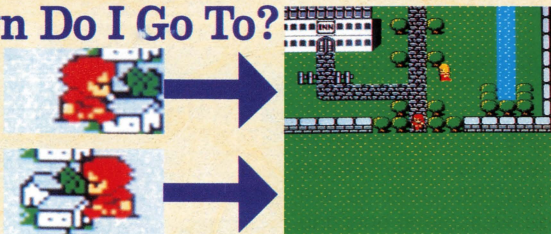
Outfit Your Trek In Coneria

Just outside the castle walls lies the town of Coneria. Called the Dream City, it will become the base of your travels on your quest to save the Princess.



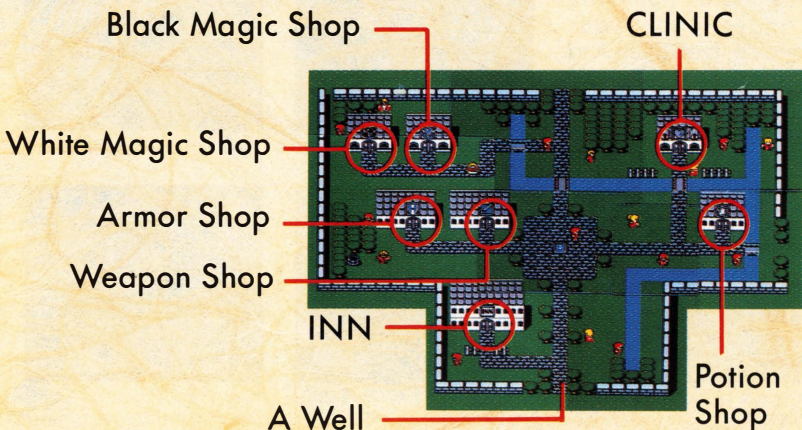
Which Town Do I Go To?

Although what you see looks like six different villages before you, it doesn't matter which you enter. They are all the same.



CONERIA

Inside Coneria you will find more people who will assist you on your quest. For guidance, talk to everyone. Visit the shops to buy the tools and magic you will need to defeat your enemies. The INN and CLINIC will heal your battle wounds and casualties.



BUY WEAPONS

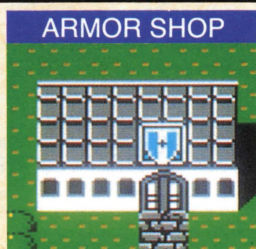
While in Shops or INNS, the keeper will direct you to the choices available to you. Using the + Control Pad, point the 'finger' to your chosen action, then press A. Pressing B will withdraw your last selection.



A Call To Arms

PURCHASE YOUR IMPLEMENTS OF DESTRUCTION

There are different types of stores in each town. The stock and prices at each shop will vary as you move to each new town or village. Some items will be available at only one particular shop.

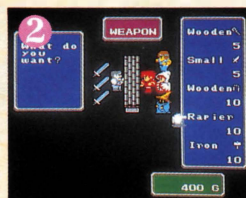


THE WEAPON SHOP

Each storekeeper will guide your visit to his store. Point the 'finger' to your choice, then push A to execute. Make as many purchases as you wish before exiting. Push B to cancel.



Welcome to my shop. You wish to make a purchase?



You'd like to buy a rapier?



It costs 10 Gold, do you still want it?



Who will carry this fine weapon?



Your transaction is completed. Is there anything else?

SELL SURPLUS WEAPONS

Your journey to new towns, and the exploration of dungeons, will allow you to find more effective weapons. Each Warrior is able to carry up to four weapons at a time. When a Warrior's inventory becomes full you should sell your surplus weapons.



Select SELL, choose who will sell an item and press the A Button.



Next, choose which item you would like to SELL.



The shopkeeper will make you an offer. Select YES to accept it.

Key To On Screen Symbols

Weapon

	Staff
	Dagger
	Nunchuck
	Hammer
	Sword
	Axe

Armor

	Armor
	Shield
	Bracelet
	Helmet
	Gauntlet

Each character uses different weapons. Some characters can't use certain weapons. This list shows which weapons to purchase first.

Character Types	Weapon	Armor
Fighter	Rapier	Chain
Thief	Rapier	Wooden
Black Belt	Wooden	Wooden
Red Mage	Rapier	Chain
White Mage	Iron	Cloth
Black Mage	Small	Cloth

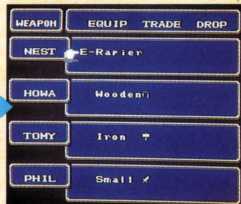
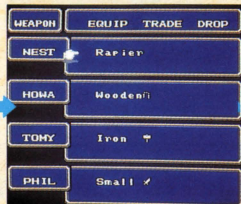
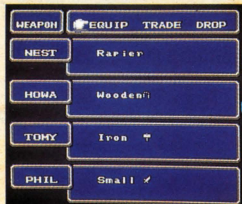
EQUIPPING WEAPONS AND ARMOR

Before you go out of the town, you will need to EQUIP yourself with the weapons and armor that you have purchased. If you don't, you may find yourself face to face with a group of enemies with nothing but your hands to protect you.



EQUIP

To EQUIP your weapons and armor you first need to go to the MENU screen. To do this, press the START button, Move the 'finger' to where it says WEAPON and press the A Button. Then follow the directions below.



With the 'finger' on EQUIP, press the A Button.

Put the 'finger' in front of the weapon you wish to hold and press A.

An 'E' will appear next to the item that has been equipped.

TRADE

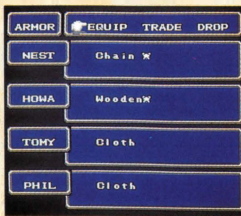
If you would like to give a weapon or armor from one character to another, use the TRADE command. Use the A Button to pick up an object, move it and press A again.

DROP

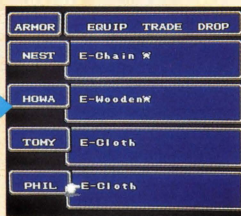
The DROP command simply drops the object that you indicate.

EQUIP ARMOR THE SAME AS WEAPONS

Equipping armor is done the same way as weapons except that you move the 'finger' on the menu screen to ARMOR instead of WEAPON. Always remember that each character can only carry four weapons and four kinds of armor.



Put the 'finger' on EQUIP and press the A Button.



Select the armor you wish to wear and push the A Button again.

THE MENU SCREEN

These are the Four Orbs that you must restore.

GOLD

Options that you may select.



Here are the four Light Warriors. Each block contains a lot of vital information.

Press the START Button to get to this screen!

This area shows how many spells of each level this warrior can use.



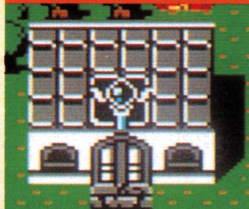
WARRIOR'S NAME
WARRIOR'S LEVEL
WARRIOR'S HP
(actual/maximum)

BUY MAGIC

Magic is a very important part of Final Fantasy. There are two types of magic — White and Black. Magic level is not the same as Experience Level. For example, if you are at level 4 Experience,

you won't necessarily be able to cast level 4 spells. As you gain more experience, the higher level spells will become available for use.

BLACK MAGIC SHOP



WHITE MAGIC SHOP



Here is the Black Magic FIRE spell in action.



The White Magic CURE spell being used to help a comrade.

White Magic is usually used for defense and for healing purposes. Black Magic tends to be more destructive in nature. It's often used while attacking.

BUYING WHITE AND BLACK MAGIC

In the towns you will find two kinds of magic shops. Different characters will be able to learn different kinds of magic.



Selecting the character to learn the spell.



The list of spells sold in this shop.

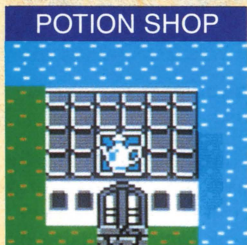


This message appears if the character cannot learn the spell.

MAGIC LEVEL AND EXPERIENCE

At the start of the game you will only be able to learn level 1 spells. As your magic users gain experience, they will be able to purchase higher level spells. The most useful level 1 spells are CURE (White Magic) and FIRE or SLEP (Black Magic). Be sure that you obtain these if you can. Each magic user can learn up to 3 spells for each spell level.

If you have enough money, BUY POTIONS!



items are available here. If you don't have very much money it is wise to return as soon as you have the necessary funds. Remember that different shops sell different goods.



Here is a list of items available for sale at this Potions Shop.

THE ITEMS

Here is a listing of the items that you can buy at Potion Shops as well as what they can do for you.

HEAL ☼ (Potion)

Extracted from a rare tree. It restores HP. You can use it during a fight or while travelling.



PURE ☼ (Potion)

This potion will cure you if you are poisoned by an enemy.



SOFT ☼ (Potion)

This potion will restore to life any character turned to stone by an enemy spell. It works instantly, but you can't use it during a battle.



TENT

A magic TENT that you can keep in your pocket. It can be used to SAVE your game and to recover some valuable hit points (HP).



CABIN

A CABIN that works similar to the TENT. It SAVES your game data and recovers more hit points than the TENT.



HOUSE

Even better than the CABIN, the HOUSE will allow you to SAVE your game and recover a lot of hit points (HP) and magic power (MP).

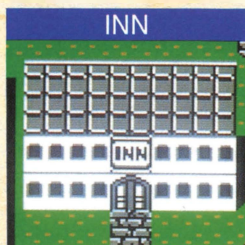


Saving your game at

THE INNS — VERY IMPORTANT!

Staying at an INN will SAVE your game. Your hit points (HP) and magic power (MP) will return to maximum also. The Inn-keeper will always remind you to press and

hold the RESET button on your NES while you turn the power off to ensure that your quest is retained in Final Fantasy's battery backed memory.

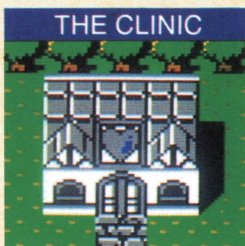


To Save your data, put the 'finger' in front of YES and press the A Button.

The CLINIC

A PLACE TO REVIVE THE DEAD

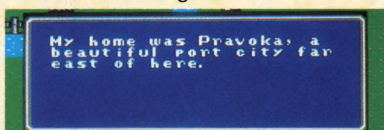
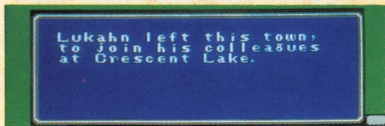
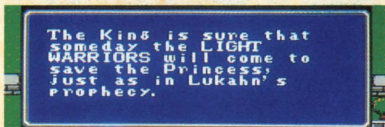
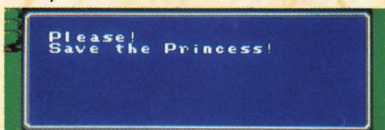
If you lose any of your characters during a fight, you can go to a CLINIC to have them revived — for a cost. The price of being revived varies from town to town. NOTE: A newly revived character will have HP of 1. Be sure to go to an INN before you continue.



Getting revived!

DON'T MISS ANY INFORMATION!

In the towns, you will find many people to talk to. Remember to talk to everyone and be aware that sometimes their stories change!



Try speaking with things other than people. You never know what you'll find.

NOTEBOOK

- The Princess needs to be saved.
- Pravoka, a city to the east, has a port.
- Lukahn, who prophesied your coming, has left for Crescent Lake.

Journey To The Temple of Fiends

No one knows why this place was named The Temple of Fiends. Only the bravest of warriors have gone near and none of them have returned! Garland hides here with the kidnapped Princess Sara.

Your Destination

DON'T GO UNPREPARED

Garland is a very tough enemy. You must be very serious about your preparation prior to meeting him. Before heading here buy several HEAL potions.



This party was unprepared, and A Geist has made short work of them. "Life-up" before entering dangerous places.

LINING UP TO BATTLE

Your party of four always lines up vertically to fight or travel. The leader (character at top of line-up) is more exposed to the enemy attack. You should use a character with the best ability (usually defense) for this position. To change your line-up, press SELECT, point to a character, then press A. Point out the replacement and press A again. After the replacement takes place, another can be made. Press B to exit this screen.



ON TO BATTLE

When you encounter an enemy while traveling, the screen will flash and the Battle Screen will appear. Then enter a command for each of your four characters. After these commands have been entered, the battle will begin. Now watch as your party executes their orders. Continue until the battle is over (either the enemy or you are completely defeated or you successfully RUN). Then press the A Button to see how much Gold and Experience you will obtain.

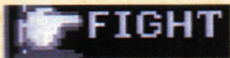


When you win a battle, you gain Gold and Experience.

THE BATTLE SCREEN



BATTLE COMMANDS



When you enter a battle situation, you should first look to see if you are greatly overpowered. If you see that the enemies are too powerful for you to defeat, it is to your advantage to choose the RUN command. Otherwise, select FIGHT with the A Button to attack. After you choose FIGHT, you must also choose which enemy you will hit.



Move the 'finger' with the **+** Control Pad and press the A Button to select which enemy to FIGHT.

This is what you see while your characters are battling.

MAGIC

To use a magic spell during a fight, select MAGIC and press the A Button. A subscreen will appear with a list of your magic spells. Use the **+** Control Pad to choose a spell and press the A Button. Depending on the spell, you may need to choose which enemy to use it on (some spells will affect all enemies on the screen). Some types of magic are not for attack — some will protect or heal your party. You may have to choose who in your party to affect.



This is the MAGIC subscreen. The number on the right of the subscreen tells you how many spells you have left.



Selecting the enemy to use the magic on.



Choosing to use a spell on another person in the party.

DRINK

During a battle, the DRINK command is used to consume a PURE or HEAL potion. Keep in mind that you will not be able to attack while you are taking a drink!



Drinking a much needed HEAL potion during a battle.

ITEM

The ITEM command allows you to use an ITEM during a battle. Selecting an ITEM works the same way as the DRINK command. You will not be able to FIGHT while you are using an ITEM.



Select the ITEM desired and press A to execute.

RUN

If you are overpowered, you can try to RUN. There is no guarantee that your escape will be successful — it depends on your agility level.



He who RUNS away, lives to FIGHT another day!

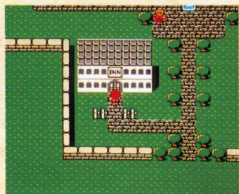
WAYS TO RESTORE YOUR HP AND MP

If your character's HP gets very low, your character will begin to look weak. You need to get their HP up quick! Here are different methods of raising your HP.



1) STAY AT AN INN

Staying at an INN is the most efficient way to recover HP and MP. Both your HP and MP will be restored to their maximum levels. Your game will be SAVED too.



Look for the INN sign in any town.



Once inside, the Innkeeper will greet you.

2) TENTS, CABINS AND HOUSES

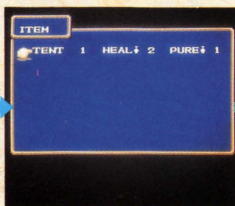
Using a TENT, CABIN, or HOUSE is a very convenient way to SAVE your game. A big advantage is that you do not have to find a town to use them. All of these items have been shrunk down to a very small size so that you can store them in your pocket. This means that you can carry up to 99 of each. When you use one, it magically enlarges to normal size. You cannot use them inside of a dungeon.



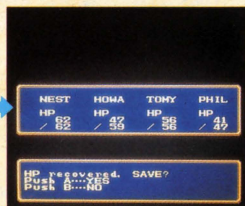
This looks like a good place to camp!



Press START to bring up the MENU screen, then select ITEM.



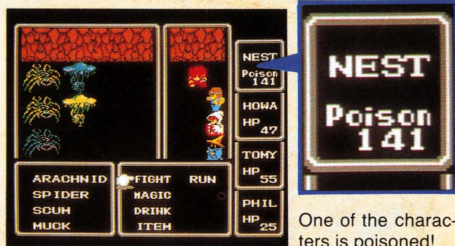
Choose TENT and press the A Button.



Push the A Button if you want to SAVE your game.

3) USING POTIONS

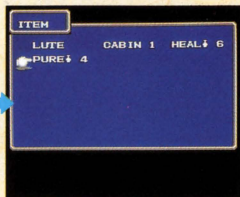
Utilizing a HEAL potion is another way to regain lost HP. The PURE potion is very important too. If one of your characters is poisoned, PURE will 'purify' their system. An advantage to potions is that you can use them during battle.



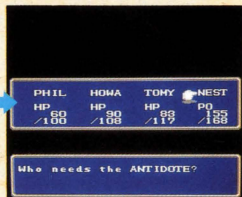
One of the characters is poisoned!



Press START to go to the MENU Screen, select ITEM and press the A Button.



On the ITEM Screen move the 'finger' to PURE and press A.



Move the 'finger' to the person that you wish to use the potion on.

4) USING MAGIC

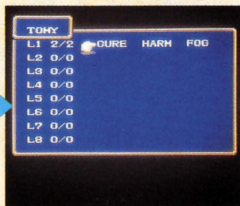
There are many types of magic that can be used to raise a character's HP. The first spell of this type is the CURE spell (White Magic). Magic is very versatile — you can use it while in battle, or during travel. Of course, higher level magic spells are going to restore more HP than low level ones.



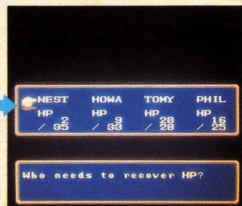
During travel, select M A G I C from the M E N U screen and press A.



Then select which character's magic you would like to use and press A.



Choose the desired spell and enter it by pressing the A Button.



On this screen, you can select who you wish to use the spell on.

THE CLINIC CAN REVIVE A SLAIN ALLY

An adventure party that loses an ally in battle should not fear the temporary loss. In most towns a CLINIC can be found. Inside, you will find a Magician of Life. For a fee he will revive any of your allies slain in battle.



The Magician asks you to select the candidate for revival.



Your band of Light Warriors returns to a full staff.



REMEMBER!! After revival, your HP is only 1!

LET'S GO SHOPPING!

When you return to town, or journey to new ones, you should go shopping. You should learn new and different magic spells, and stock up on potions and TENTS. Don't forget to upgrade your weapons and armor. As you enter new areas you will encounter more and more ferocious monsters. To quickly eliminate your foes and protect yourself, you must constantly spend your hard earned Gold.



So many shops, with such great things to buy. Start with any of them.

STATUS SCREEN

CLASS

NAME

ATTRIBUTE LEVELS

STRENGTH & AGILITY LEVELS

NEST	FIGHTER	LEV 2
EXP. POINTS FOR LEV UP		49 / 150
STR. 21	DAMAGE 19	
AGL. 6	HIT % 18	
INT. 1	ABSORB 15	
VIT. 11	EVASD % 99	
LUCK 5		

EXPERIENCE LEVEL

EXPERIENCE POINT TOTAL

EXPERIENCE POINTS NEEDED TO ADVANCE LEVELS

STATUS

On the STATUS Screen you will find valuable information for making many decisions. Knowing how many Experience Points you need for the next level is quite valuable in determining whether to return to town or continue battling.

Each class of Light Warrior has different characteristics than the others. The attributes of that class, in combination with the Experience Levels and currently EQUIPPed weapons and armor, contribute to the status of a Warrior.

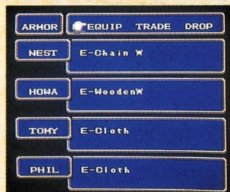
Use the strength and agility levels to help in your determination of what weapons and armor to EQUIP. Higher numbers are more desirable.

BEFORE VISITING GARLAND

You must take a short journey to the Temple of Fiends to confront Garland. Before heading out, review a few points that should become a standard precaution before leaving any civilized area. This will insure the easiest journey possible.



WEAPONS AND ARMOR



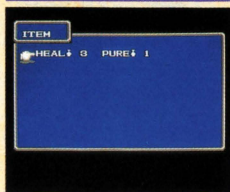
Make sure that all of the weapons and armor you wish to have with you in battle are EQUIPPed. The fanciest sword or shiniest armor will do no good in the heat of battle, unless it has been EQUIPPed.

BATTLE



On the journey, many monsters will attempt to stop you. Fight through, or attempt to RUN from the enemies that block the path to your destination. Battle to gain Gold and Experience.

ITEMS



It is quite wise to take provisions. Being able to restore your life during your journey, or even in battle, is important. A poisoned ally cannot survive long without some antidote (PURE).

SAVE YOUR GAME



After making all other preparations, it is a very good idea to SAVE before leaving town. If you are unsuccessful on your mission you can restart from here.

PLAN YOUR BATTLE WISELY

GOOD EXAMPLE 1



The enemy party may be made up of several different monsters. Eliminate first the monsters that pose the greatest threat.

If the Grey Wolf survives longer he can inflict more damage than the weaker enemies.

Next concentrate on the Grey Imps, before working on the Imps.

GOOD EXAMPLE 2



Conserve your spells wisely by being aware of your enemies' maximum HP and how much damage can be inflicted by your allies.

The use of the ICE spell has inflicted 33 HP of damage to the Ogre.

In round 2 of this battle, another spell is not needed to terminate this Ogre.

GOOD EXAMPLE 3



Battle with the Sahags has taken a toll on poor HOWA. Choose the Warrior with the highest agility to give the HEAL potion.

To minimize the unwise use of a potion, the Warrior that risks being slain should choose to fight.

PHIL saves the day with a much needed HEAL to restore some HP to the weakened HOWA.

While engaged in battle it is always wisest to plan ahead. Wise battle tactics will minimize the damage to your party. Unwise battle practices will lead you to the CLINIC.

BAD EXAMPLE 1



A party this weak should never try to fight two Ogres.



28 HP of damage. They can't last all that long, can they?



Here Lies NEST's party — R.I.P.

BAD EXAMPLE 2



Know how much to attack each individual enemy.



Multiple attacks on weak, or weakened enemies do no good.



Continuing to fight a defeated enemy is ineffective.

BAD EXAMPLE 3



The defensive power of the leader of your party is very important.



The leader will receive the brunt of the enemies' attack.



PHIL has been slain. TOMY and the rest of the party RUN for their lives.

BATTLE TECHNIQUES

1 RUN AS A STRATEGY

Even if you elect to, there is no guarantee that you can safely RUN away from the enemy. Each character's agility, regardless of enemy or ally, dictates the order of execution. Be aware that the enemy might hurt you before you RUN away.



RUNning away from enemies while weak, can be a smart thing to do.

2 KNOW THE ENEMIES' WEAK POINTS

In order to survive battles and gain large amounts of Gold and Experience, stopping to analyze your enemies' weak points will bring you success. You must experiment to find the most effective ways to use your magic and weapons. Many strong enemies have a weak point that you should exploit to your best advantage.



Use magic spells from the Lightning (LIT) category while fighting in, or under water.



Weapons and magic of the ICE category are most effective against enemies using and made of FIRE.



HARM is effective against Undead monsters, such as ghosts, zombies, and other non-living enemies.

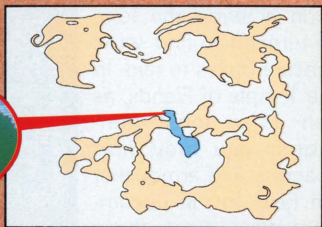
3 USING ITEMS DURING BATTLE

ITEMs can be useful while in a battle. One advantage is that you can use an ITEM that is not EQUIPPed. Often this item will be used on all enemies or on your entire party.



Using an ITEM while engaged in battle.

Rescue the Princess at The Temple of Fiends



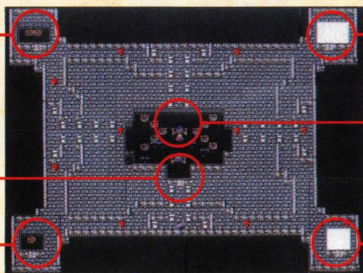
Garland holds Princess Sara captive at The Temple of Fiends. This

much was told to you by that guard in Coneria. Beware as you journey to free her. No one has been seen leaving the temple in over 400 years.

THE TEMPLE OF FIENDS

Seated on the throne in the middle is Garland. He does not fear your coming, and waits to battle.

A TREASURE BOX



LOCKED DOOR

PRINCESS SARA

GARLAND

A TREASURE BOX

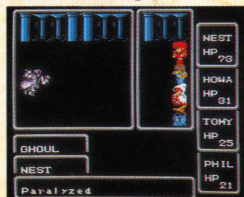
LOCKED DOOR

BEWARE OF FEROCIOUS ENEMIES

The enemies that you run into here are quite strong. Be sure to watch your HP very closely. Use HEAL potions if you need to.



A large group of wicked wolves. Look out!

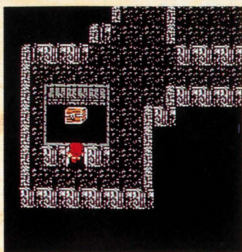


Ghouls have the capability to paralyze members of your party.

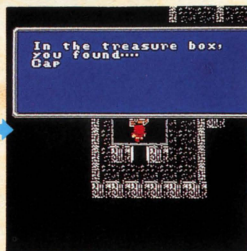
Prepare your Party

HEAD WEST YOUNG WARRIORS

Upon entering the temple turn left to find some Treasure Boxes to raid. In The Temple of Fiends, as well as in most dungeons, you may find weapons and armor that can help you in upcoming battles. Seek these out and use them to your best advantage.



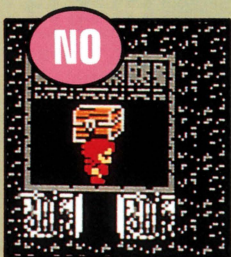
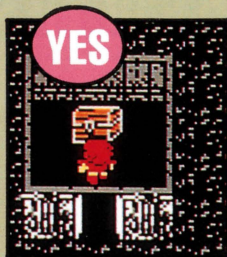
Enter the door to find a Treasure Box.



Opening the box you find a CAP!

OPENING TREASURE BOXES

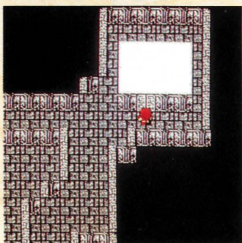
In order to obtain the contents of a Treasure Box, you must first open it. Facing towards the box, press A. If you do not squarely face the box, it cannot be opened.



Inside the Temple

LOCKED DOORS

While exploring, if you find a door which can't be entered, try pushing A to investigate. Many times you will be told that the door requires the mystic KEY to enter. When you have the mystic KEY, the doors will open automatically.



Pushing against the door doesn't gain entry for you.

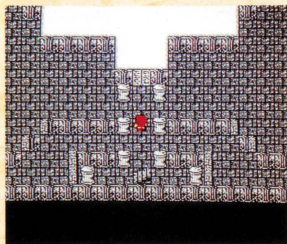


Press A to find the door is locked with the mystic KEY.

Be Courageous

GET READY TO RUMBLE!

Garland waits upon his throne in the center of the temple. He does not fear anyone who walks through his door, least of all four youths who think that they are the Light Warriors. Garland has no fear of you, so do not take lightly your preparations prior to doing battle with him. Fully prepare, and you may win!



After entering the door to the Throne Room, stop to restore your HP.



After doing so, proceed towards Garland, and try to reason with him.



Unfortunately, Garland doesn't want to negotiate.



All Warriors should choose to FIGHT. Magic users should use MAGIC.

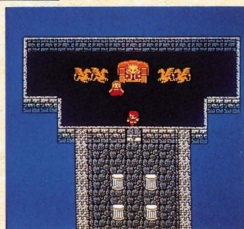
Good Job!

THE PRINCESS IS FREE!

The battle with Garland is done. Most likely you will have suffered greatly and perhaps lost one of your party. Walk forward to talk to the Princess. After she finishes press A again to warp to Castle Coneria.



Talk to the grateful Princess.



Pressing A again warps you back to see the King in Castle Coneria.

Meanwhile, Back in Coneria

After successfully defeating Garland, make sure to talk to the Princess repeatedly. After thanking you for saving her, if you press A again you will be warped back to the Throne Room of Castle Coneria. Here, the King will reward the Light Warriors.

A ROYAL REWARD

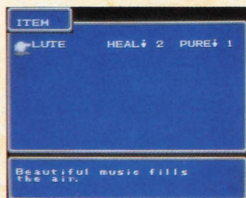
The King, happy to see his daughter safe again, cheerfully orders a bridge built to the main continent. Princess Sara, also wishing to help out the Light Warriors, gives you the LUTE. Both of them do this in fulfillment of Lukahn's prophecy.



The King has ordered the building of the North Bridge.



Sara gives you her mother's LUTE.



Certainly this will do more than play music.

TALK, TALK, TALK!!!

Make sure to talk to everyone present in the castle again to receive new clues. Keep talking until their conversation no longer changes.



The King sends you on your way.



Return to find that the Princess is concerned.

TALK TO EVERYONE ELSE TOO!

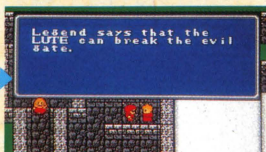
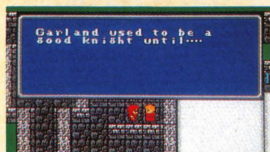
As you find items and accomplish your goals, the people will give you new clues. Write these down in a notebook to help guide your quest. In the event that you cannot determine what actions to take, always go back and talk to everyone again to find any clues that you have forgotten or missed.

Before

After



After you have rescued her sister, she is very happy.



The Scholar who was concerned about Garland knows the LUTE has a purpose.



This woman's concern has shifted to Matoya, the victim of a crime.



Maybe you should go north to Matoya, the townspeople seem concerned about her now.

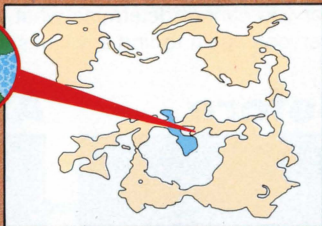
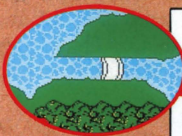
NOTEBOOK

- The King had a bridge built.
- The Princess gave you her LUTE.
- The LUTE can break the evil gate.
- Matoya, a witch who lives to the north, needs the CRYSTAL.

To The North Bridge

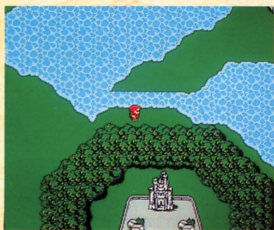
Up until now, your world has been very small. It has consisted of Coneria, The Temple of Fiends, and the path between the two.

With the new North Bridge, your world has just expanded.



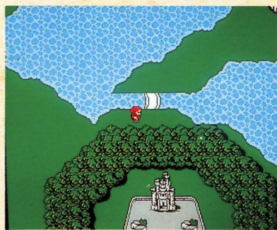
THE KING FULFILLS HIS PROPHECY

As your reward for the rescue of his daughter, the King has built this bridge.



Before

Before the rescue there is no way to cross!



After

The King's men work fast, the bridge was built, just as he said.

BACK TO THE TEMPLE?

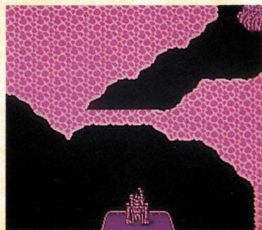
Back at the Temple of Fiends, you will find a mysterious black Orb sitting in Garland's former throne room. This orb seems quite similar to the darkened orbs that you carry. However, this orb is not black with the lack of internal light, it radiates its blackness from within.



The black Orb cannot be attacked.

CROSS THE NORTH BRIDGE

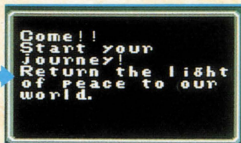
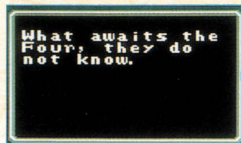
Crossing the North Bridge ends the prologue of this story. Sit back and enjoy the opening credits of Final Fantasy. Carefully read the story, it is your story, for this is your Final Fantasy.



As you begin walking across the North Bridge, it seems that a battle is going to take place.



The title screen appears, read the story.



YOUR FINAL FANTASY HAS BEGUN

Now your adventure truly begins. If you are not satisfied with some aspect of your party it is not too late to restart. The amount of time that you have invested to this point is quite minimal compared to the total time that you will spend in completing this adventure.



Choosing a NEW GAME now will erase your old data.

HOW TO ORGANIZE AN ADVENTURE PARTY

How you organize your party in Final Fantasy is entirely up to you. Make it up any way you like, it cannot be wrong. The game will require different strategies depending on who is in your party.

1 SELECTING YOUR CHARACTERS

To start your Final Fantasy, select NEW GAME when you turn it on. A screen showing your Four Warriors will appear. Starting with the character in the upper left, you can change the occupations by using the + Control Pad. There are six different occupations to choose from. Press the A Button when the occupation you want is shown.



Then the name entering screen will be shown. Name your character (up to four letters) by using the + Control Pad and the A Button. If the name you wish to use is less than four letters long, use the 'space' located below the 'T'.

After entering the fourth letter in the character name, the screen will return to where the four warriors are shown. The occupation selection and naming process then proceeds with the upper right character. This continues until all characters are chosen and named.



2 CHARACTER OCCUPATIONS

Each of the Four Warriors in your party must have an occupation. Here is some useful information to help you choose.

FIGHTER

A professional fighter trained in the use of all weapons. The Fighter is able to wear heavy armor and is skillful with large swords. Even with this bulky equipment, quick moves are still possible.



THIEF

Agility and dexterity are the strong points of this character. The Thief is good to have when you need to avoid an attack from the enemy.



BLACK BELT (Bl. BELT)

A master of martial arts. Tough both mentally and physically. This Warrior can fight effectively with bare hands (no weapons equipped).



RED MAGE

The Red Magician has the ability to learn some of both black and white magic spells and is a fairly good fighter.



WHITE MAGE (Wh. MAGE)

Using White Magic, this character can heal wounds and cast many defensive spells. The White Magician is not a very good fighter, but can learn powerful magic.



BLACK MAGE (Bl. MAGE)

This character is skilled with Black Magic — very powerful spells used to attack the enemy.



ADVENTURE PARTY EXAMPLES

Your game's course of development will differ depending on the combination of your party. Make it up any way you like, it cannot be wrong. Below are suggested party combinations, and some good and bad points of each.

1 FOR THE BEGINNER

This combination works very well together. It is balanced and is highly recommended. The battle skills of the Fighter and the Black Belt combine effectively with the magic supplied by the White and Black Mages.



2 DEFAULT PARTY

This is the party that you will use if you do not change the selections. It is a balanced party also and will do quite well. Although it is somewhat weak in the magic department, the fighting skills of the party will more than make up for that.



3 AN ALTERNATE CHOICE

This combination is quite different than the previous two. While not recommended for those who are inexperienced, the veteran player should have a lot of fun with this one. The money saved by not having to buy expensive weapons and armor can be used for powerful magic and potions.



4 MAGIC USERS

The lone Fighter's place in this party is not just that of offensive attack. His other purpose, with the help of the White Mage's powers, will protect the Red and Black Mages and allow the destructive power of their magic to defeat the enemies.



5 HEAVY MAGIC USE

You must like magic to use this party. In the beginning, many trips will be spent returning to town for revival. If you could purchase HEAL potion by the barrel you would do so. When this party becomes experienced, the quantity and types of magic spells that can be brought into battle is formidable.



6 POWERFUL FIGHTING

When this party goes into battle it is strong and quite menacing. It will be quite expensive to outfit this party with weapons and armor. The Gold saved at the Magic Shop will be wisely used buying potions. Until this party reaches class change (see page 75) it will not have the benefit of magic.



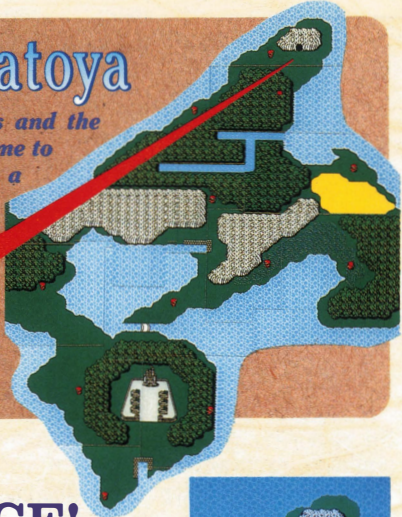
MORE PROS AND CONS

The course of your game's development will depend upon the make-up of your party. Enjoy the development of your Final Fantasy, the combination of characters is your own making. There are over 100 different character combinations possible. Some parties will be much easier to develop than others.

The Cave of Matoya

After you've rescued the princess and the North Bridge has been built, it's time to go to the Cave of Matoya. Matoya, a friendly witch, lives here.

Entrance!



LOOK FOR THE ENTRANCE!

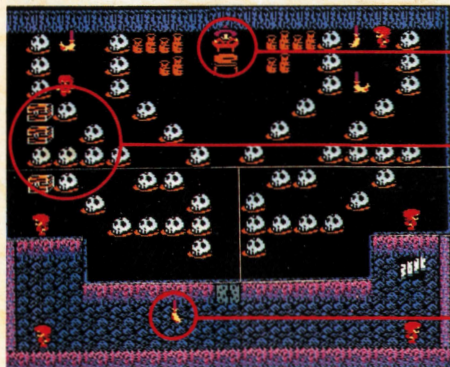
The entrance to the Cave of Matoya is north of the North Bridge. Refer to the map above.

This is the cave. Go visit Matoya!



THE CAVE OF MATOYA

Here is what you will find inside the cave. Right after you enter, look for a door and go through it. Then search the area. (Tip: You can walk over the skulls!)



MATOYA

TREASURE
BOXES

A BROOM

Talk to the Witch

REMEMBER MATOYA'S NEEDS

If you search the entire cave, you will probably find Matoya the witch. (If you're having trouble finding her, she's up at the top of the cave.) Talk to her and find out what she needs.

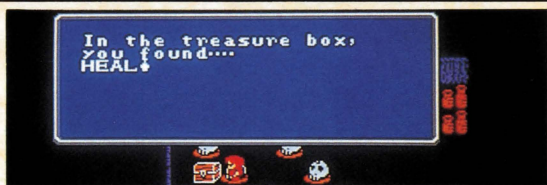


After you enter the door, go up as far as you can. Find Matoya and talk to her. Remember what she says. It is wise to write down anything that you think is important!

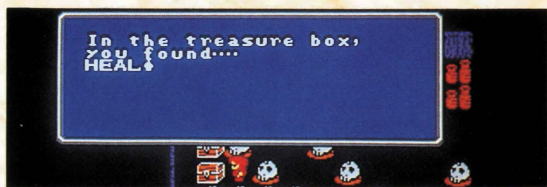
Look Everywhere

EXAMINE THE TREASURE BOXES

On the far left side of the cave, you will find three Treasure Boxes. To open them, act as if you were talking to one of them – stand facing one and press the A Button. Your party will automatically receive the box's contents.



Open this box to obtain a HEAL potion.



Another HEAL potion!



Here you will find a PURE potion.

A Special Spell

WHAT IS TCELES B HSUP?

When exploring an area, you should examine everything. Even if it seems silly! For instance, in the Cave of Matoya, you can talk to the brooms. They give you a very useful piece of information.

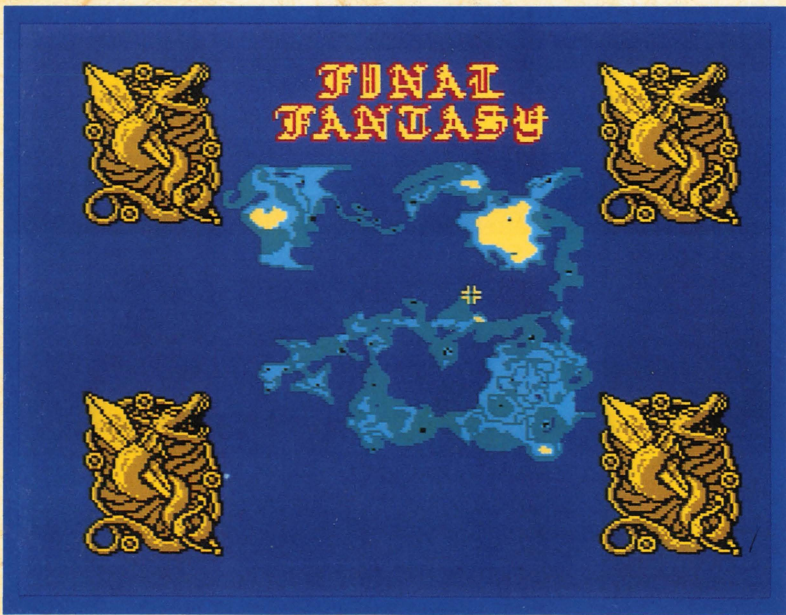


Talking to a broom?!? It's been said that brooms can talk BACKWARDS. The brooms hold a secret!

THE ANSWER

THE SPELL TO BRING UP THE OVERWORLD MAP!

If you read the broom's text backwards, it says PUSH B SELECT. Go outside the cave. Push and hold the B Button and press SELECT. The Overworld Map appears. Amazing! You've solved one of the riddles embedded in Final Fantasy!



Pushing B and SELECT brings up the Overworld Map. The little flashing dots are towns or places of great importance. Be sure to visit ALL of them. The flashing 'cross' is your location. This world is HUGE!

Go To Pravoka!

In the town of Coneria, you may have spoken with a boy talking about Pravoka, a town to the east. This is your next destination. Here, you will be able to get a SHIP that will enable you to travel on the open seas.

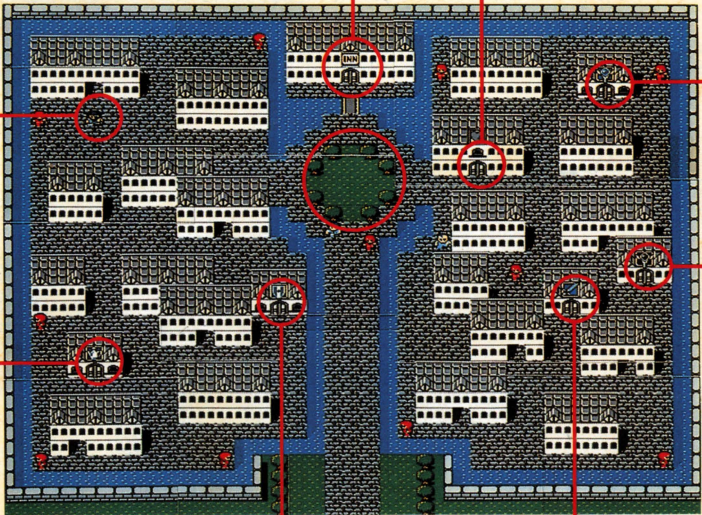


TOWN OF PRAVOKA

The town of Pravoka has been under siege by pirates. Explore the town and find out what's going on!

BIKKE THE PIRATE

WHITE MAGIC SHOP
INN CLINIC



POTION SHOP
ARMOR SHOP

WEAPON SHOP

BLACK MAGIC SHOP

Explore Everywhere

TALK TO THE TOWNSPEOPLE

Pirates have taken over the town of Pravoka. Talk with all of the townspeople and see if you can gather more information. **DON'T** talk to the pirates yet!



The people of the town cry for help!

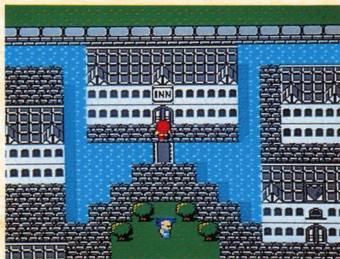


A man with a blue mohawk provides information.

Spend the Night

SAVE AT THE INN

Before you battle it out with the pirates, go to the INN to **SAVE** your game and recharge your HP. Another great reason to **SAVE** here is that if you should lose to the pirates in this town, you can **CONTINUE** your game from here instead of travelling all the way from Coneria. It pays to **SAVE**!

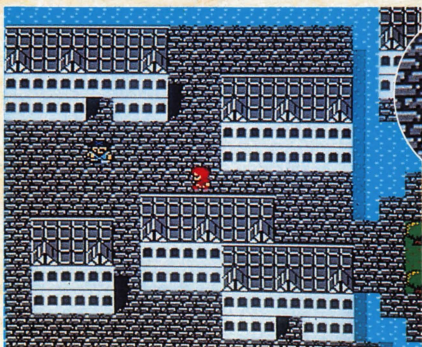


The INN in Pravoka is found at the top of the town, in the center.

Get Ready

DEFEAT BIKKE THE PIRATE!

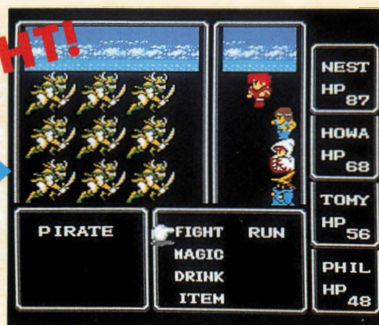
In Pravoka, you will find Bikke the Pirate. Talk to him and his crew will challenge you to a fight. After you defeat them (hopefully you are strong enough), talk to Bikke again. Since you have beaten his crew, he will give you his **SHIP**.



Aye Mates. It's Bikke the Pirate!



Bikke orders his crew to attack!



9 pirates? Think fast!



The pirates have been defeated.



The humbled Bikke gives you his SHIP. Now you can sail the high seas (but not the rivers, yet).

WHY CAN'T I DEFEAT THE PIRATES?

If you're having trouble defeating the pirates, here are a few tips. 1) Spread out your attack: Don't have all of your characters attack the same pirate. Have everyone attack someone different. 2) Use the sleep spell: If you have the sleep (SLEP) spell, use it! It works great!



Use the sleep (SLEP) spell to put those big burly pirates away.

Don't concentrate on one pirate. Spread out your attack.

LEAVE PRAVOKA TO FIND YOUR SHIP!

Leave the town of Pravoka (you should probably go to the INN to SAVE your game first). You will see your SHIP docked at the port. To board it, just walk on to it. You will notice that the SHIP moves a lot faster than you can walk. Note that you can only go ashore where there is a port.



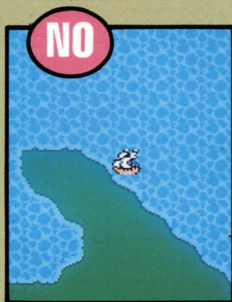
Your new SHIP is waiting for you. Let's go sailing!

This SHIP really cruises!



GET READY FOR OCEAN TRAVEL

Your SHIP can only be docked at a port (shown with white bricks). You will have to do some exploring to find all of them. Most importantly, REMEMBER WHERE YOU'VE DOCKED YOUR SHIP! It's very easy to lose track of where you got out of the water.



ENEMIES OF THE DEEP

The ocean is no easy ride. There are many monsters out here that would just love to mess up your trip. Here are some of the creatures that you will meet in the sea.

SHARK



EYE



SAHAG



KYZOKU



THE PEOPLE OF PRAVOKA COME OUT!

After you defeat the pirates in Pravoka, the people that were afraid to step out of their houses are now free to come out. Be sure to talk to all of them!



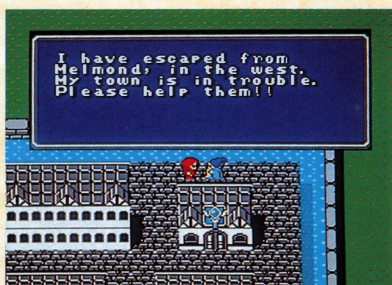
The citizens of Pravoka are relieved!



Aha! A clue to go find the Elves across the sea.



Useful information from the townsfolk.



Another clue! The people in Melmond need your help.

BUY WEAPONS, ARMOR, AND LEVEL 2 MAGIC

In Pravoka, there are some great shops. The Weapons Shop and the Armor Shop are selling things that you couldn't get back in Coneria. Remember to EQUIP the items that you buy. Also pick up some level 2 magic. If you don't have enough money, go out and fight for some more Gold!

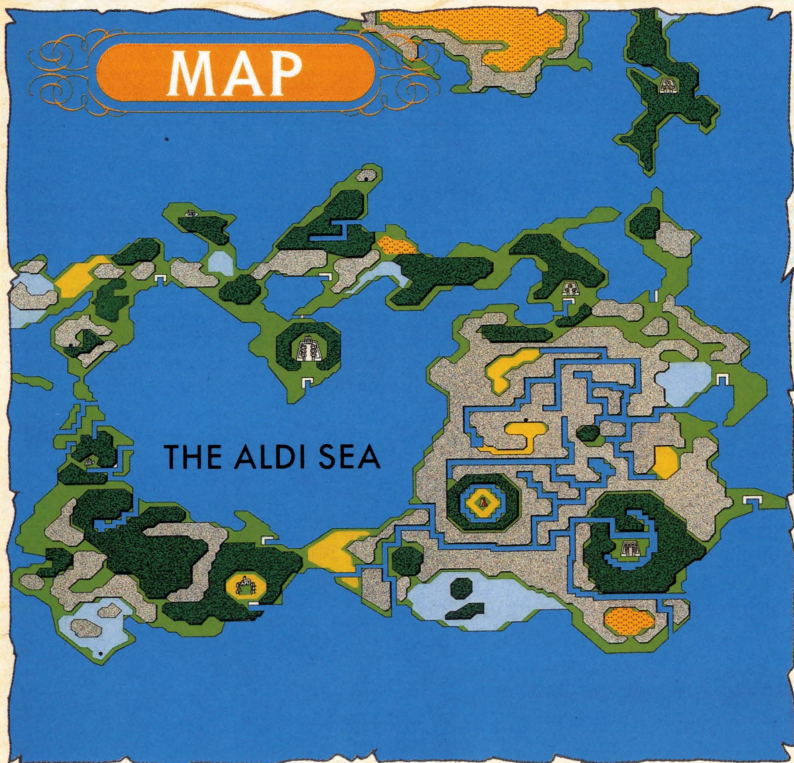
WHITE MAGIC	BLACK MAGIC	WEAPONS	ARMOR
LAMP	ICE	Iron ⚔	Wooden ⚔
L2 400	L2 400	10	50
MUTE	DARK	Short ⚔	Chain ⚔
L2 400	L2 400	550	80
ALIT	TMPR	Hand ⚔	Iron ⚔
L2 400	L2 400	550	800
INVS	SLOW	Scimitar	Wooden ⚔
L2 400	L2 400	200	15
			Gloves
			60

NOTEBOOK

- The Elves live beyond the sea.
- Their Prince is asleep.
- The town of Melmond is West of Pravoka.
- Melmond is under attack.

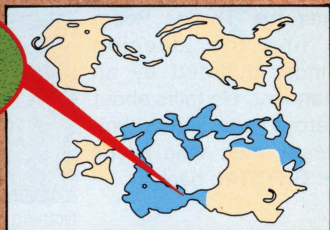
YOUR WORLD EXPANDS!

Now that you have the SHIP, you can explore a lot of new places. It's time to do some serious exploring. Sail everywhere you can and look for ports and new towns. SAVE your game before you leave, just in case. Remember to look at the World Map (B and SELECT) often to see where you are.



The Castle of Elf

South of Coneria, across the Aldi Sea lies ElfLand. The good Elves are in danger of losing their kingdom to the leader of the dark Elves, Astos.



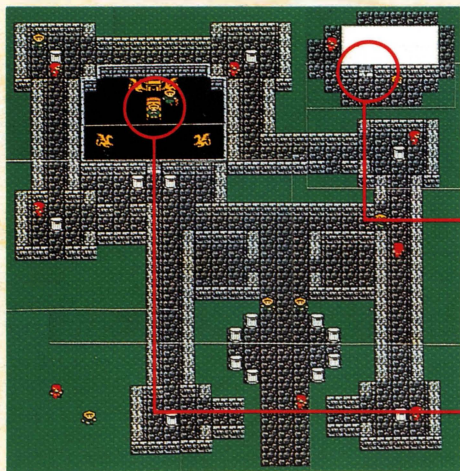
TRAVEL CROSS COUNTRY FROM THE PORT

Sail due south of Coneria until you reach the coastline. As you approach this coast, turn and head west to find ElfLand's northern port.



CASTLE OF ELF

Five years ago, Astos led a raiding party of dark Elves on this castle. Unable to find the CROWN, he placed the Prince under a sleeping spell.



THE TREASURY

THE PRINCE

Shhhhhh. Be Quiet

THE PRINCE SLEEPS

Enter the Throne Room to find the sleeping Prince, guarded by an attendant. He talks about Matoya, the witch you already met, who needs her CRYSTAL back.



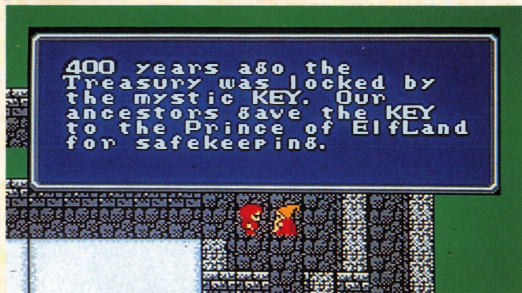
Nothing will wake this sleepy head!



If only you could find that witch's CRYSTAL!

DO YOU REMEMBER?

While exploring the Castle Coneria, the Sages you found outside the Treasury informed you that the Prince of ElfLand was given the mystic KEY.



You must wake the Prince to get that KEY.

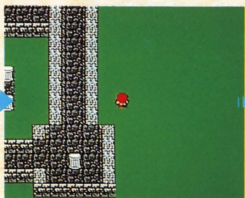
Look Carefully

FIND THE PATH TO THE TREASURY

Even though you can clearly see the Treasury, the path is not that obvious. Carefully walking around the right side will lead you there.



Walk close to the edge of the castle.



Still next to the wall, continue on around.



Here is the Treasury. Too bad the door is locked!

NOTEBOOK

- The Dwarves live across the Aldi Sea.
- Astos attacked, leaving the Prince under a spell.
- Only Matoya's HERB will cure the Prince.
- The Prince holds the mystic KEY.

PLAN FOR OBTAINING THE MYSTIC KEY

Many doors locked with the mystic KEY have prevented you from exploring numerous places. Follow this guide to get the mystic KEY.

ELFLAND

Obtain information, go shopping.

DWARF CAVE

Obtain information.

NORTHWEST CASTLE

Obtain information.

MARSH CAVE

Obtain the CROWN.

NORTHWEST CASTLE

Battle Astos.

MATOYA'S CAVE

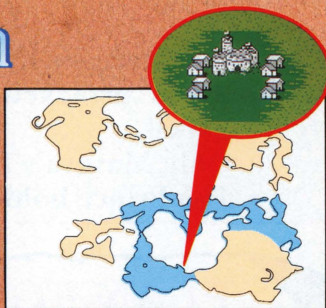
Trade Matoya the CRYSTAL for the HERB.

CASTLE OF ELF

Revive the Prince to be rewarded with the mystic KEY.

Go Shopping in ElfLand

Your quest to obtain the mystic KEY will first take you to ElfLand. Here, you should go shopping for everything you can afford. You must invest a lot of Gold in order to reach your goal.



ELFLAND

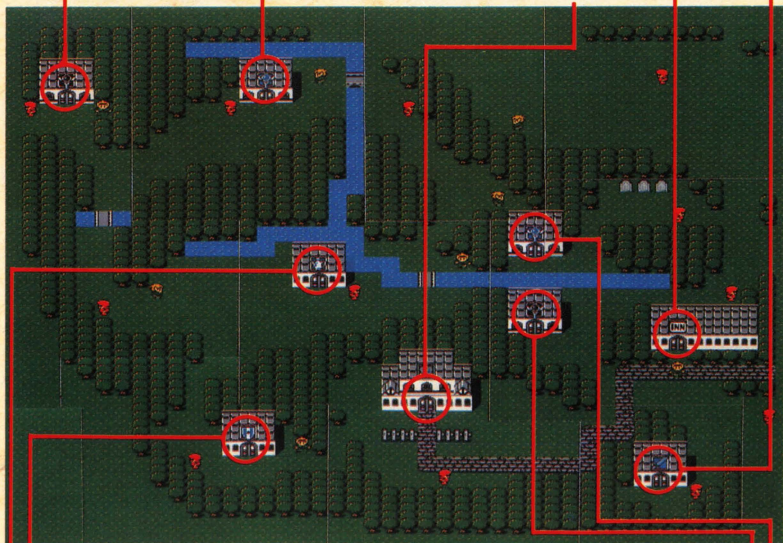
In ElfLand there are two levels of each type Magic Shop. Don't worry yet about buying spells above your magic level. You will be making many return trips to this town, so only buy what you can afford and can use at the time.

BLACK MAGIC SHOP (Level 4)

WEAPONS SHOP

WHITE MAGIC SHOP (Level 4)

CLINIC INN



ARMOR SHOP

WHITE MAGIC SHOP (Level 3)

POTION SHOP

BLACK MAGIC SHOP

(Level 3)

ASTOS WAITS IN HIDING

After ravaging ElfLand, Astos took a disguise and waits for his opportunity to take control, and become King of all Elves. His disguise is so good that you may talk to him, and not even know it.



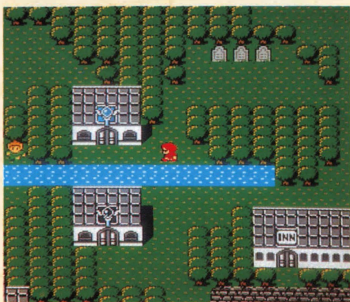
Astos' strike and disappear tactics cause the Elves to be wary — beware!



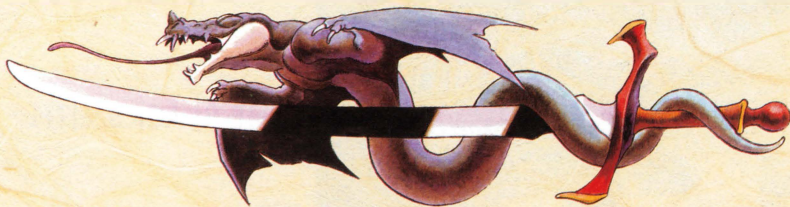
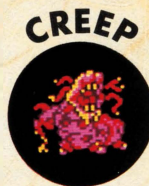
A spooky castle in the northwest? Light Warriors shouldn't be afraid.

POWER-UP BY BATTLING

In order to purchase the spells and weapons that you desire in ElfLand, you will need to earn a lot of Gold. In the forests surrounding the town, you will find many enemies who can be persuaded to give you their Gold. Look for the Ogre/Creep combination to supply a good share.



Return to ElfLand to spend your hard earned GOLD.

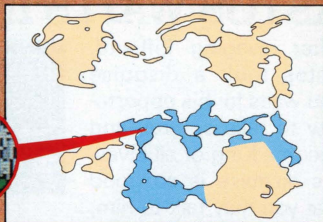


NOTEBOOK

- To get the mystic KEY the Prince must wake.
- A disguised Astos lies waiting.
- The Northwest Castle is a mystery.
- Level 4 magic is expensive!

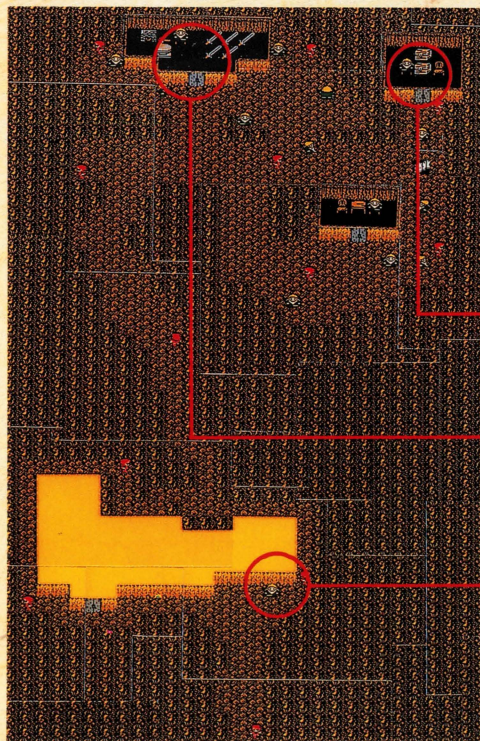
The Dwarf Cave

You should now travel to the Dwarf Cave. Here you will find many curious Dwarves and LOTS of information.



INSIDE THE DWARF CAVE

Here is what you will see in the Dwarf Cave. Luckily, there are no enemies here — just a bunch of friendly Dwarves. As always, be sure that you talk to every single Dwarf you can find and check every door.



A DWARF


THE BLACKSMITH

NERRICK

Useful Information

ASTOS STOLE THE CRYSTAL

This Dwarf informs you that the dreaded Astos was the one who stole the CRYSTAL from Matoya.



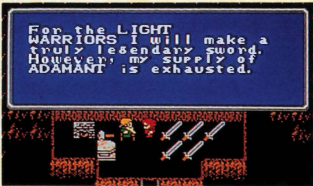
With the CRYSTAL, even the blind can see. Astos stole it from Matoya.

You've got to find a way to get the CRYSTAL from Astos!

Meet Smith

THE BLACKSMITH

This Dwarf is a master blacksmith. He would love to help you out, but hasn't got the raw materials needed. Maybe he can assist you later.




For the LIGHT WARRIORS I will make a truly legendary sword. However, my supply of ADAMANT is exhausted.

Looks like you should keep an eye out for some ADAMANT!

Help the Dwarves

NERRICK WANTS TNT

A Dwarf named Nerrick turns out to be a construction engineer. He needs your help to complete his project.



A rock blocks construction of my canal. If I only had TNT.

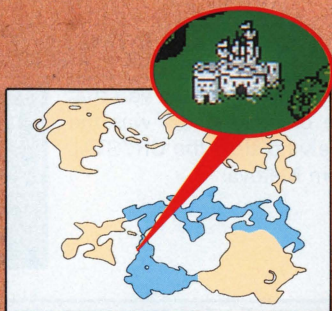
If you find any TNT, bring it to Nerrick.

NOTEBOOK

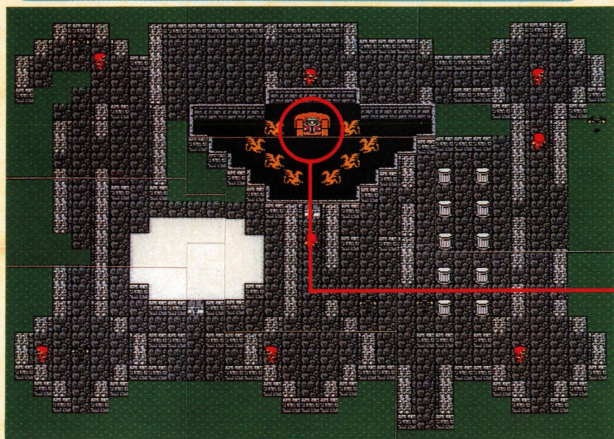
- Nerrick is building a canal and needs TNT.
- The blacksmith needs ADAMANT.
- Astos is the one who stole Matoya's CRYSTAL.
- The earth is rotting from the west.
- There is talk of a FLOATER?

Find Astos

Your search for Astos leads you to the mysterious and spooky Northwest Castle. Maybe here you will find a clue that will lead you to the Dark Elf.



NORTHWEST CASTLE

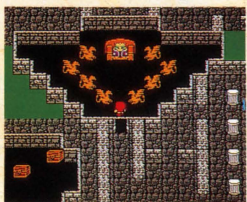


Once inside it doesn't seem all that spooky, just deserted. Your exploration reveals one locked room and a Lone King on his throne.

THE LONE KING

TALK TO THE LONE KING

Alone the King sits on his throne. He tells you a tale of woe, but doesn't mention what has become of his subjects. Of course, you are curious. What could he be hiding?



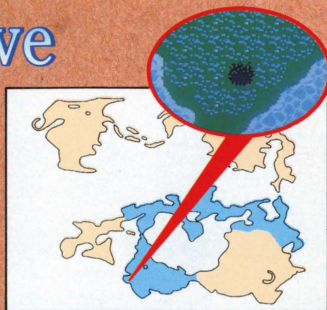
The King sits in seclusion.



A terrible tale. Maybe you can help him!

The Marsh Cave

So far Astos is nowhere to be found. The Lone King has directed you here to search for the CROWN. Maybe after you bring it back to him he will reward you.



Please refer to the Final Fantasy Dungeon Maps Poster.

DESCEND INTO THE HOLE

In this cave you will find legions of enemies whose sole purpose in life is to dispose of amateur Light Warriors. Bring many potions to restore your HP and to aid you if you get poisoned.



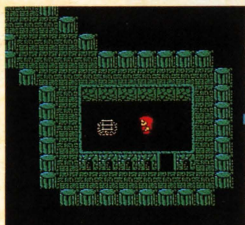
Earn Gold for shopping near the town.



Then purchase many potions at the shop.

EXPLORE EVERY ROOM

Hidden inside of many rooms you may find Treasure Boxes. You will also spot ladders and staircases that will allow you to descend to the lowest levels. It is important to check all of these to find everything hidden.



A ladder leading down.



You've found some armor for free! Remember to EQUIP it.



That's it! You found the CROWN.

Return to The Northwest Castle

You return with the CROWN, just as the Lone King asked you to. If you did not SAVE after leaving the Marsh Cave, do so before entering the castle. If you are in a weakened state an Ogre, or some other lowlife, could cause you to lose the CROWN.



YOU'VE BEEN DOUBLE-CROSSED!!

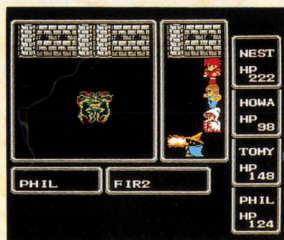
The Lone King was actually Astos in disguise. He tricked you into believing he was in trouble and needed you to retrieve the CROWN for him. Warriors, do not lose your battle with Astos and allow him to have the CROWN.



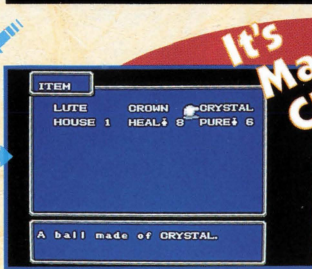
When you defeat Astos you can return the CRYSTAL to Matoya.



The battle begins!



Attack Astos.



It's Matoya's CRYSTAL!

If Matoya has her CRYSTAL, she will help you to wake the Prince of ElfLand.

Return Matoya's CRYSTAL

After defeating Astos, the next step to obtaining the mystic KEY is to return the stolen CRYSTAL to Matoya the witch.



SAIL IN YOUR SHIP

When you return to see Matoya, it won't be necessary to dock at Coneria and travel overland. The North Bridge was built high enough to sail under.



Even a 3 masted schooner can fit under here!



This port is much closer to Matoya's Cave.

MATOYA HAS THE HERB

In exchange for returning her CRYSTAL, Matoya will give you the HERB. The HERB is a powerful medicine that can wake the sleeping Prince of ElfLand.

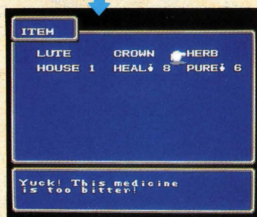


By all means, make the trade!



Once you have the HERB, you can go.

Maybe the Elf Prince won't mind the taste.



WAKE THE SLEEPING PRINCE

Now that Matoya has given you a magical **HERB**, it's time to return to the Castle of Elf. If you haven't **SAVED** your game recently, this is a good time to do so.



WAKE THE PRINCE WITH THE HERB

Proceed to the room where the Prince is sleeping. Enter and use the **HERB** to wake him. As a reward the Prince will give you the mystic **KEY**. This is, of course, a very useful item to have. The mystic **KEY** will open any door!



The **HERB** will wake the Prince from his deep sleep.

For being such nice Light Warriors, the Prince rewards you with the mystic **KEY**.



THE PRINCE IS AWAKE

Now that the Prince is awake, the people in the castle and in ElfLand have more information to give you. As a general rule, after you complete a significant event, you want to talk to people again to see if their stories change.



An **AIRSHIP**?!
Sounds exciting!

Better check out this cave to the west.



Remember All the Locked Doors?

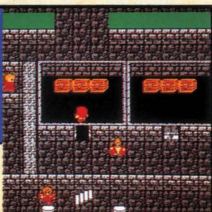
*Now that you have the mystic
KEY, you can go back and open all of those locked doors. There is
bound to be a lot of special things waiting for you.*



USE THE MYSTIC KEY TO OPEN ANY DOOR

First, **SAVE** your game so that a group of wandering monsters doesn't make you lose the mystic **KEY**. Now go see what's behind all of those doors!

**CASTLE
CONERIA**



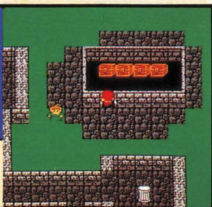
2 ROOMS

**THE
TEMPLE
OF
FIENDS**



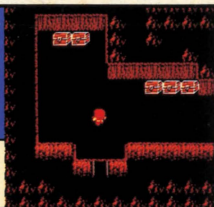
2 ROOMS

**CASTLE
OF
ELF**



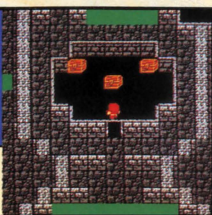
1 ROOM

**DWARF
CAVE**



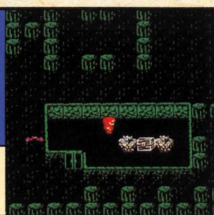
1 ROOM

**NORTH-
WEST
CASTLE**



1 ROOM

**CAVE
OF
MARSH**



4 ROOMS

Help Nerrick

In the process of opening all of the locked doors, you probably found some TNT in the Treasury Room of Coneria. Remember Nerrick in the Dwarf Cave? Go talk with him now.



Nerrick needs some TNT to make a canal.

HAND OVER THE TNT

Give the TNT to Nerrick and you will see that he is overjoyed. He immediately leaves to start work. The canal that he builds is located a small distance south of the Dwarf Cave. The neat thing about this canal is that it allows you to sail into a brand new area!



Nerrick wants to get to work now that he has the materials that he needs.

BEFORE



AFTER



WHEN THE CANAL OPENS, YOUR WORLD GETS LARGER

Sailing through the newly built canal will open up a very large area for you. Go out and look around. As always, it's a good idea to SAVE your game before you take off.



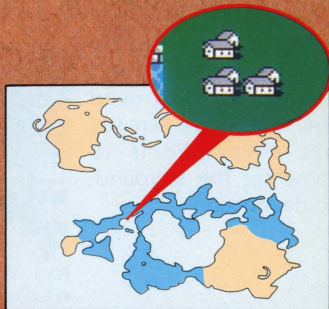
You can sail anywhere in the world now!

This is the town of Melmond, just west of the canal.



The Town of Melmond

Melmond is a village of farmers. They are greatly concerned with the fate of the earth.



THE FIRST TOWN WEST OF THE CANAL

After you pass through the canal, Melmond is the first city that you will see. When you explore the town you will see that it has been virtually destroyed. The townspeople keep mentioning that a Vampire is to blame.



Here is the port close to Melmond. Stop and visit this town.

MELMOND

Melmond sure looks different from any town we've been to so far. What has happened here?

ARMOR SHOP

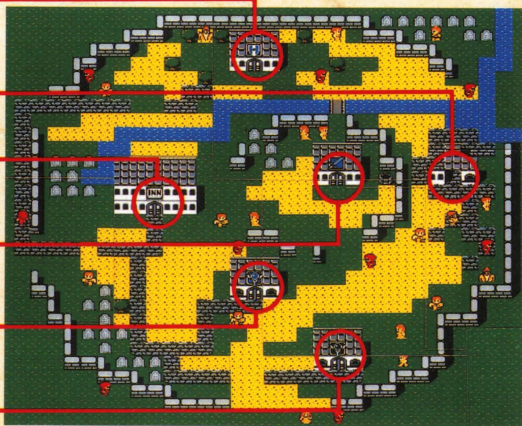
CLINIC
(Destroyed)

INN

WEAPON SHOP

WHITE MAGIC SHOP

BLACK MAGIC SHOP



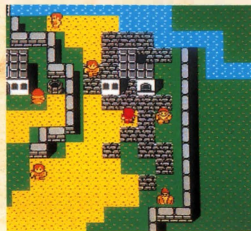
MELMOND IS IN RUINS!

Notice the large number of gravestones and patches of destroyed land. The people here say that a Vampire is to blame for the surrounding destruction.



Bad news! Let's go see what's become of the CLINIC.

Looks like the CLINIC was the Vampire's main target. You won't be able to revive any Warriors here!



TALK TO EVERYONE

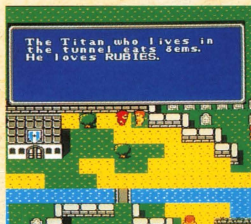
The people of Melmond have a lot of important information for you. Be sure to talk to EVERYONE!



These people think that the Vampire is responsible for the rotting of the earth.



A clue to travel south and meet with Sarda.



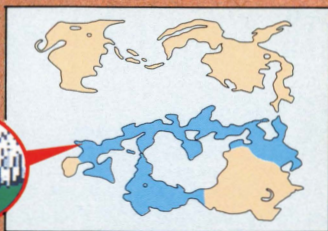
The Titan loves rubies.

NOTEBOOK

- The Vampire has ransacked Melmond.
- A sage named Sarda lives in a cave to the south.
- The Earth Cave is on a peninsula south of Melmond.
- Dr. Unne is here.
- With the destruction of the CLINIC, no revivals can take place here.
- The ancient people used a floating stone?
- The civilization to the north is also in ruins.

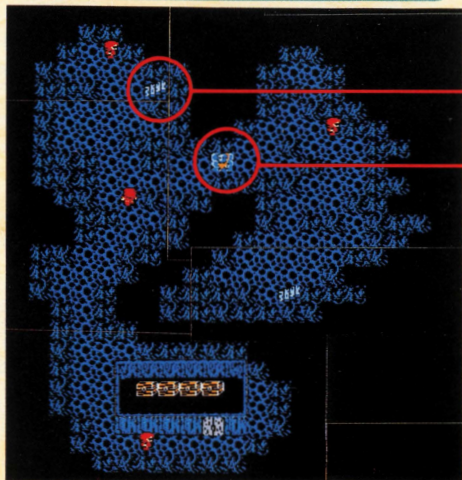
Titan's Tunnel

If you head west from Melmond, you'll find Titan's Tunnel.



TITAN'S TUNNEL

You must pass through Titan's Tunnel in order to get to Sarda's Cave.

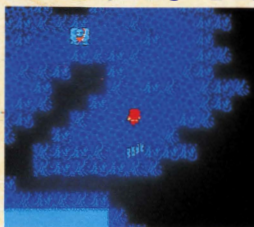


EXIT

THE TITAN

THE TITAN BLOCKS THE ROAD

It seems that the Titan will not let you pass. Remember the clue back in Melmond that said that the Titan loves rubies? Looks like it's time to go search for a RUBY.



Boy, it's dark in here!

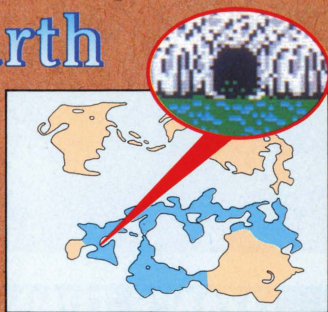
The Titan will not let you pass.



Enter the Earth Cave

Cave

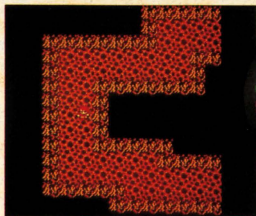
The Earth Cave can be found on a peninsula south of Melmond. The people in Melmond said that the Vampire is here.



Please refer to the Final Fantasy Dungeon Maps Poster.

SEARCH FOR THE HIDDEN STAIRCASE

On the first level of this cave there is a staircase hidden from view. CAUTION: The arm on the far left of the first floor is populated by Giants that will attack you with every step. This is a good place to gain more Experience and Gold, but it is a VERY dangerous place.



GIANT

Look out for the Giants!

THE VAMPIRE IS ON THE 3RD FLOOR.

Use the map of this cave to help you get down to the third floor. Here you will find the Vampire that the people in Melmond were so concerned about. If you can defeat him, there is bound to be a substantial reward.



It's time for you to meet the Light Warriors, Vampire!

It's a fight to the finish. Watch your neck!



YOU FOUND A RUBY!

If you are successful in defeating the Vampire, open the Treasure Box. It's a RUBY! Remember the Titan?



Open this Treasure Box to find a RUBY!

A PLATE COVERS THE FLOOR . . .

When you continue past the Vampire's area, you'll discover something on the floor. Pushing A to investigate, you find that it's a stone plate that cannot be moved.



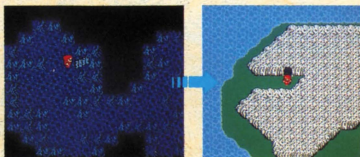
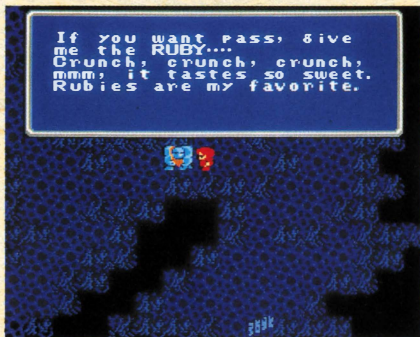
You have accomplished a lot in this cave. Maybe it's a good idea to get out of here and deal with this stone plate later.

Pass Through Titan's Tunnel

After you've left the Earth Cave, you should SAVE your game. Use a TENT or go back to Melmond. Then go to Titan's Tunnel.

GO TO THE TITAN

You now have a delicious RUBY (well, the Titan thinks so anyway). After you give him the RUBY, be sure to investigate the Treasure Boxes, their contents may come in handy.

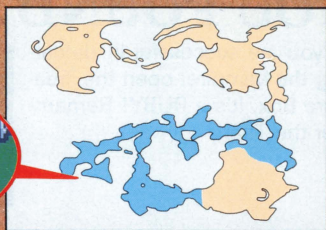


Go through the exit to return to the light of day.

Supper Time for the Titan!

Visit Sarda

After passing through Titan's Tunnel, you will gain access to Sarda's Cave. Go in and see what he has for you.



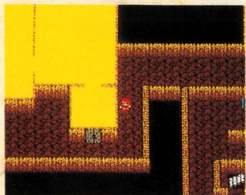
SARDA'S CAVE

Inside Sarda's Cave, you will find (who else?) Sarda the Sage. He must have some great information.

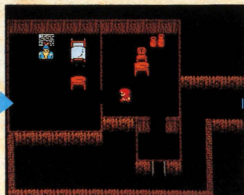


SARDA WILL GIVE YOU AN IMPORTANT OBJECT

Go into Sarda's room and talk to him. He will give you a special ROD and some important information.



Where is that sneaky sage?



Oh, he's hiding in his bedroom!



Now you'll be able to complete your investigation of the Earth Cave. This ROD will move that stone plate that you found.

Solve the Mystery of the Earth Cave

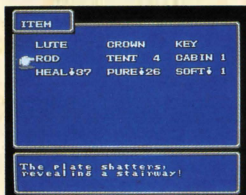
SAVE your game, then go back to the Earth Cave. It's time to find out just what is under that stone plate on the third floor.



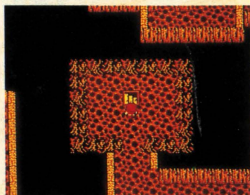
This looks like a good place to set up a CABIN!

USE THE ROD

Work your way down to the third floor and go to the stone plate. When you pry on it with the ROD, the stone plate breaks into small pieces.



Use the ROD by going to the ITEM screen, selecting ROD and pressing A.



The stairway leads you further into the depths of the Earth Cave.

FIND LICH, THE EARTH FIEND

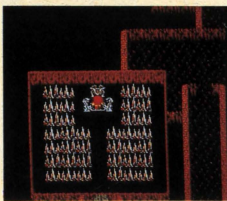
Use the map to find your way to the Earth Altar. Hopefully, you have a large enough stock of HEAL potions to make it there. Enter the room on the fifth floor and meet Lich, the Earth Fiend. If you succeed in defeating him, proceed forward to the altar to restore the power of Earth to the Orb. After doing so, step forward to warp from the cave.



You enter the room to find a strange glowing ball.



Stepping up to the altar restores the power of Earth to the Orb.



Crescent Lake

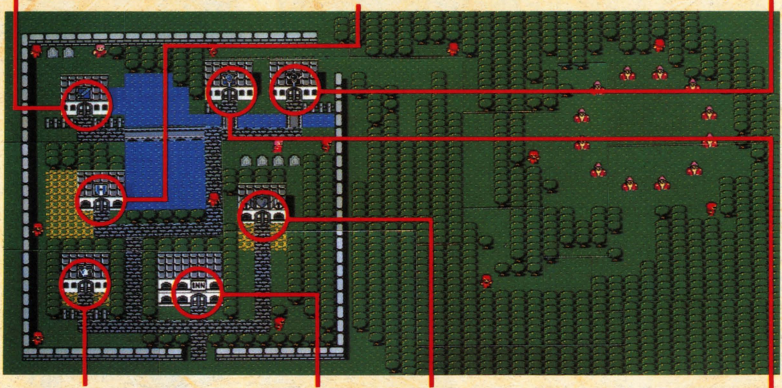
The town is named for the large crescent shaped lake to its east. In Coneria you were told that Lukahn left to join his colleagues here. Here you receive the CANOE from a Sage.



THE CIRCLE OF SAGES

Near the magic shops you will find a break in the town wall that will allow you to reach the Circle of Sages.

WEAPONS SHOP ARMOR SHOP BLACK MAGIC SHOP



POTION SHOP INN CLINIC WHITE MAGIC SHOP

VISIT THE CIRCLE OF SAGES

Travel the path you find through the hole in the town wall near the Black Magic Shop. The path leads you to the Circle of Sages. Here you find Lukahn the prophet, in consultation with his colleagues.



Be sure to return here later, the Sages have good information.

YOUR REWARD, THE CANOE

As a reward, one of the Sages will present you with the CANOE. This new vehicle allows you to travel the lakes and rivers in your path.



Your reward for a job well done will lead you to a new goal.

CRUISE THE WATERWAYS

By using the CANOE, you will be able to shortcut through the lakes and rivers that you previously had to go around. Most importantly though, you will be able to travel to Gurgu Volcano to battle the Fire Fiend.



Walking up to the riverbank, your journey continues in the CANOE.



With the CANOE, the mouth of any stream can be like a port.

NOTEBOOK

- The twelve Sages are here.
- The Fire Fiend is at Gurgu Volcano.
- You must use the CANOE to navigate to Gurgu Volcano.
- The apprentice sleeps.
- Everything here is expensive!

Gurgu Volcano

Here is where the Sage told you to go to find the Fiend of Fire. **SAVE** your journey before entering the volcano by using a **TENT** or **CABIN**.



Please refer to the Final Fantasy Dungeon Maps Poster.

A WACKY, WINDING, WATERWAY

By following the river that leads from Crescent Lake you can find Gurgu Volcano. Deep within the fiery hollow of this ancient place hides Kary, the Fiend of Fire. If you do not stop her, she will burn everything she can.



These waterways can be confusing, be sure to make a map!

At the foot of the Gurgu Volcano. A nice place to set up a **HOUSE**.



MONSTERS OF FLAME

Weapons, and magic spells from the **ICE** category are the most effective against enemies that are made of, live in, or use **FIRE**. The reverse is also true, you should use magic spells, and weapons and armor from the **FIRE** category when dealing with **ICE** monsters.



FIRE

AGAMA

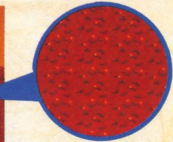
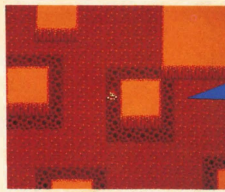


**RED
HYDRA**



AVOID WALKING THROUGH LAVA

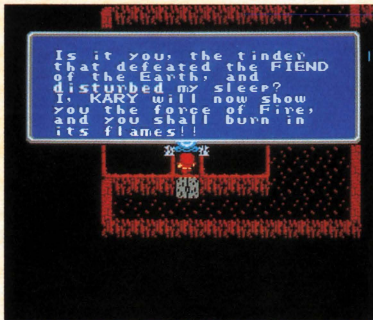
All throughout the volcano you will find puddles and streams of molten lava. Your boots will protect you to a small extent, but to avoid unnecessary loss of HP, do not walk through the lava when you can avoid it.



Tread lightly brave Warriors.

BATTLE AGAINST THE FIRE FIEND

The Sages are counting upon you to defeat Kary, the Fiend of Fire. Wind your way into the depths of the Gurgu Volcano. Fight to stay alive with each step. By the time you reach the Fire Altar you would much rather defeat Kary and warp out than retrace your path.



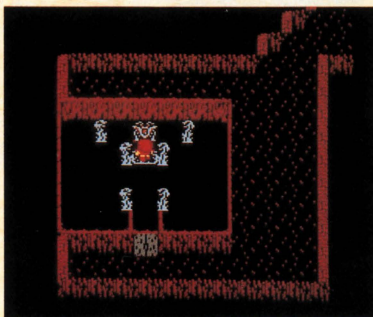
She sure is torchy, isn't she?



**Kary,
the Fiend
of Fire**



Defeat this fiend to protect the world from the fury of her flame!



After defeating Kary, step forward to restore the Power of Fire to the Orb. Continue forward to be warped to the outside world.

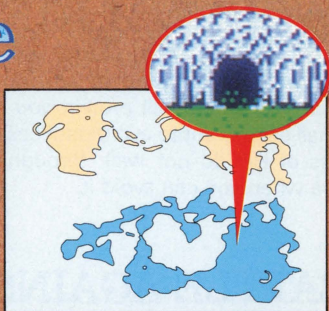


**The
Fire Orb
Is Lit!!**



The Ice Cave

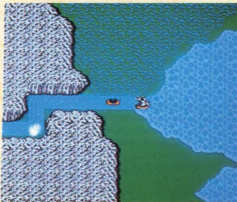
North of the volcano you will find the Ice Cape. This is what the apprentice Sage in Crescent Lake was probing for. Hidden deep inside you will find the FLOATER.



Please refer to the Final Fantasy Dungeon Maps Poster.

PADDLE UP THE CREEK

You must sail your SHIP north along the coastline from the port near Crescent Lake. When you find the river, sail your SHIP to the mouth. You will continue up the river in the CANOE.



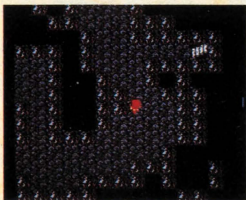
With the CANOE, ports are no longer the only place to dock.

FIND THE FLOATER

The Ice Cave is a treacherous place for Light Warriors with insufficient experience. If you just cannot survive the trek through, you should gain more Experience before attempting to find the FLOATER.



The FLOATER has to be in that box. How can you get to it?



Locate the stairway to the next floor.



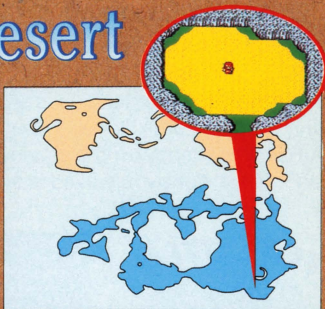
What can this hole be for???



Step in the hole and warp to the box you just couldn't get to.

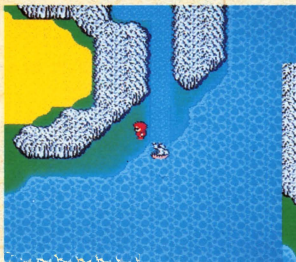
The Ryukahn Desert

The prophets of ElfLand inform you that they now have their visions. Now that you have possession of the FLOATER, they can see the AIRSHIP buried in the Ryukahn Desert.

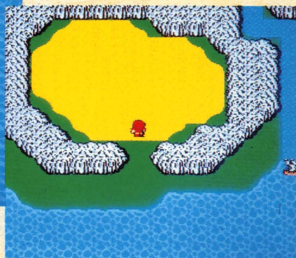


WHERE TO DOCK

Sail your SHIP to the mouth of the river east of the Ryukahn Desert. Weigh anchor and use the CANOE to get ashore. A short journey west will find the opening to this desolate, arid wasteland.



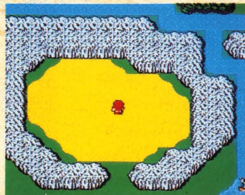
Weigh anchor and CANOE ashore.



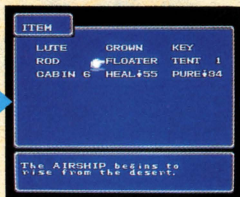
The Ryukahn Desert, where is the AIRSHIP?

AN AIRSHIP APPEARS!!

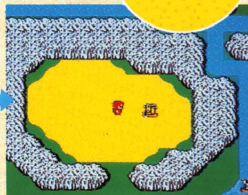
Once in the Ryukahn Desert you can use the FLOATER to raise the AIRSHIP from beneath the sands. So much time has passed since the AIRSHIP has been seen. Everyone will be amazed.



Where is it? The Elves said it would be here!



Go to the ITEM Screen, select FLOATER, then push A to reveal its location.



It's time to cruise around in your awesome AIRSHIP!

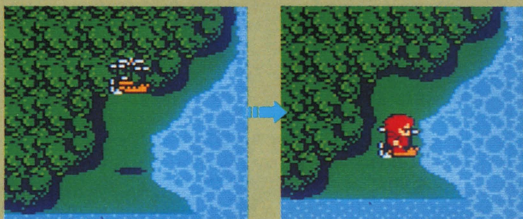
WHERE CAN I LAND THIS THING?

Taking off in the AIRSHIP is easy. Simply walk over the top of it and press the A button. However, landing is another story. Flat fields or grassy plains are its only landing spots. To tell if you can land, observe the terrain marked by the AIRSHIP's shadow. If the shadow is completely on a landing area press A to land. If the sight you picked is unsuitable, the AIRSHIP will not touch down.

FLAT FIELD



GRASSY PLAIN



The shadow is your indicator to know where you can touch down.

Soar Over The Entire World

With the AIRSHIP your world has now expanded to its full limit. Its cruising speed is four times what you can achieve on foot. Best of all, there are no enemies in the sky to attack you! Make sure to keep track of all your clues as you soar your way around the world completing your quest to restore the light to the other two Orbs.



CLASS CHANGE

Each character will mature into an adult state after certain conditions are met. This will enable them to purchase some magic spells, and EQUIP some weapons that they were not previously able to. After class change some characters will become magic users and will gain a Magic Level meter on the MENU screen.

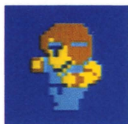
KNIGHT



NINJA



GRAND MASTER (Master)



RED WIZARD (Red Wiz)



WHITE WIZARD (Wh. Wiz)



BLACK WIZARD (Bl. Wiz)



★ WHITE MAGIC ★

● LEVEL 1 ●

CURE (one ally)	HP will be recovered slightly.
HARM (all enemies)	Hurts Undead monsters ranging from 20 to 80 HP.
FOG (spell caster)	Shields by envelopment in a thick fog. Armor will increase 8 points.
RUSE (spell caster)	The enemy is fooled into seeing multiple images of the magician. Evade rate increases 40%.

● LEVEL 2 ●

LAMP (one ally)	Removes the enemies' DARK spells.
MUTE (one enemy)	Magic users are rendered unable to speak.
ALIT (all allies)	Anti-lightning, reduces damage received by 25 to 50%.
INVS (one ally)	Invisibility, 20% increase in ability to avoid attack.

● LEVEL 3 ●

CUR2 (one ally)	Second CURE spell, HP will recover from 32 to 64 points.
HRM2 (all enemies)	Second HARM. Damages to Undead monsters will range from 40 to 160 points.
AFIR (all allies)	Anti-FIRE spell, reduces damage from Fire spells by 25 to 50%.
HEAL (all allies)	Restores 12 to 24 HP.

● LEVEL 4 ●

PURE (one ally)	Magical antidote for poison.
FEAR (all enemies)	Causes the enemies to run away in terror.
AICE (all allies)	Anti-ICE spell, decreases the effects by 25 to 50%.
AMUT (one ally)	Anti-MUTE spell will nullify the enemies' MUTE spell.

White Magic is used mainly for the protection of your adventure party. Remember that Magic level is not the same as Experience level.

● LEVEL 5 ●

CUR3 (one ally)	Third CURE spell. HP will recover by 64 to 128 points.
LIFE (one ally)	Revives a slain ally. Cannot be used during battle. CAUTION: HP is only 1 after being revived.
HRM3 (all enemies) . . .	Third HARM spell. Damages to Undead monsters range from 60 to 240 points.
HEL2 (all allies)	Second HEAL spell. HP will recover by 24 to 48 points.

● LEVEL 6 ●

SOFT (one ally)	Releases one ally from enemies' STONE spells.
EXIT (all allies)	Will warp the adventure party from the dungeon, but does not work in battle.
FOG2 (all allies)	Second FOG, increases armor defensive rating by 12 points.
INV2 (all allies)	Second Invisibility spell. Results in a 40% decrease in the enemy attack.

● LEVEL 7 ●

CUR4 (all allies)	Fourth and most powerful CURE spell. HP will be completely restored.
HRM4 (all enemies) . . .	Fourth and most powerful HARM spell. Will damage Undead monsters by 80 to 320 HP.
ARUB (all allies)	Offers protection from the enemies' RUB spell.
HEL3 (all allies)	Third, and most powerful HEAL spell. HP will recover by 48 to 96 points.

● LEVEL 8 ●

LIF2 (one ally)	Revives a slain ally with complete restoration of HP.
FADE (all enemies) . . .	Causes evil to be gone.
WALL (one ally)	Places a protective wall around one Warrior, preventing the enemies use of magic on him.
XFER (one enemy) . . .	Deprives strong enemies of their special defense.

★ BLACK MAGIC ★

● LEVEL 1 ●

- FIRE (one enemy)** A small fireball capable of 10 to 40 HP of damage is thrown at the enemy.
- SLEP (one enemy)** . . . Causes the enemy to fall asleep, leaving him unable to defend himself.
- LOCK (one enemy)** . . . "Locks-in" the enemy for attack. The success rate of inflicting damage increases by 10%.
- LIT (one enemy)** LIGHTNING is fired at the enemy, from the magician's fingers. Damages range from 10 to 40 points.

● LEVEL 2 ●

- ICE (one enemy)** The cold wind and driving snow of a blizzard are directed at the enemy. Damages range from 20 to 80 points.
- DARK (all enemies)** . . . The enemy is blinded by darkness.
- TMPR (one ally)** Weapon strength is increased by 14 points.
- SLOW (all enemies)** . . . Slows the enemies' thinking and actions.

● LEVEL 3 ●

- FIR2 (all enemies)** Second FIRE spell. Larger fireballs are directed at the enemy party; damages from 30 to 120 points.
- HOLD (one enemy)** . . . Similar to SLEEP, the enemy becomes comatose. Does not work on some enemies.
- LIT2 (all enemies)** Second LIGHTNING spell. Tremendous results are possible when used in water.
- LOK2 (all enemies)** . . . More powerful LOCK spell, works on entire enemy party, making them easier to hit.

● LEVEL 4 ●

- SLP2 (one enemy)** Most powerful SLEEP spell.
- FAST (one ally)** Raises agility, nullifies SLOW, and increases fire rate of weapon 2 times.
- CONF (all enemies)** . . . Confusion enters the enemies' minds. They cannot identify their enemy and will attack themselves.
- ICE2 (all enemies)** Second ICE spell. Damages range from 40 to 160 points.

Black Magic is used offensively, for assisting your allies in battle, and as a primary attack.

● LEVEL 5 ●

- FIR3 (all enemies)** Third and most powerful FIRE spell. Damages range from 50 to 200 points.
- BANE (all enemies)** A vapor trail of poison smoke will completely terminate many enemies.
- WARP (all enemies)** Teleports your party to the previous level of a dungeon. Use it when you are lost.
- SLO2 (one enemy)** Most powerful SLOW.
-

● LEVEL 6 ●

- LIT3 (all enemies)** Third and most devastating LIGHTNING spell. Damages range from 60 to 240 points.
- RUB (one enemy)** Erases an enemy from the face of the earth completely. Does NOT work on Undead monsters.
- QAKE (all enemies)** An earthquake rocks the ground under the enemies' feet. When cracks appear, they fall in.
- STUN (one enemy)** Paralyzes any enemy of up to 300 HP.
-

● LEVEL 7 ●

- ICE3 (all enemies)** Most powerful ICE spell. Damages range from 70 to 280 points.
- BRAK (one enemy)** Breaks the enemy into little pieces.
- SABR (spell caster)** Makes your weapon sharper magically. Success rate increases by 40% and damages increase by 15%.
- BLND (one enemy)** The enemy is blinded and cannot see well enough to effectively attack.
-

● LEVEL 8 ●

- NUKE (all enemies)** Melts everything with tremendous heat.
- STOP (all enemies)** Time is stopped for the enemies.
- ZAP! (all enemies)** The enemy is pushed into the 4th dimension. Does not work all the time.
- XXXX (one enemy)** Similar to, but more effective than RUB. Those enemies are defeated completely.

INDEX

Adventure Party	3, 34, 35, 36, 37
How to Organize an Adventure Party	3, 34
Character Occupations	35
Adventure Party Examples	36, 37
AIRSHIP	74
Basic Controller Functions	2
Battle	18, 19, 24, 25, 26
Battle Screen	18
Battle Commands	18, 19
Wise Battle Tactics	24, 25
Battle Techniques	26
Black Magic	13, 78, 79
CANOE	69
Class Change	75
Displaying the Overworld Map	40
Game Starting (NEW GAME/CONTINUE)	2
How to Search	7, 16
How to Talk	6
HP & MP (Restoring)	20, 21
Lining up to Battle	17
Magic Level and Experience	14
Opening Treasure Boxes	28
Quitting the Game/How to SAVE	2, 15, 20
RESPOND RATE	2
Reviving a Slain Ally (CLINIC)	16, 22
Screen Symbols (Weapons and Armor)	11
SHIP	44
Shop and INN Instructions	10, 11, 13, 14, 15, 16
Subscreen	12, 13, 20, 21, 22, 23
WEAPON & ARMOR EQUIP	12
WEAPON & ARMOR TRADE	12
WEAPON & ARMOR DROP	12
ITEM Screen	20, 21
MAGIC Screen	21
STATUS Screen	22, 23
White Magic	13, 76, 77

90-DAY LIMITED WARRANTY NINTENDO GAME PAKS

90-DAY LIMITED WARRANTY:

Nintendo of America Inc. ("Nintendo") warrants to the original consumer purchaser that this Nintendo Game Pak ("PAK") shall be free from defects in material and workmanship for a period of 90 days from date of purchase. If a defect covered by this warranty occurs during this 90-day warranty period, Nintendo will repair or replace the PAK, at its option, free of charge.

To receive this warranty service:

1. DO NOT return your defective Game Pak to the retailer.
2. Notify the Nintendo Consumer Service Department of the problem requiring warranty service by calling: 1-800-255-3700. Our Consumer Service Department is in operation from 4:00 A.M. to 10:00 P.M. Pacific Time, Monday through Saturday (times subject to change). Please Do not send your Pak to Nintendo before calling the Consumer Service Department.
3. If the Nintendo Service Representative is unable to solve the problem by phone, you will be provided with a Return Authorization number. Simply record this number on the outside packaging of your defective PAK, and return your PAK FREIGHT PREPAID AND INSURED FOR LOSS OR DAMAGE, together with your sales slip or similar proof-of-purchase within the 90-day warranty period to:

Nintendo of America Inc.
NES Consumer Service Department
4820 - 150th Avenue N.E.
Redmond, WA 98052

This warranty shall not apply if the PAK has been damaged by negligence, accident, commercial use, unreasonable use, modification, tampering, or by other causes unrelated to defective materials or workmanship.

COMPLIANCE WITH FCC REGULATIONS

This equipment generates and uses radio frequency energy and if not installed and used properly, that is, in strict accordance with the manufacturer's instructions, may cause interference to radio and television reception. It has been type tested and found to comply with the limits for a Class B computing device in accordance with the specifications in Subpart J of Part 15 of FCC Rules, which are designed to provide reasonable protection against such interference in a residential installation. However, there is no guarantee that interference will not occur in a particular installation. If this equipment does cause interference to radio or television reception, which can be determined by turning the equipment off and on, the user is encouraged to try to correct the interference by one or more of the following measures:

- Reorient the receiving antenna
- Relocate the NES with respect to the receiver
- Move the NES away from the receiver
- Plug the NES into a different outlet so that control Deck and receiver are on different circuits.

If necessary, the user should consult the dealer or an experienced radio/television technician for additional suggestions. The user may find the following booklet prepared by the Federal Communications Commission helpful:

How to Identify and Resolve Radio - TV Interference Problems.

This booklet is available from the U.S. Government Printing Office, Washington, D.C. 20402, Stock No. 004-000-00345-4.

REPAIR/SERVICE AFTER EXPIRATION OF WARRANTY:

If the PAK develops a problem requiring service after the 90-day warranty period, you may contact the Nintendo Consumer Service Department at the phone number noted at left. If the Nintendo Service Representative is unable to solve the problem by phone you will be advised of the approximate cost for Nintendo to repair or replace the PAK and will be given a Return Authorization number.

You may then record this number on the outside packaging of the defective PAK and return the defective merchandise, FREIGHT PREPAID AND INSURED FOR LOSS OR DAMAGE, to Nintendo, and enclose a check or money order payable to Nintendo of America Inc. for the cost quoted you. (Repairs may also be charged on a VISA or MASTERCARD credit card.)

If after personal inspection, the Nintendo Service Representative determines the PAK cannot be repaired, it will be returned and your payment refunded.

WARRANTY LIMITATIONS:

ANY APPLICABLE IMPLIED WARRANTIES, INCLUDING WARRANTIES OF MERCHANTABILITY AND FITNESS FOR A PARTICULAR PURPOSE, ARE HEREBY LIMITED TO NINETY DAYS FROM THE DATE OF PURCHASE AND ARE SUBJECT TO THE CONDITIONS SET FORTH HEREIN. IN NO EVENT SHALL NINTENDO BE LIABLE FOR CONSEQUENTIAL OR INCIDENTAL DAMAGES RESULTING FROM THE BREACH OF ANY EXPRESS OR IMPLIED WARRANTIES.

The provisions of this warranty are valid in the United States only. Some states do not allow limitations on how long an implied warranty lasts or exclusion of consequential or incidental damages, so the above limitations and exclusion may not apply to you. This warranty gives you specific legal rights, and you may also have other rights which vary from state to state.



Nintendo of America Inc.
P.O. Box 957, Redmond, WA 98073-0957 U.S.A.

PRINTED IN JAPAN