



**NATSUME®**

*Serious Fun®*

[www.natsume.com](http://www.natsume.com)

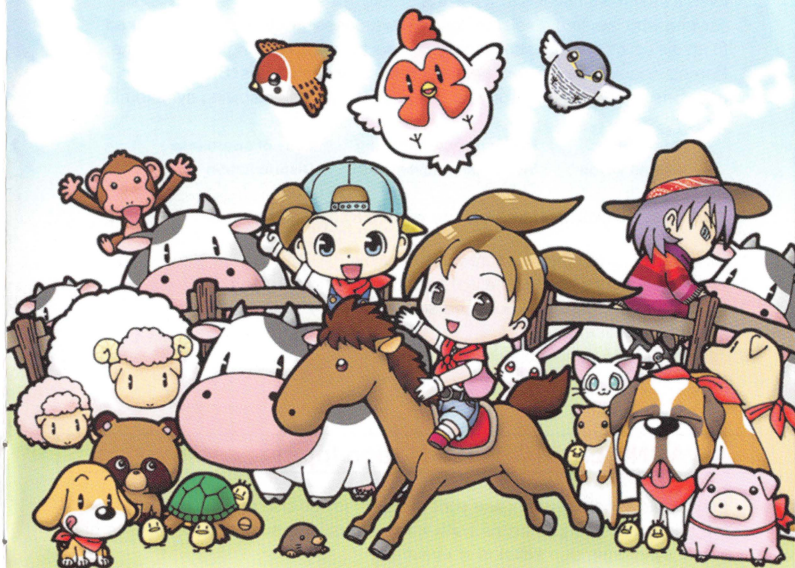
**NATSUME INC.**  
1818 GILBRETH ROAD, SUITE 229  
BURLINGAME, CA 94010  
Phone: (650) 692-1941

Harvest Moon, Natsume and Serious Fun are registered trademarks of Natsume Inc.  
©2006 Natsume Inc. ©2006 Marvelous Interactive Inc. All Rights Reserved.

PRINTED IN USA

# HARVEST MOON®

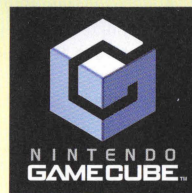
*Magical Melody*



**NATSUME®**

*Serious Fun®*

**INSTRUCTION BOOKLET**



**PLEASE CAREFULLY READ THE SEPARATE HEALTH AND SAFETY PRECAUTIONS BOOKLET INCLUDED WITH THIS PRODUCT BEFORE USING YOUR NINTENDO® HARDWARE SYSTEM, GAME DISC OR ACCESSORY. THIS BOOKLET CONTAINS IMPORTANT HEALTH AND SAFETY INFORMATION.**

**IMPORTANT SAFETY INFORMATION: READ THE FOLLOWING WARNINGS BEFORE YOU OR YOUR CHILD PLAY VIDEO GAMES**

### **⚠ WARNING - Seizures**

- Some people (about 1 in 4000) may have seizures or blackouts triggered by light flashes or patterns, such as while watching TV or playing video games, even if they have never had a seizure before.
- Anyone who has had a seizure, loss of awareness, or other symptom linked to an epileptic condition should consult a doctor before playing a video game.
- Parents should watch when their children play video games. Stop playing and consult a doctor if you or your child have any of the following symptoms:

<b>Convulsions</b>	<b>Eye or muscle twitching</b>	<b>Loss of awareness</b>
Altered vision	Involuntary movements	Disorientation

To reduce the likelihood of a seizure when playing video games:

1. Sit or stand as far from the screen as possible.
2. Play video games on the smallest available television screen.
3. Do not play if you are tired or need sleep.
4. Play in a well-lit room.
5. Take a 10 to 15 minute break every hour.

### **⚠ WARNING - Repetitive Motion Injuries and Eyestrain**

Playing video games can make your muscles, joints, skin or eyes hurt after a few hours. Follow these instructions to avoid problems such as tendinitis, carpal tunnel syndrome, skin irritation or eyestrain:

- Avoid excessive play. It is recommended that parents monitor their children for appropriate play.
- Take a 10 to 15 minute break every hour, even if you don't think you need it.
- If your hands, wrists, arms or eyes become tired or sore while playing, stop and rest them for several hours before playing again.
- If you continue to have sore hands, wrists, arms or eyes during or after play, stop playing and see a doctor.

# Warranty

Natsume Inc. warrants to the original purchaser of this Natsume product that this Game Disc is free from defects in materials and workmanship for a period of ninety (90) days from the date of purchase. This Natsume product is sold "as is" without expressed or implied warranty of any kind, and Natsume is not liable for any losses or damages of any kind resulting from the use of this product. If a defect covered by this

warranty occurs during this 90-day warranty period, Natsume will repair or replace the Game Disc, at its option, free of charge. Send product postage paid, along with the dated proof of purchase, to the address shown below.

This warranty shall not be applicable and shall be void if the defect in the Natsume product arises through abuse, unreasonable use, mistreatment or neglect. THIS WARRANTY IS IN LIEU OF ALL OTHER WARRANTIES AND NO OTHER REPRESENTATIONS OR CLAIMS OF ANY NATURE SHALL BE BINDING ON OR OBLIGATE NATSUME. ANY IMPLIED WARRANTIES APPLICABLE TO THIS PRODUCT, INCLUDING WARRANTIES OF MERCHANTABILITY AND FITNESS FOR A PARTICULAR PURPOSE, ARE LIMITED TO THE NINETY (90) DAY PERIOD DESCRIBED ABOVE. IN NO EVENT WILL NATSUME BE LIABLE FOR ANY SPECIAL, INCIDENTAL OR CONSEQUENTIAL DAMAGES RESULTING FROM POSSESSION, USE OR MALFUNCTION OF THIS PRODUCT. Some states do not allow imitations as to how long an implied warranty lasts and/or exclusions of limitations of incidental or consequential damages, so the above limitations and/or exclusions of liability may not apply to you. This warranty gives you specific rights, and you may also have other rights which vary from state to state.



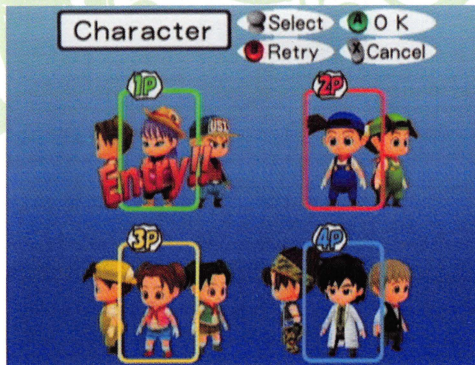
*Serious Fun®*

**NATSUME INC.**  
1818 GILBRETH ROAD, SUITE 229  
BURLINGAME, CA 94010  
Phone: (650) 692-1941

Please be sure to visit our home page at: [WWW.NATSUME.COM](http://WWW.NATSUME.COM)

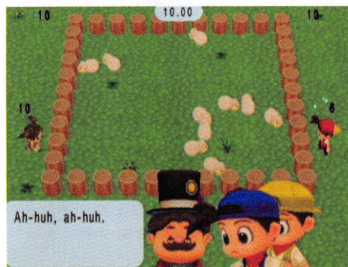
# Multiplayer Mini Games!

As you fish, climb mountains and attend festivals you'll open hidden mini games that you can play against the computer or other human opponents. Opening a mini game is always a surprise, so check the Mini Game option on the title screen whenever you begin a new game session.



## Four for Fun!

Maximize your challenge and fun by joining up with four Nintendo GameCube Controllers and four players for exciting multiplayer contests! You may find that some of your guests prefer certain mini games over others, but there's enough variety for any game player to find a way to have an enjoyable experience!



## ⚠ WARNING - Electric Shock

To avoid electric shock when you use this system:

- Do not use the Nintendo GameCube during a lightning storm. There may be a risk of electric shock from lightning.
- Use only the AC adapter that comes with your system.
- Do not use the AC adapter if it has damaged, split or broken cords or wires.
- Make sure that the AC adapter cord is fully inserted into the wall outlet or extension cord.
- Always carefully disconnect all plugs by pulling on the plug and not on the cord. Make sure the Nintendo GameCube power switch is turned OFF before removing

## ⚠ CAUTION - Motion Sickness

Playing video games can cause motion sickness. If you or your child feel dizzy or nauseous when playing video games with this system, stop playing and rest. Do not drive or engage in other demanding activity until you feel better.

## ⚠ CAUTION - Laser Device

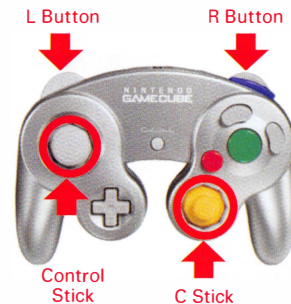
The Nintendo GameCube is a Class I laser product. Do not attempt to disassemble the Nintendo GameCube. Refer servicing to qualified personnel only.

Caution - Use of controls or adjustments or procedures other than those specified herein may result in hazardous radiation exposure.

## CONTROLLER NEUTRAL POSITION RESET

If the L or R Buttons are pressed or the Control Stick or C Stick are moved out of neutral position when the power is turned ON, those positions will be set as the neutral position, causing incorrect game control during game play.

To reset the controller, release all buttons and sticks to allow them to return to the correct neutral position, then hold down the X, Y and START/PAUSE Buttons simultaneously for 3 seconds.



The official seal is your assurance that this product is licensed or manufactured by Nintendo. Always look for this seal when buying video game systems, accessories, games and related products.



Nintendo does not license the sale or use of products without the Official Nintendo Seal.

**Important Legal Information**  
 Copying of any video game for any Nintendo system is illegal and is strictly prohibited by domestic and international intellectual property laws. "Back-up" or "archival" copies are not authorized and are not necessary to protect your software. Violators will be prosecuted. This video game is not designed for use with any unauthorized copying device or any unlicensed accessory. Use of any such device will invalidate your Nintendo product warranty. Nintendo (and/or any Nintendo licensee or distributor) is not responsible for any damage or loss caused by the use of any such device. If use of such device causes your game to stop operating, disconnect the device carefully to avoid damage and resume normal game play. If your game ceases to operate and you have no device attached to it, please contact the game publisher's "Technical Support" or "Customer Service" department. The contents of this notice do not interfere with your statutory rights. This booklet and other printed materials accompanying this game are protected by domestic and international intellectual property laws.  
 Rev-D (L)



**THIS GAME SUPPORTS GAME PLAY WITH ONE PLAYER AND CONTROLLER.**



**THIS GAME SUPPORTS SIMULTANEOUS GAME PLAY WITH ONE, TWO, THREE OR FOUR PLAYERS AND CONTROLLERS.**



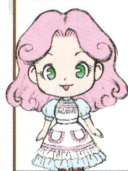
**THIS GAME REQUIRES A MEMORY CARD FOR SAVING GAME PROGRESS, SETTINGS OR STATISTICS.**



Harvest Moon, Natsume and Serious Fun are registered trademarks of Natsume Inc. ©2006 Natsume Inc. ©2006 Marvelous Interactive Inc. All Rights Reserved.

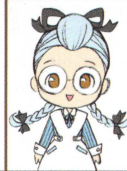


NINTENDO, NINTENDO GAMECUBE AND THE OFFICIAL SEAL ARE TRADEMARKS OF NINTENDO. © 2001 NINTENDO. ALL RIGHTS RESERVED.



### Nina

Sweet little Nina lends a hand with the plants at the Spring Farm. Fresh flowers are her favorites.



### Gina

Gina spends most of her day quietly looking after Dia. You'll need to befriend Alex to meet her.



### Ann

Ann likes inventing stuff in the backroom of the Junk Shop or she's out digging and exploring in a cave.



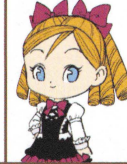
### Dia

One of the most reclusive characters in Flower Bud Village, Dia moves in after Alex expands his practice.



### Ellen

Ellen works at the Blue Sky Ranch and loves looking after animals. She also likes to bake sweet confections.



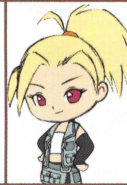
### Katie

Katie arrives in the village after Carl opens his café. She's a talented cook who likes to bake cakes.



### Maria

Mayor Theodore's daughter runs the library. She's well-read and gives all discussions serious thought.



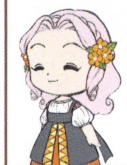
### Gwen

Nobody knows horses quite like Gwen. She's Woody's granddaughter and she helps with the cooking at the Perch Inn.



### Eve

Eve tends tables at the Moonlight Café and loves listening to people who have interesting stories.



### Lyla

Lyla opens her flower shop after you ship plenty of flowers and berries.



### Marry Jamie?

Opposites attract, so stop shouting "No Way!" Jamie is always marriage material.

## A Baby!








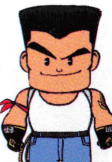
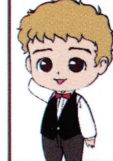

Just because you beat your rival suitors and married the man or woman of your dreams doesn't mean that you'll live happily ever after--yet! You'll soon discover that there's a baby on the way, so start making room for a furnished nursery!



# Wedded Bliss

So many suitors, so much time! That's right--if you want to win the favor of a local sweetheart, you'll need to spend time figuring out where they go and what they like, then you'll have to do the right things to win at least eight hearts.

Woody won't even sell you a double bed until you expand your main house to Level 3. If you manage to accomplish all those feats and have at least thirty musical notes, Mayor Theodore will deem you worthy of a Blue Feather. It's the precious item you'll need to pop that important question.

 <p><b>Blue</b> Blue takes his farm work very seriously and spends most of the daylight hours around the Blue Sky Ranch.</p>	 <p><b>Dan</b> Dan is an easygoing drifter who is always looking for a way to make some easy money without work.</p>
 <p><b>Joe</b> If Joe isn't working as an apprentice for Woody, he's usually prowling around streams with a fishing rod.</p>	 <p><b>Ray</b> Ray is an experienced angler who spends all hours casting to rising fish along the Sunny Lake shoreline.</p>
 <p><b>Kurt</b> Quiet and thoughtful, Kurt works hard as Woody's apprentice. He often explores caves on his days off.</p>	 <p><b>Basil</b> A wandering botanist, Basil spends most of his hours between the caves and around Sunny Lake.</p>
 <p><b>Alex</b> Alex is the first person you'll see if you ever faint from exhaustion. He spends his days off at the lake.</p>	 <p><b>Bob</b> When Bob isn't delivering local produce from shipping bins, he's digging up stuff in a cave or two.</p>
 <p><b>Carl</b> Carl tends the counter at the bar, but his real dream is to one day open his own café in the village.</p>	 <p><b>Louis</b> Moonlight Beach fireworks drew Louis to the village, but perhaps you can give him other reasons to stay.</p>

## Table of Contents

Your Nintendo GameCube Controller .....	2
New Plantings .....	3
Game Menus .....	4
Town Map .....	8
Home, Sweet Home .....	10
Eating and Cooking .....	12
Growing Crops .....	13
Tools .....	16
Building Your Dreams .....	18
Raising Animals .....	19
Fishing .....	22
Mining .....	23
Free the Harvest Goddess! ....	24
Rowdy Rivalries! .....	25
Festivals .....	26
Befriend Wild Animals .....	27
Wedded Bliss .....	28
Multiplayer Mini Games .....	30
Warranty .....	31



# Your Nintendo GameCube Controller

Whether it's along the ocean, beside the river or near the middle of town, farming is tough work, but there has never been an easier controller configuration for a Harvest Moon game. You'll find plenty of helpful info diagrammed below, but the best way to master everything is with a little hands-on play!

## L Button

Press the L Button to whistle for your dog, horse and/or pig. This button also flips through menu screens.

## Z Button

Use the Z Button to see the property boundaries and the names of the various characters and animals.

## R Button

Target a specific area on the ground by pressing the R Button. This allows for accurate fieldwork during plantings. This button also flips through menu screens.

## Y Button

Access all your important information by pressing the Y Button to bring up the Game Menus.

## X Button

Tap the X Button to equip a selected rucksack item. Press the X button again to use the equipped item. Push the X Button to ride the horse.

## A Button

Use the A Button to pick up and drop items. You can also use it to interact with folks or examine objects.

## Control Stick

Use the Control Stick for walking around and scrolling through game menus.

## C Stick

Flick the C Stick to cycle through items in your inventory.

## B Button

Use the B Button to move items from your hands to your rucksack. It also cancels your menu choices.

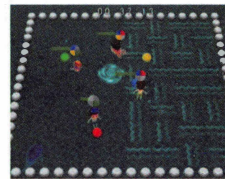
## + Control Pad

Improve your view by pressing up or down on the + Control Pad to zoom in and out.



## Time and Place

Flower Bud Village and Moonlight beach are two favorite spots for festivals, but there are a few special traditions you'll have to celebrate on your own terms. Kicking off the Thanksgiving Festival only begins after you bake a cake for someone special.



## Unlock Mini Games!

Besides the benefit of meeting your neighbors, attending a few festivals will open special mini games. For example, attending the Beach Festival opens a swimming mini game that will help you practice. You might even beat Jamie at next year's festival!

## Befriend Wild Animals

Before you can play a Magical Melody you need to live in harmony with all animals. You gain critter trust by picking them up, but you'll make a lasting impression by feeding them their favorite foods. Move the cursor to the animal icon on the Villagers menu to see which animals like you the most.



## A Little Love

Unlike farm animals, wild critters are tougher to track down for quality cuddle time. That's why it's important to stop one and pick it up on any surprise encounter. You'll win them over faster if you find their favorite foods, but this takes extra research. But remember the animals will not live with you...they live only in nature.

# Festivals

Life would be pretty dull if people just farmed and worked every day in Flower Bud Village. That's why you'll find several special events or festivals planned several times throughout the season. Check your calendar and the village square bulletin board for details.

## Read the Board and Make Deposits

Mayor Theodore isn't just flapping his jaw when he reminds you to check out the bulletin board in Flower Bud Square. Read it and learn about upcoming events. There's also a donation bin where you'll need to put eggs and other festival essentials.



## Plan Your Work Around the Holidays

Just because there are crops in the fields and livestock to be fed doesn't mean that you have to miss out on the festive fun. Check the event times on your calendar and schedule your workload around the festivities. It's also important to remember that all shops are closed on holidays and all important purchases should be made a day ahead. Many farmers arrive just before the end of the event without missing the celebration.



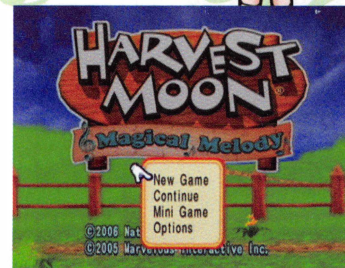
# New Plantings

Harvest Moon: Magical Melody offers gamers more choices than any other game ever produced for the Harvest Moon series! Choose your character's gender then select a plot of land to farm. The fate of the entire village depends on your decisions.



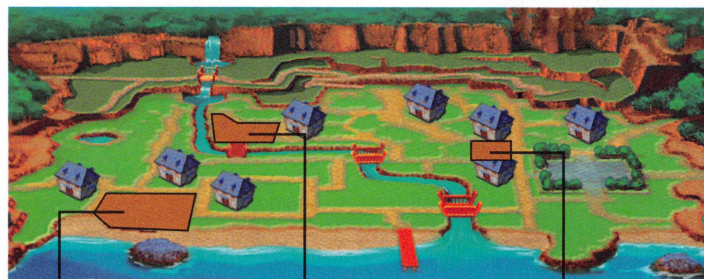
## Be a Boy or a Girl!

Farming is an equal opportunity profession, so it only makes sense that you can begin your career as a boy or a girl character! This will be the first question you'll be asked when you start a new game. Both the boy and girl do the same work and have the same abilities in the game, but your dating prospects depend on your gender.



## Choose Your Farm Location!

Unlike previous games where you were left farming your ancestral lands, you can choose one of three lots in Harvest Moon: Magical Melody. Each plot of land has distinct advantages and disadvantages, so it's important to choose the one that best matches your playing style!



### Ocean Side

While it's the largest lot for miles, this plot doesn't have much fertile land. Raise animals here.

### River Side

Great for anglers, this lot offers a balance of crop and livestock space--but it's a hike to the village.

### Village Center

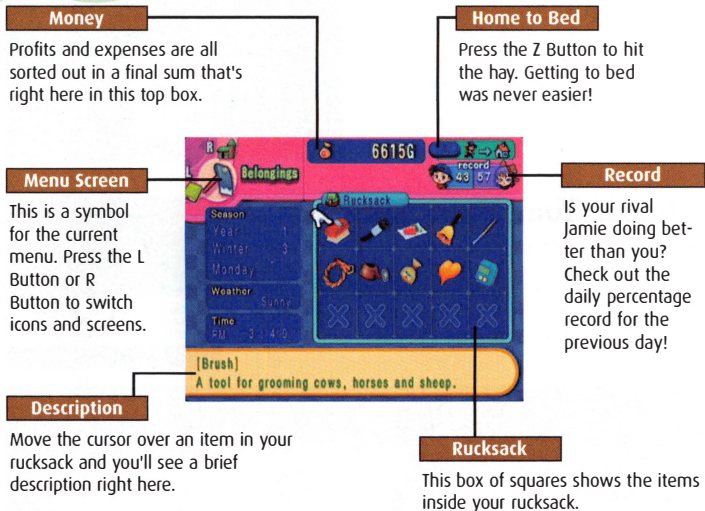
If location matters, shopping and mining are close to this lot. But you'll need to buy extra elbow room.

# Game Menus

Now where did you put that axe? Is your new cow as happy as the others in your growing herd? How many turnips did you ship last spring? Press the Y Button to access your farm menu screens for these answers and a bushel of other statistical information that will keep you ahead of your rival!

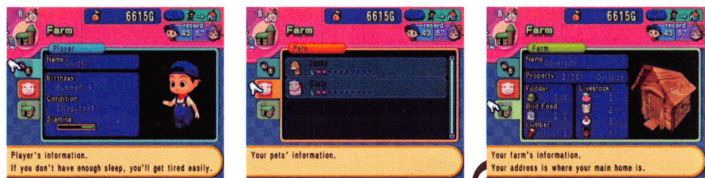
## Belongings

When you press the Y Button you'll see the Belongings menu and everything inside your rucksack. Of all the menus in the game, this is the one that you'll check the most. It might look a little complicated, but the diagram below sorts everything out.



## Farm

Tap the R Button once on the Belongings menu and you'll switch to the Farm menu. This is where you'll find information regarding your stamina, pet happiness and a statistical overview of your fodder, bird feed, lumber and farm property area.



# Rowdy Rivalries!

Don't let the placid pastoral surroundings fool you: Farming is competitive business and there are bushels of agrarian aggression out there. When you're not slugging it out with Jamie in contests and produce output, you're protecting your future spouse from other suitors!



## Jamie

Your biggest rival by a country mile is Jamie. No matter which gender you select for your character, Jamie is always the opposite sex. The Memo menu compares your revenue with Jamie's earnings, but in the end don't be surprised if you're friends--or even married!

## Other Local Rivalries

That sense of competitive spirit isn't just between you and Jamie. Befriend one neighbor by more than four hearts and somebody might have something to say about the situation. While these rivalries are not as contentious as your struggle with Jamie, it's fun to experiment and create a little gossip.



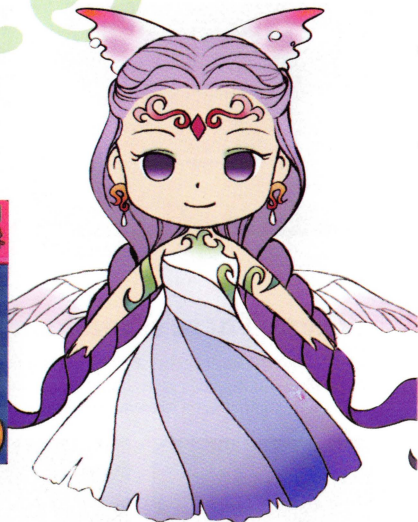


# Free the Harvest Goddess!

Many seasons before you came to Flower Bud Village, the Harvest Goddess turned to stone because no one except the Harvest Sprites believed in her. While Jamie has tried to help the Sprites revive her, the Harvest Goddess remains a statue at a nearby spring.

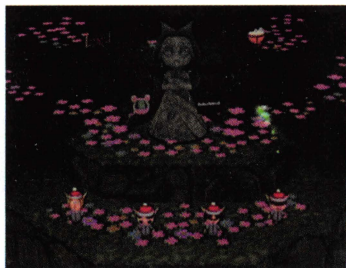
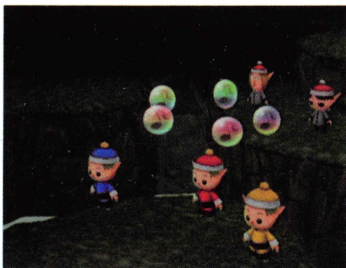
## Collect all the Notes!

You can revive the Harvest Goddess by collecting the lost notes that create a magical melody. Check your progress on the Notes menu and use the cursor to check any notes that you're missing.



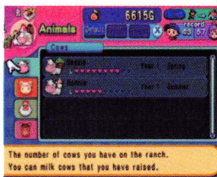
## Notes Create Musical Instruments!

Each time you collect five notes the Harvest Sprite can use them to create a musical instrument. After all the notes are transformed into a symphony, the sprites will be able to play a magical melody that will release the Harvest Goddess.



## Animals

Press the R Button once on the Farm menu and you'll move along to the Animals menu. Here you'll see the overall happiness of your cows, sheep, chickens and horses. The more hearts, the better the milk, fleece and eggs your farm will produce!



### Horse Conditioning

Does your horse have a chance at winning a horse race? The more stars that you see here, the faster you'll ride! **HINT:** The more you ride...the more stars you get!

## Shipped Items

Press the R Button on the Animals menu and you'll switch to the Shipped Items menu. This is a statistical scorecard that shows exactly how many crops, fish, food, ore and other special processed items that you have dropped into the shipping bin.

### List Sorting

If you want to specialize in shipping specific produce, press the X Button to rearrange your Shipped Items lists.



## Village Map

Tap the R Button on the Shipped Items menu and you'll see an overview of the Village Map. Use the Control Stick to move the red cursor over items and you'll see a brief description of the map areas at the bottom of the screen. This is a great tool for spotting the new arrivals who move to your village as your farm grows.



### Move the Cursor

Slide the red arrow cursor over the map with the Control Stick and you'll see a description for each icon.

## Notes

You'll need to find 50 notes to rescue the Harvest Goddess. How many have you collected so far? Press the R Button while you're at the Village Map and you'll see the Notes menu display. If you move the gloved icon over a note, you'll see a brief description of how you received it.



## Mining

While busting up rocks and crystals with a hammer might be a lot of work, it's a great way to make money on a rainy day. Stand on cracks to explore deeper levels because the lower you go the more valuable gems and ores you'll find.



## Two Mines!

Three seasons of the year the cave north of Flower Bud Village is the most popular dig around, but Sunny Lake freezes solid in the winter, making it an easy walk over to the Lake Cave. This is the coolest place for any treasure hunter.

## Where There's Smoke...

Digging into the local caves isn't like playing in a sandbox--there's plenty of danger down there. Mysterious gasses were trapped ages ago in the rock and any errant hammer blow can render you helpless! Note the symptoms outlined below:



Black smoke gets in your eyes!



Purple smoke can confuse you.



Orange smoke will paralyze you.



Yellow smoke makes you move faster.



Pink smoke restores your strength.



The white smoke nullifies other gas effects.

# Fishing

The livestock are fed. The fields are watered. You just ate lunch and have the whole afternoon in front of you. There's probably no easier way to make money than by casting to the shadows roaming beneath the surface of a nearby stream-- and it's a pastime that's less strenuous than digging for treasure in a cave.



## How to Cast and Catch

Equip your rod and face the stream before pressing the X Button. Let the bobber drift and you'll see an exclamation point above your farmer's head as a fish approaches. Wait for the bobber to sink and hold down the X Button to reel in!

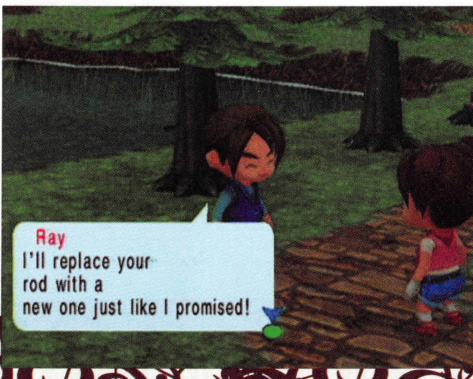


## Befriend the Dolphin

Take a short walk to the end of the long pier and you'll spot a dolphin in the water. He isn't the catch of the day, but if you feed him fish he might give you a ride to an island where the fishing is phenomenal!

## Ray the Master Rod Maker

If you plan on fishing regularly, stroll over to Sunny Lake and introduce yourself to Ray. Depending on the size and quantity of fish caught, he'll reward you with a copper fishing rod.



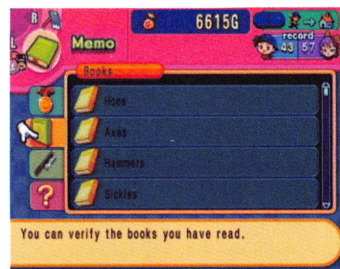
# Villagers

Hit the R Button on the Notes menu and you'll switch to the Villagers menu. The number of hearts by each person or animal indicates how much they like you. Doing good deeds or giving gifts will add extra hearts!



## Memo

Press the R Button on the Villagers menu and you'll see the Memo screen. This is a complete statistical breakdown of your farm records compared to your rival's farm, plus extra info on books you read, dishes you can cook and other accomplishments.



# Town Map

If the map below looks a little different from the one on your map menu, it's because citizens will move into or out of the village depending on potential business opportunities. The more items that you ship, the more chance new neighbors will settle down in the valley.

## 1 Your House

There are three possible locations on the map for your house, so each spot is highlighted with an orange circle. Which one will you choose?

## 2 Spring Farm

Need seeds? How about some fertilizer? Need tasty dinner ingredients? Spring Farm has plenty of produce-related merchandise for every farmer.

## 3 Blue Sky Ranch

If you're looking for quality livestock or feed, tools and miracle potions, the Blue Sky Ranch is the place to go for all your animal-related needs.

## 4 Blacksmith

The Blacksmith won't immediately set up shop when the game begins, but his services are essential for upgrading the quality of your farming tools.

## 5 Workshop

Woody is a master carpenter and knows everything about remodeling buildings. He does real estate on the side, so he's always willing to sell land.

## 6 Jamie Ranch

Your rival Jamie moved here before you did and set up a pretty good farm. Check out your competition's spread for a few helpful farming ideas.



# SHEEP

## Wool-sale Prices

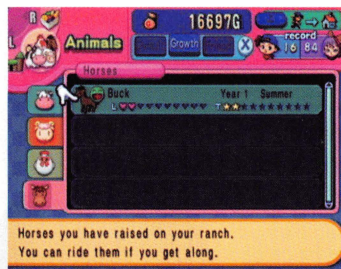
Sheep require a quite a bit less work than tending cows, but you won't be able to earn the same sort of daily profit. Brushing your sheep will improve the quality of their wool, but the best way to raise your bottom dollar is by purchasing a yarn maker and a dye pot.



# HORSES

## It Takes Two Hearts to Ride

You won't be able to saddle up and ride your horse until you see two hearts by the horse's name on the Animals menu. Regular riding is important because it improves your horse's chance at winning a spring or fall horse race.



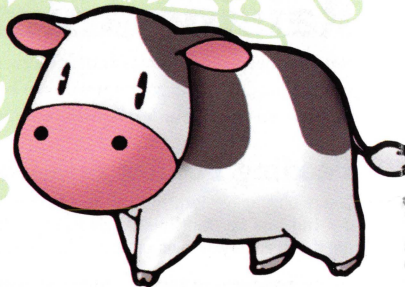
## Race Time!

Once your horse is an adult you can enter it in the local horse races held at the village square. You can only enter one race, but the prizes are worth the training!

## COWS

### Fresh Milk

It's udderly impossible to milk a cow right after you buy it from the Blue Sky Ranch, but give her a few weeks and she'll come around. The quality of milk produced by your herd depends on their happiness, so it's important to brush and examine your cows when you feed them daily. Cows will only give milk after eating or being fed.



### Cheese and Butter

If you take the time to earn and save your cash, you'll be able to buy cheese and butter machines. Because cheese and butter are more valuable than fresh milk, you'll find that making the investment quickly pays off with plenty of extra mooala.



## CHICKENS

### Quick Cash Served Sunnyside-Up

Nothing gets you into the livestock business faster than buying a coop and a chicken. Place an egg in the incubator in the corner and you'll soon be on your way to owning a flock. It's also a good idea to buy the mayonnaise maker from the Junk Shop for those extra eggs. Move your flock outside on sunny days and they'll happily scratch up a meal among any weeds around your coop. **NOTE:** Chickens do not lay eggs outside, only in their chicken coop.



### 7 Junk Shop

If it's a tool or a gizmo, you'll find it at the Junk Shop. Look here for cookware and baby toys, too.

### 8 Mayor's House

Theodore the Mayor lives here. He's always willing to give you a bit of advice for your farm.

### 9 Town Square

The village town square is usually the place to be during a festival. Read all about upcoming events on the town square bulletin board.

### 10 Clinic

This is where you'll regain consciousness whenever you faint from exhaustion. Dr. Alex is a patient man.

### 11 Harvest Goddess Spring

This is where the Harvest Goddess rests. Visit this spring every time you collect five additional notes.

### 12 Sunny Lake

Expert anglers like Ray seem to prefer the fish in Sunny Lake's stillwaters over the trout in the local stream.

### 13 Mt. Moon

On a clear day you can see a lot from here—and even open a mini game. The climb is worth the time.

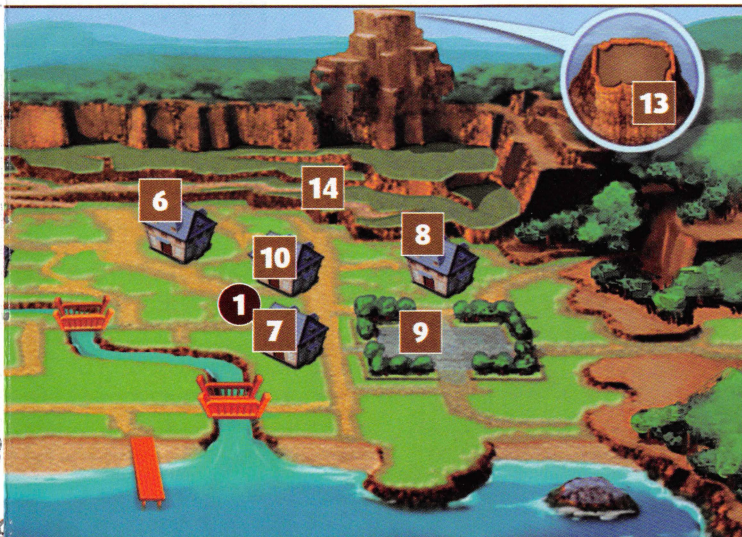
### 14 Moonlight Cave

Ore and other precious buried items are always in season deep within the Moonlight Cave. Just watch where you dig so you don't tap into some noxious underground gas.

### 15 Lake Cave

Treasure hunters and miners can't reach the Lake Cave until the surface of Sunny Lake freezes solid in winter.

**NOTE:** As others move in new stores will open.

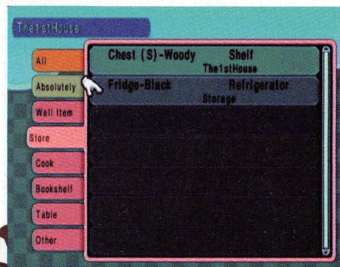
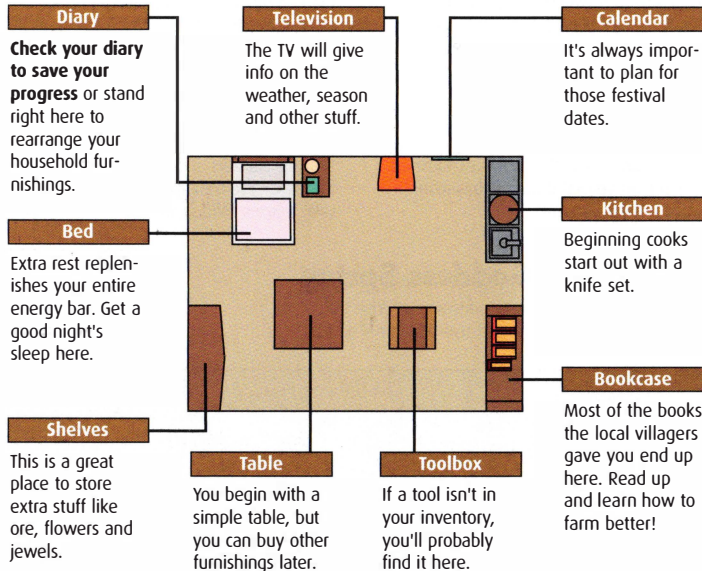


# Home, Sweet Home

All great farming ventures have humble beginnings, so it only makes sense that your new cottage is the smallest abode in the village. Don't fret--there will be plenty of opportunities to unleash your inner designer, especially after you check out some of the additional furniture pieces on sale at the Junk Shop and Woody's.

## Interior

The map below shows the default setup for your house but you can rearrange the furnishings by choosing "Furniture" at your diary. Use the Analog Stick and R Button to move and turn various items and fixtures.



## A Free 'Fridge!

You don't have to buy a refrigerator! The movers put your refrigerator in storage when you moved. Go to your diary and choose the "Furniture" option to add it to your house.

# Raising Animals

Raising sheep, cows, horses and chickens requires plenty of extra care and money, but the produce from your animals can keep your farm producing plenty of moola even when your fertile fields are covered with snow.

## Feeding Fodder and Chicken Feed

Before buying livestock you'll need a barn or a coop and a huge supply of feed and fodder. The Blue Sky Ranch sells animals and extra food, but you'll save money in the long run if you grow your own grass and buy a windmill to grind up fresh corn.



## Find a Cure for Sick Animals

Leaving livestock in the rain will make them ill. In addition to moving your animals in every night, be sure to stock up on extra doses of the animal medicine sold at the Blue Sky Ranch.



## Animals Reign?

If you can't lead your first horse, cow or sheep, it's because Hank forgot to give you the reins. Feed your livestock and leave them in the barn. Hank will remember in the morning.

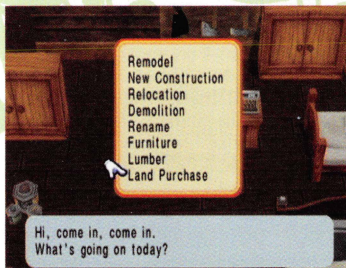


## Miracle Potions

If you want a prize winning cow, you'll need the happiest heifer in the land. Buy the Miracle Potion sold at the Blue Sky Ranch and let your cow give birth to a calf. You'll be happy, too!

# Building Your Dreams

You only construct buildings on the land that you own. If you didn't pick a lot in the village, you may find that you have enough space for a chicken coop or other small improvements, otherwise you'll have to scrimp and save your precious profits until you have enough money to buy a plot of land from Woody.



## Buy Land

Your first step in farm expansion is a land purchase. Woody the carpenter does a little real estate on the side and he'll gladly set up a transaction for a vacant lot in your neighborhood.



## Gather Wood

Woody will sell you the wood to build your expansion, but you'll find that the most affordable approach is to gather wood with your axe. Set aside time for this task whenever possible.

## Woody Works

Once you have the wood and the funds, Woody will help you plan what and where you'll build your farm expansion. Keep in mind that construction a day or two before you can move in.



# Stuff on the Outside

In addition to indoor furnishings, you'll also find some practical essentials just outside your front door. The photo below shows the four most important features you'll always need for your farm--no matter how large your prosperous garden grows.

## Lumber Shed

Any wood that you chop automatically ends up in the lumber shed behind your house. You can use your wood for stakes around the property, but most farmers save their lumber shed stock for big expansions and remodeling projects.

## Trash Can

Nobody likes a litterbug and few folks want to live in a messy village. Put litter in the trashcan.

## Mailbox

Check your mailbox for additional news from your neighbors. All opened letters end up inside on your bookcase.

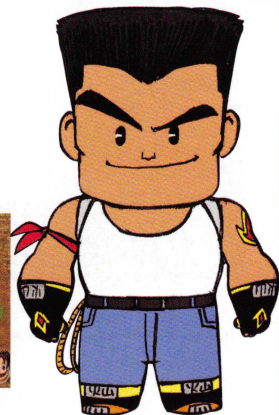


## Shipping Box

Put your fish, produce and valuable items in the Shipping Box for delivery. You'll receive payment the next morning.

## Your Shipping Box

Nothing makes Bob the shipper happier than a Shipping Box full of produce, and the bigger the variety of goods you ship, the more likely your village will attract more people. You'll see how much every item is worth as you drop it inside the bin.



# Eating and Cooking

Your stamina meter in Harvest Moon: Magical Melody plays a bigger role than it has in any other Harvest Moon game, so if you want to work hard all day, you'll need to save some of your produce for your meals. Nothing replenishes your stamina better than a good home-cooked dish served up fresh from your kitchen.



## Forage for Food

The easiest way to replenish the stamina meter in the lower right corner of the screen is by foraging for food you don't have to cook, like honey and berries. Forage food changes each season, although you won't find much in the winter. Frugal farmers often take the food back to the shipping bin and replenish their stamina by going to bed.



## Campfire Cooking

After you buy a larger Rucksack from the Junk Shop, consider carrying around what the locals call a "Bonfire Set"—a box of matches. Now you can build yourself a campfire next to the river and cook up some of the Dace or less profitable fish. It's a great way to fix an affordable meal that replenishes stamina without draining your pocketbook.



## Kitchen Cuisine

After a few weeks of hard work and affordable meals, you should have a little extra money left over to make kitchen improvements. While your knife set might be good for cutting up fish for sashimi, remodeled kitchen space for other cooking appliances will help you make heartier meals that replenish more of your stamina bar in one sitting.

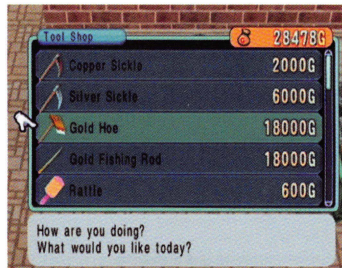
# Upgrading Your Tools

Before you can upgrade a tool you'll need to know how to use it. At the bottom of each tool description is a long colored bar and a blue line that indicates your skill level. As the line grows to the right and into a new color, a blacksmith can upgrade your tool—or you can buy a tool at the Junk Shop.



## Time Well Spent

Using a tool repeatedly moves the icon on the multicolored bar beneath the tool description. A blacksmith can upgrade the tool once the line reaches a new color on the experience bar.

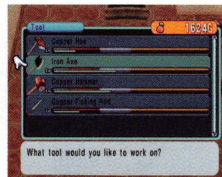


## Junk Shop Deals?

If you have the money and don't have a local blacksmith, you can buy an upgraded tool at the Junk Shop. While buying new upgraded tools isn't cheap, you'll never wait for an upgrade.

## Blacksmith Upgrades

The most affordable way to upgrade your tools is through a blacksmith. These hardworking businessmen will never consider settling down in your town until you begin shipping ore from the mine on a regular basis. Blacksmiths charge an upgrade fee for tools, but you save money by supplying them with the required ore when placing your order.





# Tools

Quality tools are essential for successful farming. Unfortunately the folks who set up the Ranch Plan promotion didn't know this when they stocked your toolbox with cheap iron tools. These burly implements won't rust away in the rain, but they're heavy and quickly drain stamina. You'll need to upgrade soon.

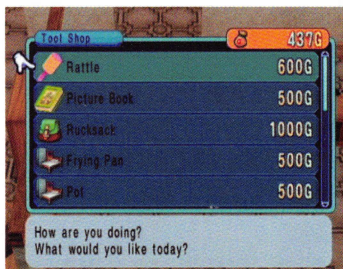


## Starter Tools

The toolbox inside your house has everything you'll need to start a farm, but these implements are all made from heavy, stamina-draining iron. The colored bar beneath the tool description indicates your skill level for each tool.

## Other Essential Tool Purchases

Depending on how you plan to farm you'll need additional specialty tools. Places like the Blue Sky Ranch offer important essentials for raising animals. The Junk Shop carries a variety of unique items. You might get a tool or two as a gift.



# Growing Crops

You don't have to build a farm to grow crops, but it's certainly an easy way earn money during the warmer seasons of the year. You'll find varied soil conditions depending on where you bought your house, so try to plot your garden plots in the best spaces where the dirt looks dark and rich in nutrients.



## Land Grab

If you built your house in the village, you'll quickly run out of room to plant crops on your property. Luckily for you the locals are not picky--especially if a hardworking farmer is trying to improve the town. Press the Z Button and you'll see green areas around town. These are public land lots where farming is allowed--but you can't build here.

## Till, Plant, and Water



There are three kinds of soil. The easiest way to keep them straight is that the darkest soil is the best and the lightest dirt is the worst. Plants in rich soil mature faster than the rest.

One bag of seed covers a 3x3 square area of tilled land, but once crops mature it's tough to water the plant in the middle square. Some farmers prefer to plant in rows, but it's up to you.














When you plant your crops in rows, you'll find that everything is easy to water and you'll water everything faster than a field of squares. Luckily for you, you don't need to water if it rains.



## Fertilize

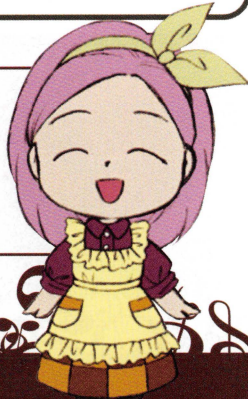
While it's too expensive for most first-season farmers, fertilizer spread on an established farm can help improve crop quality, especially with produce grown in light-colored, nutrient-depleted soil. It's an essential tool for beating your rival. The Spring Farm will start selling fertilizer after you ship 10 Limestone.

# Seeds and Seedlings














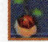
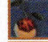

<b>SPRING</b>	<b>COST</b>
 Turnip Seed	20G
 Potato Seed	30G
 Cabbage Seed	40G
 Bread Fruit Seed	60G
 Spring Seed Pouch	60G
 Moondrop Flower Seed	20G
 Green Herb Seed	20G
<b>SUMMER</b>	<b>COST</b>
 Tomato Seed	50G
 Corn Seed	40G
 Onion Seed	20G
 Cocoa Seed	50G
 Summer Seed Pouch	60G
 Pinkcat Flower Seed	20G

## More Spring Farm Goods!

If you decide that you don't want to grow crops you can buy plenty of fresh produce for cooking at the Spring Farm. Scroll down through the seed list menu and you'll find an assortment of fresh, quality produce for your favorite cooking recipes.



# Seeds and Seedlings

<b>FALL</b>	<b>COST</b>
 Eggplant Seed	40G
 Pumpkin Seed	70G
 Yam Seed	30G
 Bell Pepper Seed	40G
 Carrot Seed	40G
 Spinach Seed	40G
 Fall Seed Pouch	60G
 Orange Herb Seed	20G
<b>ALL-SEASON ITEMS</b>	<b>COST</b>
 Grass Seed	50G
 Fertilizer	150G
 Mora Seedling	300G
 Chestnut Seedling	350G
 Orange Seedling	360G
 Grape Seedling	370G
 Apple Seedling	380G
 Evergreen Seedling	200G