

**ULTRA**<sup>TM</sup>  
GAMES

**ULTRA**<sup>TM</sup>  
GAMES

NES-U3-USA

HOW TO PLAY

Defender of the Crown<sup>TM</sup>

Nintendo® and Nintendo Entertainment System® are registered trademarks of Nintendo of America Inc.

ULTRAGAMES<sup>TM</sup> is a trademark of Ultra Software Corporation.

Defender of the Crown<sup>TM</sup> is a trademark of Cinemaware Corp.

©1989 Ultra Software Corporation

Printed in Japan

### ULTRA SOFTWARE CORPORATION LIMITED WARRANTY

Ultra Software Corporation warrants to the original purchaser of this Ultra software product that the medium on which this computer program is recorded is free from defects in materials and workmanship for a period of ninety (90) days from the date of purchase. This Ultra software program is sold "as is" without express or implied warranty of any kind, and Ultra is not liable for any losses or damages of any kind resulting from use of this program. Ultra agrees for a period of ninety (90) days to either repair or replace, at its option, free of charge, any Ultra software product, postage paid, with proof of date of purchase, at its Factory Service Center.

This warranty is not applicable to normal wear and tear. This warranty shall not be applicable and shall be void if the defect in the Ultra software product has arisen through abuse, unreasonable use, mistreatment or neglect. **THIS WARRANTY IS IN LIEU OF ALL OTHER WARRANTIES AND NO OTHER REPRESENTATIONS OR CLAIMS OF ANY NATURE SHALL BE BINDING ON OR OBLIGATE ULTRA. ANY IMPLIED WARRANTIES APPLICABLE TO THIS SOFTWARE PRODUCT, INCLUDING WARRANTIES OF MERCHANTABILITY AND FITNESS FOR A PARTICULAR PURPOSE, ARE LIMITED TO THE NINETY (90) DAY PERIOD DESCRIBED ABOVE. IN NO EVENT WILL ULTRA BE LIABLE FOR ANY SPECIAL, INCIDENTAL, OR CONSEQUENTIAL DAMAGES RESULTING FROM POSSESSION, USE OR MALFUNCTION OF THIS ULTRA SOFTWARE PRODUCT.**

Some states do not allow limitations as to how long an implied warranty lasts and/or exclusions or limitations or incidental or consequential damages so the above limitations and/or exclusions of liability may not apply to you. This warranty gives you specific rights, and you may also have other rights which vary from state to state.

This game is licensed by  
Nintendo for play on the



ULTRA Software Corporation, 240 Gerry Street, Wood Dale, IL 60191, 312 350 1268

### COMPLIANCE WITH FCC REGULATIONS

This equipment generates and uses radio frequency energy and if not installed and used properly, that is, in strict accordance with the manufacturer's instructions, may cause interference to radio and television reception. It has been type tested and found to comply with the limits for a Class B computing device in accordance with the specifications in Subpart J of Part 15 of FCC Rules, which are designed to provide reasonable protection against such interference in a residential installation. However, there is no guarantee that interference will not occur in a particular installation. If this equipment does cause interference to radio or television reception, which can be determined by turning the equipment off and on, the user is encouraged to try to correct the interference by one or more of the following measures:

- Reorient the receiving antenna
- Relocate the NES with respect to the receiver
- Move the NES away from the receiver
- Plug the NES into a different outlet so that computer and receiver are on different circuits.

If necessary, the user should consult the dealer or an experienced radio/television technician for additional suggestions. The user may find the following booklet prepared by the Federal Communications Commission helpful: How to Identify and Resolve Radio-TV Interference Problems. This booklet is available from the U.S. Government Printing Office, Washington, DC 20402. Stock No. 004-000-00345-4.

### SCORES

---

---

---

---

---

ULTRA Software Corporation, 240 Gerry Street, Wood Dale, IL 60191

## ***Treat Your ULTRAGAMES Cassette Carefully***

- This ULTRAGAMES cassette is a precision-crafted device with complex electronic circuitry. Avoid subjecting it to undue shock or extremes of temperature. Never attempt to open or dismantle the cassette.
- Do not touch the terminal leads or allow them to come into contact with water or the game circuitry will be damaged.
- Always make sure your computer is SWITCHED OFF when inserting the cassette or removing it from the computer.
- Never insert your fingers or any metal objects into the terminal portion of the expansion connector. This can result in malfunction or damage.

## ***WELCOME TO THE WORLD OF ULTRA!***

You're now the proud owner of ULTRA's authentic version of Defender of the Crown for the Nintendo Entertainment System.<sup>®</sup> We suggest that you read the following instructions thoroughly before conquering England.

### ***TABLE OF CONTENTS***

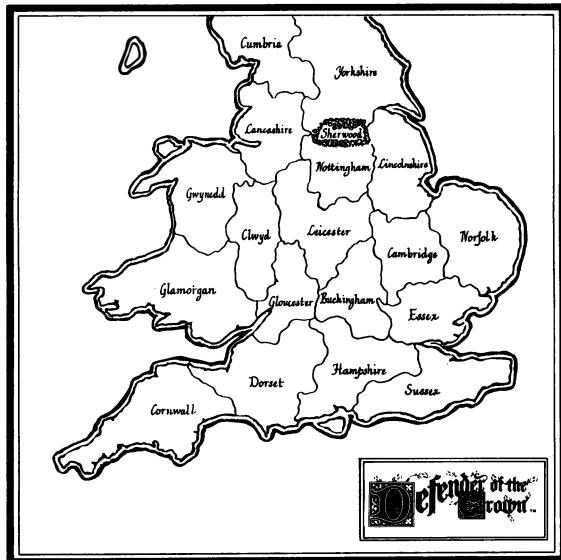
<b><i>THE ENGLISH COUNTRYSIDE</i></b> . . . . .	<b>4</b>
<b><i>INTRODUCTION</i></b> . . . . .	<b>4</b>
<b><i>HOW TO PLAY</i></b> . . . . .	<b>5-6</b>
<b><i>THE 4 ENGLISH LORDS</i></b> . . . . .	<b>7</b>
<b><i>THE TOURNAMENT</i></b> . . . . .	<b>8</b>
<b><i>BUYING AN ARMY/THE CONQUEST</i></b> . . . . .	<b>9</b>
<b><i>RAIDING</i></b> . . . . .	<b>10</b>
<b><i>BATTLES AND CATAPULTS</i></b> . . . . .	<b>11</b>
<b><i>DEFENDING YOUR CASTLE</i></b> . . . . .	<b>12</b>
<b><i>ROBIN HOOD AND THE DAMSEL IN DISTRESS</i></b> . . . . .	<b>12</b>
<b><i>ADVICE FROM THE ROUNDTABLE</i></b> . . . . .	<b>13</b>
<b><i>TAKING CARE OF YOUR GAME</i></b> . . . . .	<b>14</b>



## ENGLAND 1149 A.D.

Ripe with civil war, the once peaceful English countryside is tormented by trampling armies and thundering hooves, and its grassy knolls are stained red by fallen knights and serfs.

The game's map screen displays the whole bloody territory and defines the boundaries of feudal lands. It also shows where castles and garrisons are located, and who lays claim to each territory (blue shields represent Saxon turf, orange flags represent Norman holdings. Your homeland is represented by a bold knight on a trusty white steed).



In the upper-left corner of the map screen, you'll see a table. From there you will select your plan of action: Tournament, Conquest, Go Raiding, Buy Army, Read Map, Pass.

### WHEN HISTORY AND FANTASY WERE ONE

It's a time of legends. A time for heroes. A time of bitter strife, when great men rise above their peers to perform great deeds. Your liege the king is dead, the

As for the damsel of your dreams, you'll have the opportunity to rescue her only if her father thinks you have the nerve to succeed. So be brave, my son, and she'll eventually arrive and take the sting from your wounds.

### ADVICE FROM THE ROUNDTABLE

1. Familiarize yourself with your surroundings. Select READ MAP from the menu. Inspect the territory around your castle, then size up your opponents.
2. Men-at-arms are the least expensive military commodity, and the core of an army's strength, valuable at home for defense or fields of conquest. Fighting on horseback, knights are useful mainly for attack — they can splinter a defending army with a terrifying single charge.
3. Bolster the ranks by shifting men and weapons from your home army, but remember — the careful commander leaves behind a strong force to protect his castle unless he plans to stay close by.
4. Issuing the correct orders at the proper time is the key to battlefield success. Attacking with ferocity is a gamble. It can save a day that appears lost, but can also be the undoing of a great army that might have won with a more conservative approach. Know when to give up the field. Dishonor is preferable to the loss of your last knight.
5. Any castle or territory may be attacked, Norman or Saxon. The reverse is also true — you may be attacked by Saxons, even though they're supposed allies. Chivalry was a club, and some lords did not belong.
6. Select CONQUEST from the menu to see the size of your home army and campaign army. If you have any vassals, their numbers appear in the home army column. Each vassal is equal to one soldier. Use this menu to assign additional forces to the campaign.
7. The courtyard of the enemy's castle is a dangerous place to learn the secrets of swordsmanship. Keep two things in mind and you should live long enough to reap the benefits of experience: first, the best time to thrust is when your opponent's sword is in motion away from yours; second, you must always keep moving.  
So bequeath the ghosts of Camelot.

## DEFENDING YOUR HOME CASTLE OR GARRISON

If you haven't stayed a thought ahead of the enemy, and your home castle is defended by only a handful of wimps, an attack could put a sudden halt to your dreams of conquest. Garrisons can also fall to this kind of poor planning, but without the dramatic ending.

The crossbow scene is seen from your perspective inside the castle walls. The enemy is climbing the walls and firing arrows directly at you (it's kind of a William Tell thing minus the apple).

The strength bar indicates how many men you have left. Your total number of crossbowmen corresponds to the number of men in your castle (not including knights).

This chart applies to the computer's army as well.

Also, the higher your leadership rating, the more quickly you can move your crossbow. The higher your opponent's leadership rating, the more quickly his men will appear and shoot.

Men in Castle	Total Crossbowmen
1 - 9	1 - 9
10 - 25	10
26 - 50	15
51 - 75	20
76 - 125	30
126 - 175	40
176 - 200	50

## ROBIN HOOD AND THE DAMSEL IN DISTRESS

You can get Robin's help a total of three times. He'll help you raid a castle, siege a castle, or fight on the battlefield. To ask for his assistance, move the cursor to Sherwood Forest anytime you are prompted to select a territory. You'll then see Robin, receive his message, and finally return to the map where you'll select the territory you wish to harass.

throne vacant. Britain enters a season of destruction, a bitter winter that can end only when the last brave Saxon knight lies dead or the Norman castles lie in heaps of rubble, emptied of their foul oppressors who have enslaved your people.

It's a time when foreign invaders shall learn the truths administered by the shining blades of Saxon swords. It's a time when heroes are made and damsels saved.

## HOW TO CROWN YOURSELF

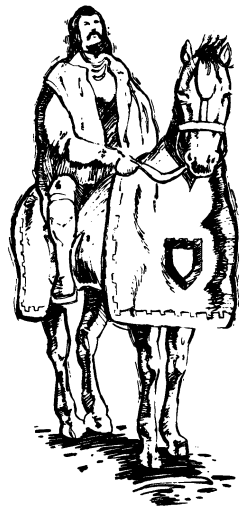
Six great lords vie for the English throne; their castles dominate the island nation. In the south there are the three Norman castles, to the north, the Saxon fortresses.

Your goal is to crush the three Norman castles, thus claiming the missing crown. To do so, you must accumulate wealth by conquering lands and raiding castles. With this stash of cash, you must build armies for further conquests and defense of the territories you've already claimed. The other Saxons are initially your allies, but remember: they want to be king of England as well.

## HOW TO PLAY

Strategy is as much a part of valor as strength and a sword. A great king has plenty of brains to back his boasting, because he knows that words can only lead soldiers into battle. While decisions lead them on to victory.

After the opening screen appears, take command and advance to the next screen by pressing the A Button. In general, you may press the A Button to change screens throughout the game.



When the first picture of a knight appears, you may choose to play his role by pressing the A Button. To cycle through the other 3 alternative knights, press the Control Pad or Select Button. What's important to note about each are his strengths or weaknesses in Leadership, Jousting and Swordplay. (The easiest Knight to win with is Wilfred of Ivanhoe. The toughest challenge is with Wolfric the Wild.)

Once you've knighted yourself, advance through Sherwood Forest, then on to the status screen. This screen will keep you informed of how you're faring throughout the game. It tells you the date, your gold and income supply, your ratings status, the number of knights, soldiers and catapults you have in your conquering army, and the number of soldiers you've left at home to defend your castle. It also displays the fair maiden, if you're brave enough to rescue her when called upon.

After learning a little bit about yourself, advance to the map screen and begin your quest for the crown. From there, make strategic selections by moving the sword up or down with the Control Pad. Press the A Button to lock in your decision. Next, follow the directions given to you on the screen. Use the Control pad to maneuver the cursor, and lock in your commands by pressing the A Button.

Every decision you make is considered a TURN. For each turn you take a month passes inside the computer. During this time the computer takes its turn, initiating battles that randomly rage across the land. You'll see flags and shields appearing and changing. These are the computer's conquests.

Remember, for every Saxon decision you make, the computer counters with Norman ideas. Thus be advised to always stay one thought ahead.

- **Hold Your Ground** — Most effective when you are a good to excellent leader and you're fighting a weaker or equal leader with less men.
- **Ferocious Attack** — Risky. If you're a weak leader or are going against a larger force, it may work. But often it leaves you with casualties galore.
- **Bombard** — Best used when you have numerous catapults.
- **Outflank** — Most effective when you have a low leadership rating but outnumber the opposing army. Might also work for excellent leader who is outnumbered.
- **Retreat** — You may run away and save your men, but that will obviously destroy your leadership rating.

## **CATAPULT SIEGES**

You must buy a catapult and transfer it to your campaign army before you can attack a territory occupied by a castle. When the siege begins, choose your ammunition — BOULDERS, GREEK FIRE, OR DISEASE.

Your objective is to do as much damage as inhumanly possible to the enemy before the open field battle begins. You must first knock a hole in the wall with a boulder before you launch fire or disease.

Press the A Button to pull the catapult's lever back. Hold it down until you're ready to fire, then release it.

Try to hit the top of the castle wall first, then lower your aim to destroy it piece by piece. Disease will kill large numbers of men if used early (because it has time to spread and fester). Fire will eliminate 10% of the castle guards.

Select CEASE FIRING if you want to end the siege early.

## IT'S A RAID!

Under the cover of darkness you decide to raid an enemy castle (or for that matter, an allied stronghold). This is purely a greedy decision, a plundering mission for gold, loot, the big bucks! To illegally raise this extra cash for your army, select RAIDING from the main menu, then choose the lord you want to victimize by using your Control Pad to line up the cursor with his castle.

Fair warning. This isn't as simple as taking candy from a baby. You must defeat three courtyard soldiers, and then enter into the fortress where you'll duel with the captain of the guard. It's extremely difficult for a weak swordfighter to raid the castle of a strong swordsman. But with much practice, it's possible.

Move the Control Pad right and left to advance and retreat. To escape, move to the far left of the screen . . . at the cost of leadership points. When you close in on an opponent, press the A Button to attack. To parry a guard's thrust, press the A Button while holding the Control Pad in the up position. The guard can't strike you when you're parrying. Of course, you can't stab him in that position either.

The best strategy for winning your raid is to lunge and strike, then retreat a step. Another piece of sound advice: watch 16 hours of back-to-back Erroll Flynn swashbuckling movies—that'll really teach you how to swordfight!

## BATTLE TO THE BITTER END

Animated pictures represent the armies. The actual battle randomly takes place inside the computer. Each soldier represents 25 men (or less) and each horseman represents 10 knights (or less). Press the Control Pad up or down, then press the A Button to change tactics. The tactics displayed at bottom right of the screen are:

## GOOD KNIGHTS

You'll command the role of one of these Saxon lords. Note their strengths and make sure you have the skills to compensate for any of their weaknesses.

During the conquest you can increase your leadership rating by successfully jousting for fame. This is important to remember, since a strong leadership rating offers an enormous advantage on the battlefield. Of course, also know that any time you flee from a confrontation, your leadership will falter and your men will lose confidence.



### Wilfred of Ivanhoe

Leadership: Average  
Jousting: Good  
Swordplay: Good

### Wolfric the Wild

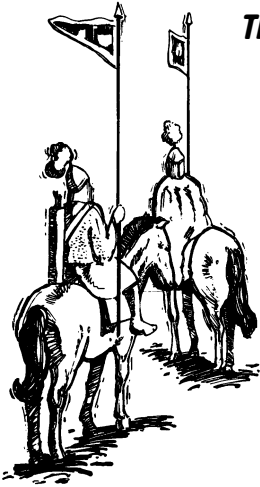
Leadership: Weak  
Jousting: Strong  
Swordplay: Weak

### Cedric of Rotherwood

Leadership: Strong  
Jousting: Average  
Swordplay: Good

### Geoffrey Longsword

Leadership: Good  
Jousting: Weak  
Swordplay: Strong



## THE TOURNAMENT OF CHAMPIONS

You need 5 gold pieces to pay for holding a tournament. When other lords hold tournaments, the code of chivalry requires you to attend (for free). Compete for FAME to increase your leadership, and for LAND to win territory. If you have no land other than your home castle to gamble, you'll automatically duel for fame.

**Event 1: The Joust** After choosing your opponent (Hint: you should have read the map to know who the strong and weak opponents are), press the A Button until you've advanced to the overhead view of the horses galloping into position. You're Saxon blue, the computer is Norman red.

Next, the "Charge!" screen will appear. Using the Control Pad, guide the lance at the bottom of the screen and try to position it in the center of the oncoming opponent's shield. The stronger your jousting ability, the larger his shield.

After the third pass, if you haven't dismounted him, you're automatically knocked on your tail. Whether you dismount your opponent or he dismounts you determines your strength going into the tournament's second event.

Be warned. Spearing the opponent's horse is the most dishonorable deed a chivalrous knight can commit. Do so, and your honor, along with most worldly possessions, will be lost.

**Event 2: The Morning Star** Again, you control the blue knight, the computer controls the red. The key is to time your blows, pressing the A Button at the exact moment the morning star is furthest from the opponent. Push the A Button alone and you'll swing high. Press it while holding the Control Pad down and you'll swing low. You can also defend yourself by raising the shield with the B Button.

To be proclaimed champion of the tournament, you must win three straight Morning Star events.

## BUYING AN ARMY (The Pre-Pentagon Era)

Select BUY ARMY from the main menu, and the screen automatically switches to a choice variety of soldiers, knights, catapults and castles available for purchase. You can shop to your heart's content, or at least until you run out of gold. (Absolutely no deficit spending allowed!)

Things to consider when buying your army: Knights outlast soldiers and are the striking force on the field of honor, but they are useless when defending your castle or garrisons. You must have at least one (1) catapult to lay siege to an enemy castle. You must also have land (besides your home territory) to build a castle/garrison. When you build a castle/garrison, you'll also receive 10 men to defend it.

## CONQUESTS

The location of your army is represented on the map by the mounted knight. When at home, the army helps defend the castle. To transfer forces back and forth between your home castle, your conquering army, and the garrisons you've built on captured territories, select CONQUEST from the main menu.

From the next menu that will appear, select TRANSFER. Press the A Button to lock onto the soldiers, knights or catapults you wish to transfer, then press the Control Pad left or right.

Finally, select MOVE ARMY to capture unguarded territories, attack enemy locations or to move through friendly lands.

